



Technical Details:

100% Polyester

Dimensions:

26" x 33"/

66cm x84cm

220-240V a.c.

50Hz

130W

Caution:

HANDLE WITH CARE. ALWAYS LAY FLAT OR FOLD. CRUSHING OR CRIMPING OF THE HEATING WIRES AN LEAD TO PREMATURE FAILURE.

Danger:

To reduce the risk of burns, electric shock and fire, this product must be used in accordance with the following instructions.

- Read all instructions.
- Do not use while sleeping.
- Do not use on an infant.
- This pad is not to be used on or by an invalid, sleeping or unconscious person, or a person with poor blood circulation unless carefully attended.
- Do not use on areas of insensitive skin.
- Burns can occur regardless of control setting, check skin under pad frequently.
- Never use pad without cover in place.
- Do not use pins or other metallic means to fasten this pad in place.
- Do not sit on or crush pad – avoid sharp folds.
- Never pull this pad by the supply cord.
- Do not use the cord as a handle.
- Carefully examine inner cover before each use. Discard the pad if inner covering shows any sign of deterioration.
- Loop cord loosely when storing, tight wrapping may damage cord and internal parts.

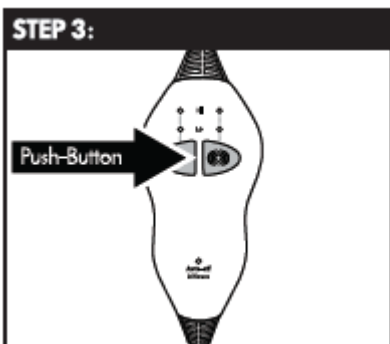
User instruction here



Plug the Relief Wrap into a mains socket.

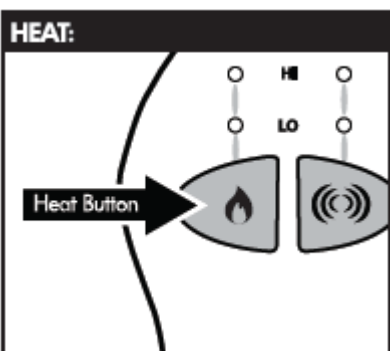


Place the Relief Wrap on body as shown to button up.

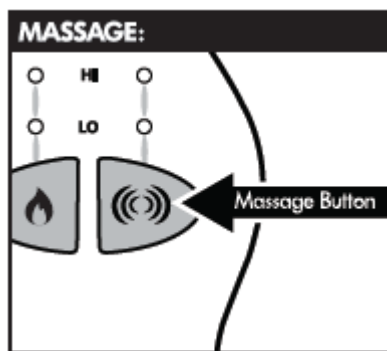


To turn on the Relief wrap, select the desired heat or massage function

IMPORTANT: If the Heat Indicators **DO NOT** light up or stay on, unplug from electrical outlet.



To apply Heat, press the Heat Activation Button and select your desired temperature: Hi or Lo.
Press 1x for Lo Heat
Press 2x for Hi Heat
Press again for OFF



To activate the Massage feature, press the Massage Activation Button and select your desired speed:
Press 1x for Lo Steady
Press 2x for Lo Pulse
Press 3x for Hi Steady
Press 4x for Hi Pulse



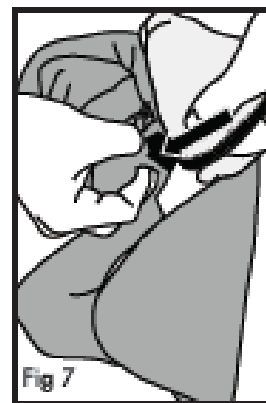
The Auto-Off Feature is included in the Control on the Relief Wrap. The Auto-Off allows for the Relief Wrap to conserve energy by turning off after 2 continuous hours of use. The Massage feature will automatically shut off after 15 minutes of use.

IMPORTANT: The Auto-timer will reset after a power cut.

Washing Instructions:

**NOTE: ONLY COVER IS WASHABLE! DO NOT WASH HEATING PAD! DO NOT DRY CLEAN!
DO NOT USE BLEACH. DO NOT WRING.**

1. Unzip the cover on the side and unfasten the inner straps which connect the heating pad to the cover.
2. Machine wash cover in warm water on gentle cycle, tumble dry on medium heat, remove quickly from dryer.
3. Relief Wrap can be hand washed in warm, soapy water. Hang to dry.
4. When dry, place the heating pad back inside the cover and re-fasten the straps zip closed when done.



Caution:

Handle with care. Always lay flat or fold. Crushing or crimping the heating wires can lead to premature failure.

WARNINGS AND SAFETY INSTRUCTIONS:

WHEN USING ELECTRICAL APPLIANCES, BASIC SAFETY PRECAUTIONS SHOULD ALWAYS BE FOLLOWED:

- FOR DOMESTIC INDOOR USE ONLY.
- DO NOT USE OUTDOORS OR FOR COMMERCIAL USE.
- BEFORE USE, CHECK THOROUGHLY FOR ANY DEFECTS AND DO NOT USE IF DEFECTS ARE FOUND. TAKE CARE NOT TO DROP THE APPLIANCE AS HEAVY IMPACTS MAY CAUSE INTERNAL DAMAGE.
- BEFORE CONNECTING THE APPLIANCE, CHECK IF THE VOLTAGE INDICATED ON THE BOTTOM OF THE APPLIANCE IS IN ACCORDANCE WITH THE MAINS VOLTAGE IN YOUR HOME.
- CHECK THE APPLIANCE AND POWER CABLE CAREFULLY FOR DAMAGE BEFORE EACH USE.
- THIS APPLIANCE CAN BE USED BY CHILDREN AGED FROM 8 YEARS AND ABOVE AND PERSONS WITH REDUCED PHYSICAL, SENSORY OR MENTAL CAPABILITIES OR LACK OF EXPERIENCE AND KNOWLEDGE IF THEY HAVE BEEN GIVEN SUPERVISION OR INSTRUCTION CONCERNING USE OF THE APPLIANCE IN A SAFE WAY AND UNDERSTAND THE HAZARDS INVOLVED. CHILDREN SHALL NOT PLAY WITH THE APPLIANCE. CLEANING AND USER MAINTENANCE SHALL NOT BE MADE BY CHILDREN WITHOUT SUPERVISION.
- CHILDREN OF LESS THAN 3 YEARS SHOULD BE KEPT AWAY UNLESS CONTINUOUSLY SUPERVISED.

Head Office, 11 Bridge Street,
Bishop's Stortford CM23 2JU
Tel: 0844 482 4400*
Fax: 01279 756 595

www.coopersofstortford.co.uk

Coopers
OF STORTFORD

*Calls cost 7 pence per minute plus your
telephone company's network access charge

- **SOME PARTS OF THIS PRODUCT CAN BECOME VERY HOT AND CAUSE BURNS. PARTICULAR ATTENTION HAS TO BE GIVEN WHERE CHILDREN AND VULNERABLE PEOPLE ARE PRESENT.**
- THE USE OF ANY ACCESSORY ATTACHMENTS NOT RECOMMENDED BY COOPERS OF STORTFORD MAY CAUSE INJURIES AND INVALIDATE ANY WARRANTY YOU MAY HAVE.
- DO NOT LET THE POWER CABLE HANG OVER THE EDGE OF A TABLE OR COUNTER, OR TOUCH HOT SURFACES.
- DO NOT PLACE ON OR NEAR HEAT SOURCES.
- DO NOT USE THIS APPLIANCE FOR ANY OTHER USE THAN THE INTENDED USE IT IS DESIGNED FOR.
- ENSURE THERE IS SUFFICIENT DISTANCE BETWEEN THIS APPLIANCE AND OTHER ITEMS ON THE WORK SURFACE OR WORK STATION, OR SUFFICIENT DISTANCE BETWEEN THE APPLIANCE AND THE CONFINES OF THE AREA IN WHICH IT IS SITUATED. WE RECOMMEND A MINIMUM CLEARANCE AROUND ALL FACES OF AT LEAST 10CM.
- ALLOW THE ITEM TO COOL THOROUGHLY BEFORE PUTTING ON OR TAKING OFF PARTS.
- KEEP ITEM AT LEAST 1M AWAY FROM COMBUSTIBLE MATERIAL SUCH AS FURNITURE, CUSHIONS, BEDDING, PAPER, CLOTHES, CURTAINS ETC.
- TO PROTECT AGAINST ELECTRIC SHOCK, DO NOT IMMERSE POWER CABLE, PLUG OR APPLIANCE, IN WATER OR ANY OTHER LIQUID.
- UNPLUG FROM OUTLET WHEN NOT IN USE AND BEFORE CLEANING.
- DO NOT OPERATE ANY APPLIANCE WITH A DAMAGED POWER CABLE OR PLUG OR AFTER THE APPLIANCE MALFUNCTIONS, OR HAS BEEN DAMAGED IN ANY MANNER. WE RECOMMEND THAT THE POWER CABLE IS NOT KINKED OR STORED IN A TWISTED MANNER, AND THAT YOU REGULARLY CHECK ITS CONDITION.
- ANY REPAIRS MUST BE CONDUCTED BY A QUALIFIED ELECTRICIAN OR ELECTRICAL SERVICE AGENT.

PLUG WIRING (UK & IRELAND)

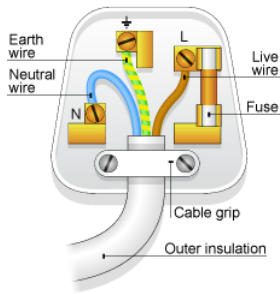
This appliance is fitted with a BS 1363 **13-amp** plug. If you have to replace the fuse, only those that are ASTA or BSI approved to BS1362 and with a rated current of **13-amps** should be used. If there is a fuse cover fitted, this cover must be re-fitted after changing the fuse. If the fuse cover is lost or damaged the plug must not be used. Spare fuse holders and fuses are available from electrical outlets. If the socket outlets in your home or office are not suitable for this product's plug, the plug must be removed and disposed of safely. Attempts to insert the plug into the wrong socket is likely to cause electric hazard. A replacement plug should be wired according to the following instructions:

The cable

A mains electricity cable contains two or three inner wires. Each has a core of copper and an outer layer of flexible plastic. This product is double insulated; the wires in the plug are colour coded in the following way:

BLUE	NEUTRAL
BROWN	LIVE
GREEN & YELLOW	EARTH

The diagram below shows the key features of a correctly wired three-pin mains plug.



Note:

Double insulated appliances do not need the green & yellow Earth wire. They may only have the Brown and Blue wires.

DISPOSAL

- Dispose of all packaging, paper, cartons and plastic, plastic bags in accordance with your local recycling regulations.
- At the end of the product's lifespan please dispose of it at an authorised household WEEE waste recycling centre.

