

## Specification

Voltage	230V A.C., 50/60Hz
Power	1200W
Guaranteed Sound power level	96 dB(A)
Sound pressure level	LpA =85 dB(A), K=2.5 dB(A)
Sound power level	LwA= 94 dB(A), K=0.8 dB (A)
Maximum vibration	2.3 m/s <sup>2</sup> , K=1.5 m/s <sup>2</sup>
Width of cut	330mm
Height of cut	20/40/60mm
No-load speed	3400/min
Degree of protection	IPX4
Grassbox capacity	30L
Weight	7.9kg
Mains cord length	10m

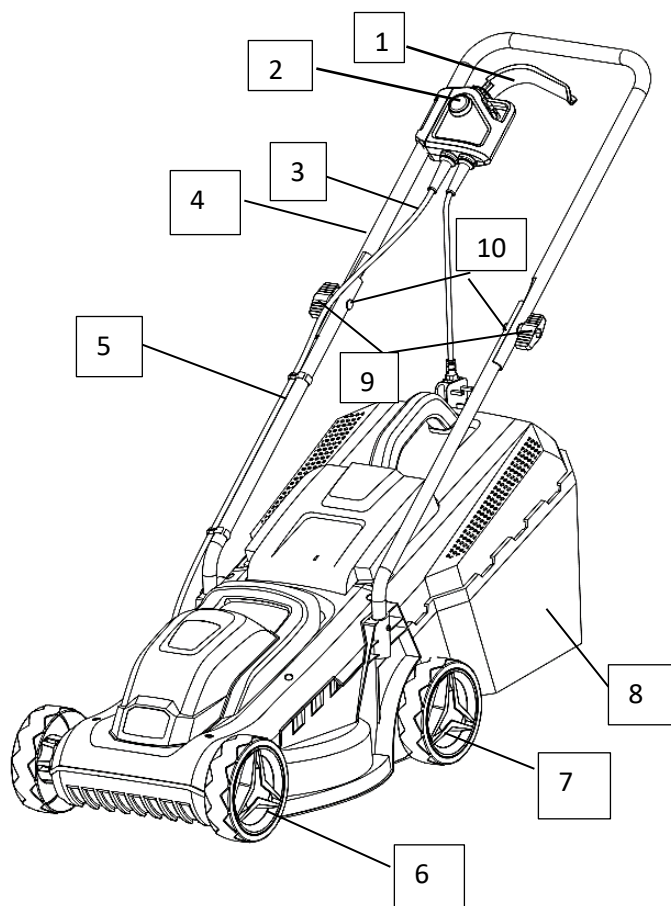
Head Office, 11 Bridge Street,  
Bishop's Stortford CM23 2JU  
Tel: 0844 482 4400\*  
Fax: 01279 756 595

[www.coopersofstortford.co.uk](http://www.coopersofstortford.co.uk)

**Coopers**  
OF STORTFORD

\*Calls cost 7 pence per minute plus your  
telephone company's network access charge

## Parts Description



1. Switch box handle
2. Start button
3. Motor control cable
4. Upper handle
5. Lower handle
6. Front wheel
7. Rear wheel
8. Grass box
9. Securing knob
10. Nuts

(not shown in this illustration:)

11. Grass box handle – see Fig. 3
12. Slots } see Fig. 4
13. Rear door } see Fig. 4
14. Rear discharge opening } see Fig. 4
15. Door rod } see Fig. 4
16. Hooks
17. Cord retainer
18. Blade
19. Blade nut
20. Washer – see Fig. 2
21. Front axle } see Fig. 5
22. Rear axle } see Fig. 5
23. Block of wood (not included) }
24. Wrench (not included) } Fig. 10
25. Spacer }

## KNOW YOUR LAWN MOWER

The safe use of the product requires an understanding of the information on the tool and in this operator's manual as well as a knowledge of the project you are attempting.

Before use of this product, familiarize yourself with all operating features and safety rules.

## GRASS BOX

The grass box collects grass clippings and prevents them from being discharged across your lawn as you mow.

## HEIGHT ADJUSTMENT

The height adjustment provides cutting height adjustments.

## MOTOR CONTROL CABLE

The motor control cable, located on the upper handle of the mower, engages and disengages the motor and blade.

## Assembly

### UNPACKING

This product requires assembly.

Carefully remove the product and any accessories from the box. Make sure that all items listed in the packing list are included.



### Warning

Do not use this product if any parts on the packing list are already assembled to your product when you unpack it.

Parts on this list are not assembled to the product by the manufacturer and require customer installation. Use of a product that may have been improperly assembled could result in serious personal injury.

- Inspect the product carefully to make sure no breakage or damage occurred during shipping.
- Do not discard the packing material until you have carefully inspected and satisfactorily operated the product.
- If any parts are damaged or missing, please call our customer service centre for assistance.

### Packing List

- Lawn mower
- Grass box
- Operator's manual



### Warning

If any parts are damaged or missing do not operate this product until the parts are replaced. Using a product with damaged or missing parts could result in serious personal injury.



### Warning

Do not attempt to modify this product or create accessories not recommended for use with this product. Any such alteration or modification is misuse and could result in a hazardous condition leading to possible serious personal injury.



### Warning

To prevent accidental starting that could cause serious personal injury, always disconnect from the power supply when assembling parts.



### Warning

Never operate the mower without the proper safety devices in place and working. Never operate the mower with damaged safety devices. Operation of this product with damaged or missing parts could result in serious personal injury.

Head Office, 11 Bridge Street,  
Bishop's Stortford CM23 2JU  
Tel: 0844 482 4400\*  
Fax: 01279 756 595

[www.coopersofstortford.co.uk](http://www.coopersofstortford.co.uk)

**Coopers**  
OF STORTFORD

\*Calls cost 7 pence per minute plus your  
telephone company's network access charge

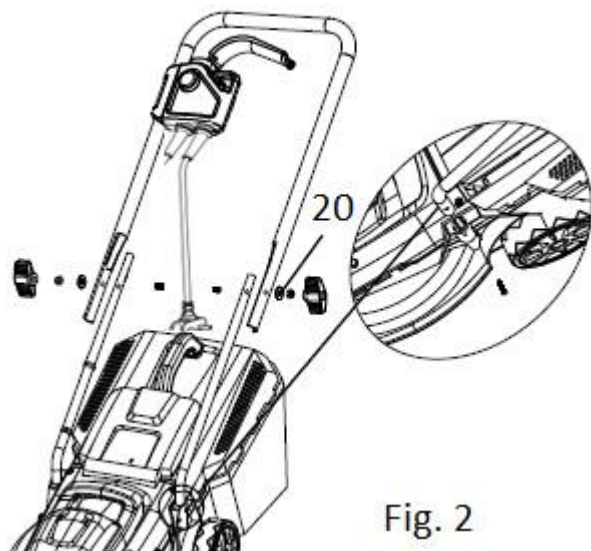


Fig. 2

## UNFOLDING AND ADJUSTING HANDLE

(Fig. 2)

- Insert the lower handle bars to the holes on base and align the mounting holes; Secure the lower handle bars with the screws.
- Align the mounting holes on the upper handle and the lower handle. Insert the carriage bolts and use a washer and the wing nut as shown to tighten them. Repeat the operation on the other side.
- Make certain the handles snap into place securely.

## Grass box assembly

Part 8

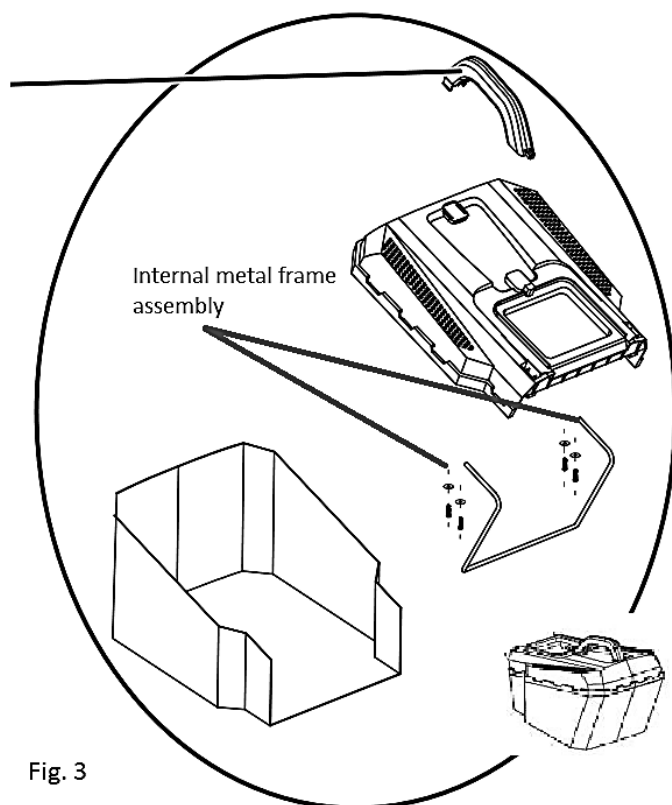


Fig. 3

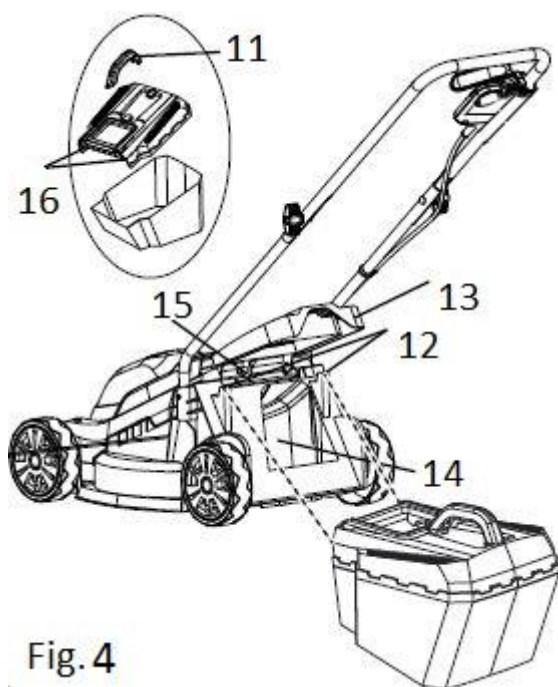


Fig. 4

- Lift the grass box by its handle and place under the rear door, so that the hooks on the grass box frame are seated into the slots in the handle bracket.
- Release the rear door. When installed correctly, the hooks on the grass box will rest securely in the slots on the handle brackets.

- 11. Grass box handle
- 12. Slots
- 13. Rear door
- 14. Rear discharge opening
- 15. Door rod
- 16. Hooks

## INSTALLING THE GRASSBOX

### See Figure 4

- Insert four screws into the washers to fix the bracket in the four separate holes, and then snap the bracket into the groove of the grass box
- Insert the latch of the handle into the grass box and push down to interlock
- Lift the rear discharge door.

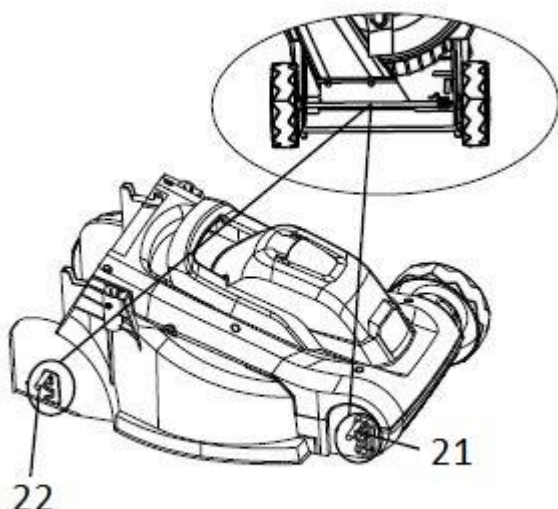


Fig. 5

- 21. Front axle
- 22. Rear axle

## SETTING BLADE HEIGHT

### (See Figure 5)

When shipped, the wheels on the mower are set to a low cutting position. Before using the mower for the first time adjust the cutting position to the height best suited for your lawn. The average lawn should be between 38 mm and 51mm during cool months and between 51 mm and 70mm during hot months.

### To adjust the blade height

- Release the on/off switch and disconnect the product from the power supply before adjusting the cutting height.



- Turn the product over to access the front and rear cutting height adjustment
- Push the axle forward to unlock the cutting height adjustment.
- Move the axle to required height and let it lock in place. Make sure both sides of the axle are on the same height.
- Ensure the four wheels are assembled on the same cutting height level and scroll smoothly and unobstructed.



## Warning

Do not allow familiarity with products to make you careless. Remember that a careless fraction of a second is sufficient to inflict serious injury.



## Warning

Always wear eye protection. Failure to do so could result in objects being thrown into your eyes resulting in possible serious injury.



## Warning

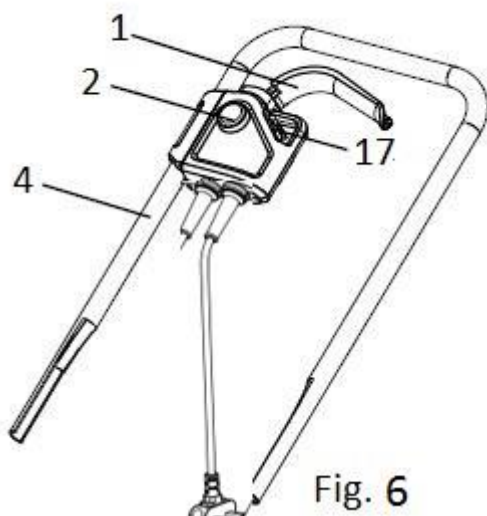
Do not use any attachments or accessories not recommended by the manufacturer of this product. The use of attachments or accessories not recommended can result in serious personal injury.



## Warning

Always inspect mower for missing or damaged parts and blade for damage, uneven, or excessive wear prior to use. Using a product with damaged or missing parts could result in serious personal injury.

- Do not tilt the lawn mower when starting the engine or switching on the motor, unless the lawn mower has to be tilted for starting. In this case, do not tilt it more than absolutely necessary and lift only the part which is away from the operator.
- Do not start the engine when standing in front of the discharge chute.
- Do not put hands or feet near or under rotating parts. Always keep clear of the discharge opening.



## STARTING/STOPPING THE MOWER

See Figure 6

To start the motor:

- Plug the mower into an approved outdoor extension cord.
- Press and hold the start button.
- Pull the switch box handle upward to the handle to start the mower and release the button.

To stop the motor:

- Release the switch box handle.

## MOWING TIPS

- Make sure the lawn is clear of stones, sticks, wires and other objects that could damage the lawn mower blade or motor. Do not mow over property stakes or other metal posts. Such objects could be accidentally thrown by the mower in any direction and cause serious personal injury to the operator and others.
- For a healthy lawn, always cut off one-third or less of the total length of the grass.
- Do not cut wet grass, it will stick to the underside of the deck and prevent proper bagging or mulching of grass clippings.
- New or thick grass may require a narrower cut or a higher cutting height.
- Clean the underside of the mower deck after each use to remove grass clippings, leaves, dirt, and any other accumulated debris. Disconnect from power before any cleaning.
- When cutting long grass, reduce walking speed to allow for more effective cutting and a proper discharge of the clippings.

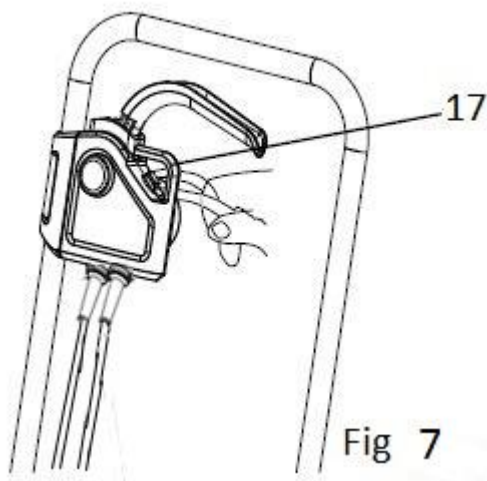
**NOTE:** Always stop mower, allow blade to completely stop, and remove the isolator key before cleaning underneath the mower.

Head Office, 11 Bridge Street,  
Bishop's Stortford CM23 2JU  
Tel: 0844 482 4400\*  
Fax: 01279 756 595

[www.coopersofstortford.co.uk](http://www.coopersofstortford.co.uk)

**Coopers**  
OF STORTFORD

\*Calls cost 7 pence per minute plus your  
telephone company's network access charge

**USING THE CORD RETAINER****(see Figure 7)**

This lawn mower is equipped with a cord retainer in order to prevent the extension cord from disconnecting from the power cord while the mower is in use. The cord retainer hangs from the cord guide bar.

**NOTE:** Do not plug the extension cord into the outlet until it has been connected to the cord retainer and plugged into the mower.

To use the cord retainer:

- Fold the extension cord in order to forming a tight loop near the retainer.
- Push the loop through the bottom hole in the retainer.
- Slide the loop over the retaining clip, and pull down until the cord is secured.

**SLOPE OPERATION****Warning**

Slopes are a major factor related to slip and fall accidents that can result in severe injury. Operation on slopes requires extra caution. If you feel uneasy on a slope, do not mow it. For your safety, do not attempt to mow slopes greater than 15 degrees.

- Mow across the face of slopes, never up and down.
- Exercise extreme caution when changing direction on slopes.
- Watch for holes, ruts, rocks, hidden objects, or bumps which can cause you to slip or trip. Tall grass can hide obstacles. Remove all objects such as rocks, tree limbs, etc., which could be tripped over or thrown by the blade.
- Always be sure of your footing. A slip and fall can cause serious personal injury. If you feel you are losing your balance, release the power lever immediately.
- Do not mow near drop-offs, ditches, or embankments; you could lose your footing or balance.



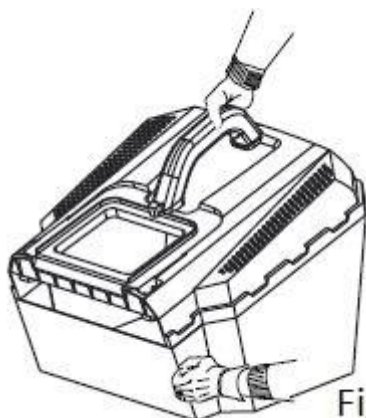


Fig. 8

**EMPTYING THE GRASSBOX****(see Figure 8)**

- Stop mower, allow blade to completely stop.
- Lift the rear door.
- Lift the grass box by its handle to remove from mower.
- Empty grass clippings.
- Lift the rear door and reinstall the grass box as described earlier in this manual.

**Maintenance****Warning**

When servicing, use only authorised replacement parts.

Use of any other parts may create a hazard or cause product damage.

**GENERAL MAINTENANCE**

Before each use, inspect the entire product for damaged, missing, or loose parts such as screws, nuts, bolts, caps etc.

Tighten securely all fasteners and caps and do not operate this product until all missing or damaged parts are replaced. Please call Customer Services for assistance. Avoid using solvents when cleaning plastic parts. Most plastics are susceptible to damage from various types of commercial solvents and may be damaged by their use. Use clean cloths to remove dirt, dust, oil, grease, etc.

**Warning**

Do not at any time let brake fluids, gasoline, petroleum based products, penetrating oils, etc., come in contact with plastic parts. Chemicals can damage, weaken, or destroy plastic which may result in serious personal injury.

Periodically check all nuts and bolts for proper tightness to ensure safe operation of the mower.

Wipe the mower clean with a dry cloth occasionally. Do not use water.

**LUBRICATION**

All of the bearings in this product are lubricated with a sufficient amount of high grade lubricant for the life of the unit under normal operating conditions. Therefore, no further bearing lubrication is required.

Head Office, 11 Bridge Street,  
Bishop's Stortford CM23 2JU  
Tel: 0844 482 4400\*  
Fax: 01279 756 595

[www.coopersofstortford.co.uk](http://www.coopersofstortford.co.uk)

**Coopers**  
OF STORTFORD

\*Calls cost 7 pence per minute plus your  
telephone company's network access charge



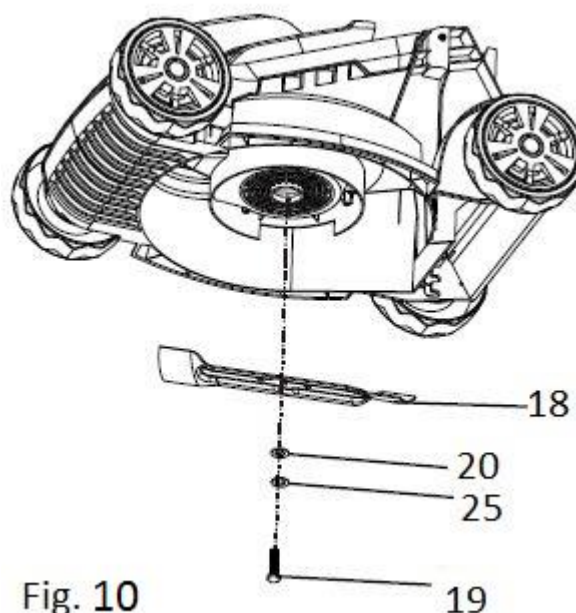
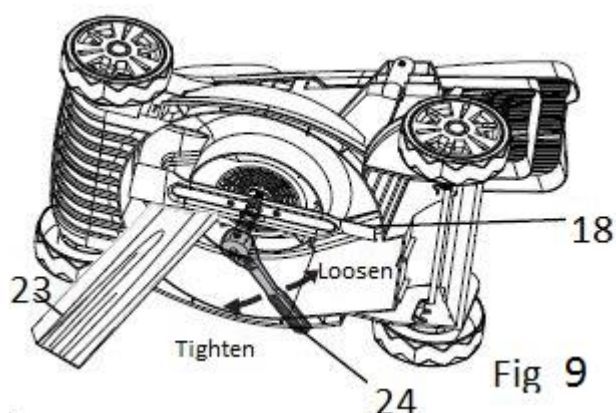
## Warning

Always protect hands by wearing heavy gloves and/or wrapping the cutting edges of the blade with rags and other material when performing blade maintenance. Contact with the blade could result in serious personal injury.



## Warning

Do not lubricate any of the wheel components. Lubrication may cause the wheel components to fail during use, which could result in serious personal injury to the operator and/or mower or property damage.



## REPLACING THE CUTTING BLADE

(See figure 9-10)

**NOTE:** Only use authorised replacement blades. Replace worn or damaged blades and bolts in sets to preserve balance.

- Stop the motor. Allow blade to come to a complete stop. Turn power off.
- Turn the mower on its side.
- Wedge an obstruction (23) between the blade and mower deck to prevent the blade from turning.
- Loosen the blade nut by turning it counter-clockwise (as viewed from bottom of mower) using a 15 mm wrench (24) or socket (not provided).
- Remove the blade nut, spacer, washer, and blade.
- Make certain the blade holder is pushed completely against the motor shaft.
- Place the new blade on the shaft. Ensure blade is properly seated with shaft going through centre blade hole and the two blade posts inserted into their respective holes on the blade. Make sure it is installed with the curved ends pointing up toward the mower deck and not down toward the ground. When seated properly, the blade should be flat against the blade holder.
- Replace the blade insulator and spacer, then thread the blade nut on the shaft and finger tighten.

**NOTE:** Make certain all parts are replaced in the exact order in which they were removed.

Torque the blade nut down clockwise using a torque wrench (not provided) to ensure the bolt is properly tightened. The recommended torque for the blade nut is 62.5~71.5 kgfcm (350-400 in.-lb.).

### Troubleshooting

Problem	Possible Cause	Solution
Motor refuses to start	Power turned off	Turn power on
	Mains socket faulty	Use another socket
	Extension cable damaged	Inspect cable, replace if damaged
	Fuse faulty/blown	Replace fuse
	Grass too long	Increase height of cut and tilt mower to reduce starting load
	Motor protector activated	Allow motor to cool and increase height of cut
Mower functions intermittently	Extension cable damaged	Inspect cable, replace if damaged
	Internal wiring of mower damaged	Contact customer services
	Motor protector has activated	Allow motor to cool and increase height of cut
Mower leaves ragged finish and/or motor labours failure	Height of cut too low	Increase height of cut
	Cutting blade blunt	Replace the blade
	Possible clogging	Check underneath the mower and clear out as necessary (always turn off and unplug mower and wear gardening gloves)
	Blade fitted upside down	Refit blade correctly
Blade not rotating while mower switched on	Cutting blade obstructed	Switch off mower and unplug. Clear obstruction (always wear gardening gloves)
	Blade nut/bolt loose	Tighten blade nut/bolt
Excessive vibration/noise	Blade nut/bolt loose	Tighten blade nut/bolt
	Cutting blade damaged	Replace the blade

If these solutions do not solve the problem contact your authorised service dealer.

### PLUG WIRING (UK & IRELAND)

This appliance is fitted with a moulded BS 1363 13-amp plug. If you have to replace the fuse, only those that are ASTA or BSI approved to BS1362 and with a rated current of 13-amps should be used.

If there is a fuse cover fitted, this cover must be re-fitted after changing the fuse. If the fuse cover is lost or damaged the plug must not be used. Spare fuse holders and fuses are available from electrical outlets. If the socket outlets in your home or office are not suitable for this product's plug, the plug must be removed and disposed of safely. Attempts to insert the plug into the wrong socket is likely to cause electric hazard.

Head Office, 11 Bridge Street,  
Bishop's Stortford CM23 2JU  
Tel: 0844 482 4400\*  
Fax: 01279 756 595

[www.coopersofstortford.co.uk](http://www.coopersofstortford.co.uk)

\*Calls cost 7 pence per minute plus your  
telephone company's network access charge

**Coopers**  
OF STORTFORD

## DISPOSAL

- Dispose of all packaging, paper, cartons, plastic and plastic bags in accordance with your local recycling regulations.
- At the end of the product's lifespan please dispose of it at an authorised household WEEE waste recycling centre.

## DECLARATION OF CONFORMITY

Coopers of Stortford that the Compact Lawn Mower G287, (Model No. YJ-3312-1)

Conforms to the following European Directives and standards

Is in conformity with the relevant provisions of the Machinery Directive 2006/42/EC

Is in conformity with the provisions of the following other EC-Directives

- 2014/30/EU (EMC-Directive), and
- 2000/14/EC (Noise-Directive) incl. (2005/88/EC)

And furthermore, we declare that

the following (parts/clauses of) European harmonised standards have been used

Guaranteed Sound power level	96 dB(A)
Sound pressure level	LpA =85 dB(A), K=2.5 dB(A)
Sound power level	LwA= 94 dB(A), K=0.8 dB (A)
Maximum vibration	2.3 m/s <sup>2</sup> , K=1.5 m/s <sup>2</sup>

The Technical file in accordance with 2006/42/EC is available from:

Coopers of Stortford, 11 Bridge Street, Bishop's Stortford, Hertfordshire, CM23 2JU

