

GAINSBOROUGH
Garden & Wildlife



Dimensions

60cm x18cm x188cm (overall item)

Planter size: 40.5cm diameter/34cm high

Material

Plastic and Metal

Power Details

3 Solar Lamps each with super bright LED

Battery: 3x 1.2v AA 600mAh Ni-MH Battery (included)

Assembly

Place one section of the sectional pole into the planter base ensuring it is placed inside the support hole. Place the support ring over the pole and push firmly down into planter.

Attach decorative scroll to one section of support pole using screws provided. Insert lamp heads onto supports and install decorative top. Assemble remaining support pole and place lamps on top. Put the planter in a position that receives sun for most of the day. Now fill with soil and your favourite plants.



Fig. 1



Fig. 2

Before using first time

Allow lamp to charge for at least 8 hours in full sunlight with the ON/OFF switch in the ON position. The ON/OFF switch is located under the solar panel. Once the batteries are fully charged, set the ON/OFF switch to ON. If the lamp does not turn on after dark refer to Maintenance section.

Find an ideal Place for the Solar Light.

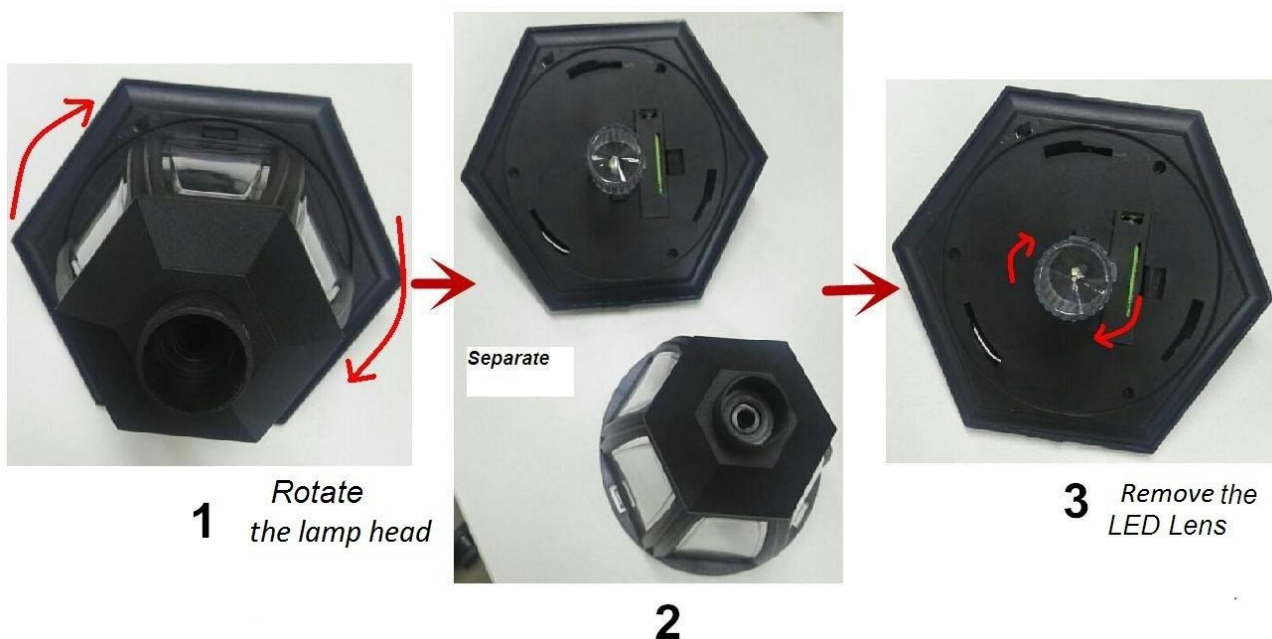
Place the solar light in an area where it will receive direct sunlight for at least 8 hours per day. The number of hours the light will illuminate is directly proportional to the hours of sunlight it receives. If the light is placed in a shaded area, it will not be able to fully charge and its illumination time will be limited. Do not place the light near other outdoor lighting like porch or streetlights. These may fool the sensor and keep the light from coming on, or cause it to turn off automatically

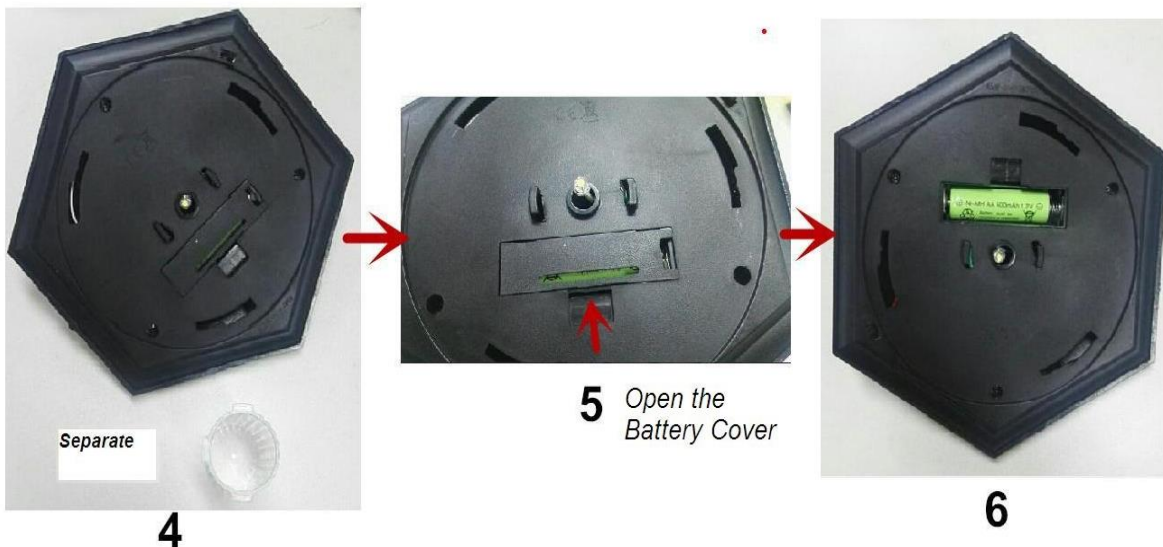
Maintenance

Clean the solar panels regularly with a damp towel to guarantee optimum performance. Do not use any type of solvent for cleaning and be careful not to put too much pressure on the solar panels while cleaning.

Trouble Shooting

If your charged solar light does not come on at dusk despite following all the instructions, please try the following steps: 1. Make sure that the solar lamp is not being affected by any other light source. 2. Ensure the solar lamp is not positioned in the shade during the day. 3. Make sure the switch on the lamp head is in the ON position. 4. Check that the batteries are installed correctly. NOTE: The performance of the solar lamp will vary with the time of year. It will deliver more light when it has had a full day in the sun rather than a day in overcast weather. WINTERTIME TIPS: For optimal performance, be sure to remove any snow or debris accumulation from solar panel(s). A solar panel free of debris will charge the batteries much more efficiently. WARNING: This is not a toy, please keep out of reach of children.

Replacing the battery




BATTERIES

- Keep batteries away from children and pets.
- Do not mix used and new batteries.
- Install batteries in accordance with its polarity symbols.
- Remove the batteries if left for long periods.
- Never dispose of batteries in a fire.
- Battery disposal, spent or expired batteries must be properly disposed of and recycled in compliance with local regulations. For detailed information, contact your local authority.
- Follow the battery manufacturer's safety, usage, and disposal instructions.

DISPOSAL

- Coopers of Stortford use recyclable or recycled packaging where possible.
- Please dispose of all packaging, paper, cartons, packaging in accordance with your local recycling regulations.
- Plastics, polybags – this is made from the following recyclable plastic.



Code & Symbol	 PP
Type of Plastic	Polypropylene
Commonly used for	Microwaveable food containers, yoghurt pots, butter tubs, disposable plates and cups
Notes	Commonly recycled and collected from household recycling bins (packaging tape itself not recyclable but does not interfere with cardboard)

- At the end of the product's lifespan please check with your local council authorised household waste recycling centre for disposal.

