

2 in 1 Solar Motion Spotlight

G362

Instructions for Use

Please read and retain these instructions for future reference

v002: 24/04/20



Dimensions

14.8cm x7.5cm x23.5cm including stake

14.8cm x7.5cm x14cm wall light only

Specification:

Lighting mode: PIR

Battery: 3.7V 13500 500mah Li-ion
battery included

2 white SMD LEDs - not replaceable

Detection distance: 3-5m

Activation time: 15-20sec

Composition

Plastic



The lights will look great scattered along your path or flowers beds, using the ground stake provided, to light the way at night or to illuminate your plants at night.

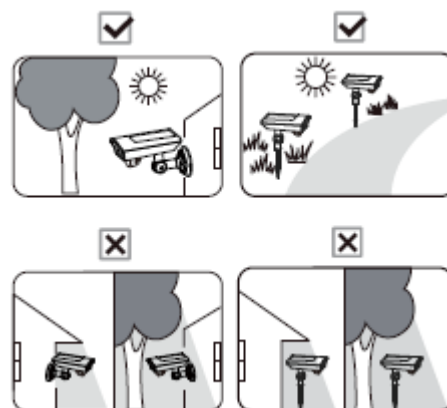
You can also wall mount it instead using the wall bracket and fixings provided, making it great for above your door, garage, shed etc.

It charges by day using the integral solar panel then will automatically light up at night up at 80 lumens, when motion is detected from up to 5 meters away it will brighten further up to 100 lumens.

After no motion is detected after around 20 seconds it will dull back down to 80 lumens.

How to use the Solar Light

- Prior to initial use, the solar unit should be exposed to sunlight for at least 8-12 hours to fully charge the battery.
- Push the switch to the ON position when charging for the first time.
- Find a location in direct sunlight and generally free from cover or shade.
- Moisten ground if too compact to prevent damage to the stake
- At night the oval LED solar lights will automatically turn on.
- Ideally align the solar panel to face the midday sun to maximize charging.
- **ALWAYS POSITION IN DIRECT SUNLIGHT**
- **For Domestic use only.**



How the solar sensor light works

During the day, the solar panel converts solar energy and stores it in the rechargeable battery. At night, using this stored energy, the light illuminates automatically for 15-20 seconds when the motion sensor detects movement. After 15-20 seconds if no further motion is detected, the light will automatically turn off. How bright the light illuminates, depends on its location, weather conditions and seasonal lighting availability. The motion sensor detects motion over an approx. a distance of around 3-5m.

Battery Replacement

The life of the rechargeable battery is approximately 6-12 months.

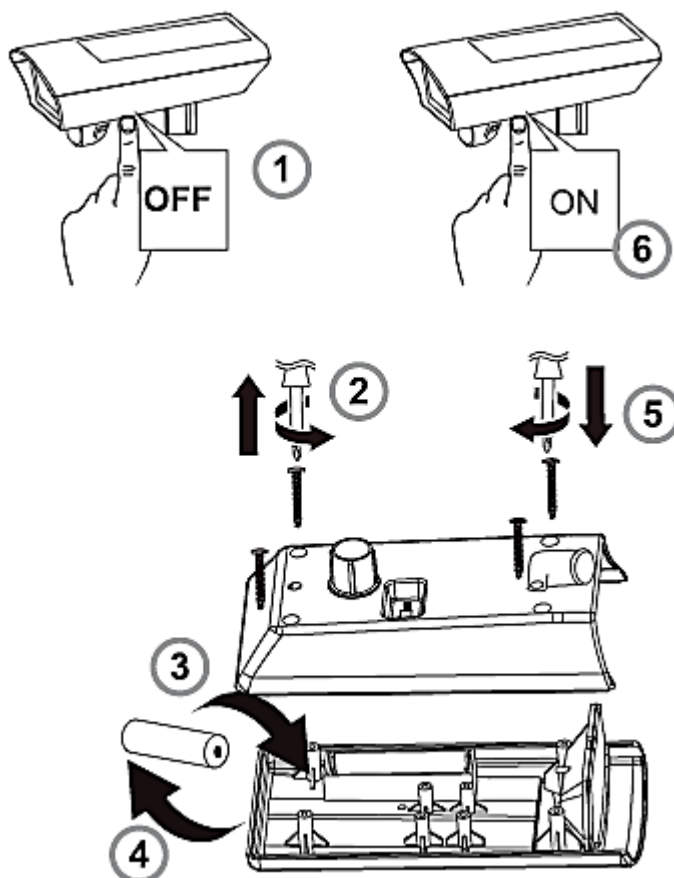
*Calls cost 7 pence per minute plus your telephone company's network access charge

Head Office, 11 Bridge Street,
Bishop's Stortford CM23 2JU
Tel: 0844 482 4400*
Fax: 01279 756 595
www.coopersofstortford.co.uk

Coopers
OF STORTFORD

When the light becomes dim or is no longer functional, it may be time to change the battery.

1. Push the switch to the "OFF" position
2. Using a screwdriver, remove the 4 screws
3. Keep the screws safe
4. Carefully lift off the top. Take out the battery, and replace with a new 1*3.7V 14500 500mah Li-ion rechargeable battery. Do not replace with a normal alkaline battery.
5. Using a screwdriver, cover the 4 screws.
6. Push the switch to the "ON" position



BATTERIES

- Do not mix used and new batteries.
- Install batteries in accordance with its polarity symbols.
- Remove the batteries if left for long periods.
- Never dispose of batteries in a fire.
- Keep batteries away from children and pets.
- Battery disposal, spent or expired batteries must be properly disposed of and recycled in compliance with local regulations. For detailed information, contact your local authority.
- Follow the battery manufacturer's safety, usage, and disposal instructions.

Cleaning

To maintain maximum illumination always keep the solar panel clean and free from dust and debris. If cleaning is required, please use a soft damp cloth or paper towel.

Never try to disassemble the solar light.

For long-term storage, charge the battery for 2-3 days before removing the battery pack and storing the light and battery in a cool, dry environment

TROUBLE SHOOTING:

If the solar light does not turn on automatically at night, please check the following;

Is the switch in the on position?

Battery is not fully charged: Ensure the solar panel is positioned where it will receive plenty of direct sunlight. This item should not be placed in shady areas or the battery will not charge and the light will not function properly.

Battery needs replacement: Replace the battery when the lights are no longer functional or are very dim during summer months.


Loose battery: Sometimes the battery may become dislodged from the terminals and no contact is made. Make sure the battery is firmly in contact the terminal at each end of the battery holder

Dirty Solar panel: A dirty solar panel will not allow the battery to fully charge. Clean the solar panel with a damp cloth or paper towel.

Light does not turn on: The light is designed to switch on when it turns dark, if there are strong light sources nearby then the lights may be dim or not turn on

DISPOSAL

- Dispose of all packaging, paper, cartons, plastic and plastic bags in accordance with your local recycling regulations.
- At the end of the product's lifespan please dispose of it at an authorised household WEEE waste recycling centre.

Code & Symbol	 OTHER
Type of Plastic	ABS
Commonly used for	CD's, crisp packets, various flexible packaging, baby bottles, sunglass lenses
Notes	Not often or widely recycled

