

**Dimensions:**

32cm high, 25cm wide and 20cm deep

**Material:**

Resin

Contains 1.2V 200mAh Ni-MH AA Rechargeable battery

LED lights not replaceable

**How the Solar Light Works**

The solar light will work automatically charge by day and illuminate at night.

Solar lights should be installed in an area that receive the most direct sunlight and is free from cover or shade to allow the solar lights to be charged as much as possible

**Positioning the Solar Light**

Locate outdoors in direct sunshine, where the solar panel can receive at least 6 hours of sunshine each day. Shady locations will influence the battery charge and may shorten the working time of the light at night time. The Solar Light should not be placed near external lighting such as street lights, which may affect the activation of the internal sensor once it becomes darker.

The solar light is ideal for night time lighting of garden decks, lawns, patios.

**CAUTION:** Install lights where they will not create a trip hazard or cause an obstruction

**How to use the Solar Light**

1. Prior to initial use, the solar unit should be exposed to sunlight for at least 8-12 hours to fully charge the battery.
2. Push the switch to the OFF position when charging for the first time.
3. Find a location in direct sunlight and generally free from cover or shade.  
Once sufficiently charged push the switch button to the ON position.
4. At night the solar light will automatically turn on.
5. Ideally align the solar panel to face the midday sun to maximize charging.

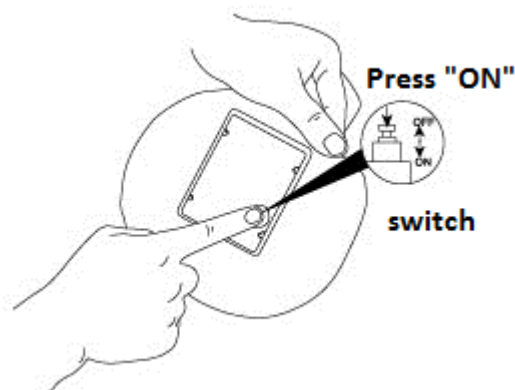


Fig. 1

**Cleaning**

To maintain maximum illumination always keep the solar panel clean and free from dust and debris. If cleaning is required, please use a soft damp cloth or paper towel.

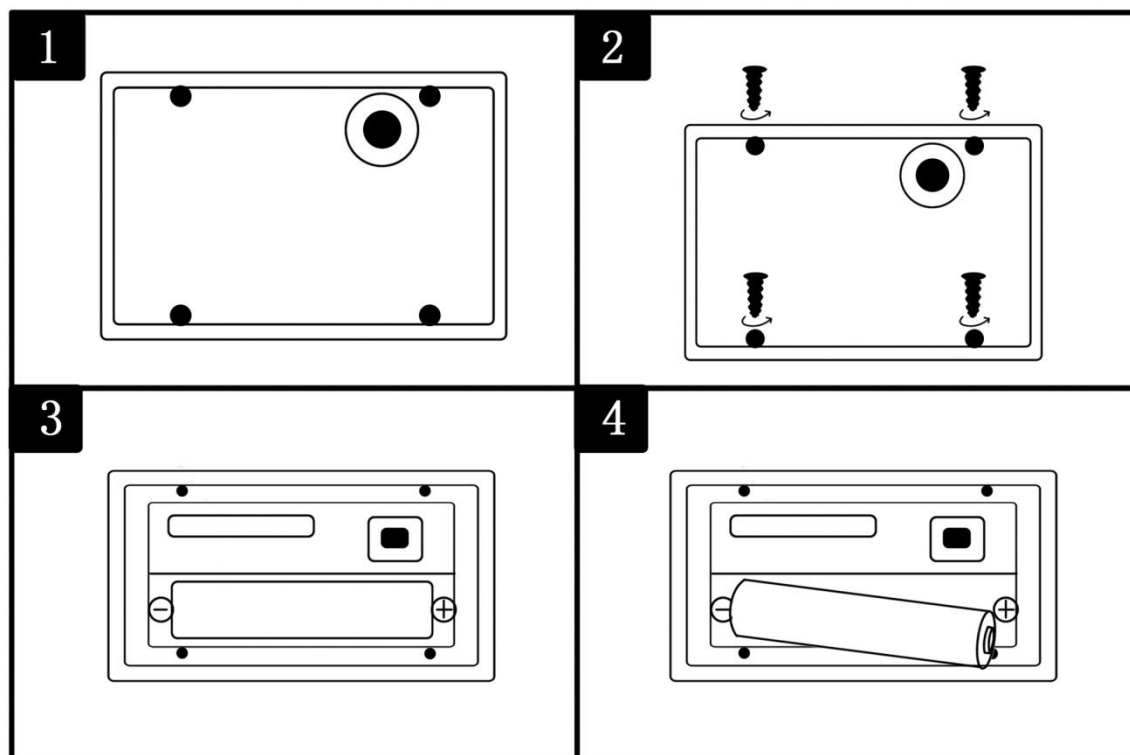
Never try to disassemble the solar light. The LED light is not replaceable.

For long-term storage, charge the battery for 2-3 days before removing the battery pack and storing the light and battery in a cool, dry environment

### Battery Replacement

The life of the rechargeable battery is approximately 6-12 months. When the light becomes dim or is no longer functional, it may be time to change the battery.

- Push the switch to the off position.
- Using a screwdriver, remove the 4 screws and take out the batteries replacing with a new 200 m AH Ni-MH 1.2V AA rechargeable battery.
- Do not replace with a normal alkaline battery.
- Do not disconnect or remove any wires or tamper with any other connections inside or around the compartment. See fig 2



- Replace the battery cover and screw into place.

### Trouble shooting

Head Office, 11 Bridge Street,  
Bishop's Stortford CM23 2JU  
Tel: 0844 482 4400\*  
Fax: 01279 756 595  
www.coopersofstortford.co.uk

**Coopers**  
OF STORTFORD

If the solar light does not turn on automatically at night, please check the following;

- Is the switch in the on position?
- Battery is not fully charged: Ensure the solar panel is positioned where it will receive plenty of direct sunlight. This item should not be placed in shady areas or the battery will not charge and the light will not function properly.
- Battery needs replacement: Replace the battery when the lights are no longer functional or are very dim during summer months.
- Loose battery: Sometimes the battery may become dislodged from the terminals and no contact is made. Make sure the battery is firmly in contact the terminal at each end of the battery holder
- Dirty Solar panel: A dirty solar panel will not allow the battery to fully charge. Clean the solar panel with a damp cloth or paper towel.
- Light does not turn on: The light is designed to switch on when it turns dark, if there are strong light sources nearby then the lights may be dim or not turn on



#### BATTERIES

- Keep batteries away from children and pets.
- Do not mix used and new batteries.
- Remove the batteries if left for long periods.
- Never dispose of batteries in a fire.
- Battery disposal, spent or expired batteries must be properly disposed of and recycled in compliance with local regulations. For detailed information, contact your local authority.
- Follow the battery manufacturer's safety, usage, and disposal instructions.

#### DISPOSAL

- Coopers of Stortford use recyclable or recycled packaging where possible.
- Please dispose of all packaging, paper, cartons, packaging in accordance with your local recycling regulations.
- Plastics, polybags – Contains the following recyclable plastic.



Code & Symbol	 PP	 PS
Type of Plastic	Polypropylene (bag, battery box)	Polystyrene (polyfoam)
Commonly used for	Microwaveable food containers, yoghurt pots, butter tubs, disposable plates and cups	Insulation boxes, water cups, protective packaging inserts, take away containers
Notes	Commonly recycled and collected from household recycling bins (packaging tape itself not recyclable but does not interfere with cardboard)	Not commonly recycled but waste management centres will recycle it.

- At the end of the product's lifespan please check with your local council authorised household waste recycling centre for disposal.

