

Open Toe Foot Heat Massager G609

Instructions for Use

Please read and retain these instructions for future reference

v001: 23/03/20



Technical details

Rated voltage: 12VDC, 2.5A

Rated power: 30W

DC 24V is not allowed



ASSEMBLY INSTRUCTIONS / INSTRUCTIONS FOR USE:

Unpack the components carefully. Please check all parts have been removed from the packaging.

SAFETY INSTRUCTIONS:

WHEN USING ELECTRICAL APPLIANCES, BASIC SAFETY PRECAUTIONS SHOULD ALWAYS BE FOLLOWED:

- READ ALL INSTRUCTIONS BEFORE USE.
- THE PRODUCT SHOULD NEVER BE LEFT UNATTENDED WHEN PLUGGED IN. UNPLUG FROM OUTLET WHEN IT IS NOT IN USE AND BEFORE PUTTING ON OR TAKING OFF PARTS.
- DO NOT OPERATE UNDER A BLANKET OR A PILLOW. EXCESSIVE HEATING CAN OCCUR AND CAUSE FIRE, ELECTRIC SHOCK OR INJURY TO PERSONS.
- NEVER OPERATE THE PRODUCT WITH THE AIR OPENINGS BLOCKED. KEEP THE AIR OPENINGS FREE OF LINT, HAIR, ETC.
- DO NOT DROP OR INSERT ANY OBJECTS INTO ANY OPENING.
- DO NOT USE OUTDOORS.
- DO NOT OPERATE WHERE AEROSOL (SPRAY) PRODUCTS ARE BEING USED OR WHERE OXYGEN IS ADMINISTERED.
- TO DISCONNECT, SWITCH OFF ALL CONTROLS AND REMOVE PLUG FROM SOCKET.
- THE APPLIANCES HAS A HEATED SURFACE. PERSONS INSENSITIVE TO HEAT MUST BE CAREFUL WHEN USING THE APPLIANCE.
- THE APPLIANCE IS ONLY TO BE USED WITH THE POWER SUPPLY UNIT PROVIDED WITH THE APPLIANCE.
- TO PROTECT AGAINST ELECTRIC SHOCK, DO NOT IMMERSE CORD, PLUG OR APPLIANCE, IN WATER OR ANY OTHER LIQUID.
- UNPLUG FROM OUTLET WHEN NOT IN USE AND BEFORE CLEANING.
- DO NOT OPERATE ANY APPLIANCE WITH A DAMAGED CORD OR PLUG OR AFTER THE APPLIANCE MALFUNCTIONS, OR HAS BEEN DAMAGED IN ANY MANNER. WE RECOMMEND THAT THE POWER CORD IS NOT KINKED OR STORED IN A TWISTED MANNER, AND THAT YOU REGULARLY CHECK ITS CONDITION.
- THE USE OF ANY ACCESSORY ATTACHMENTS NOT RECOMMENDED BY COOPERS OF STORTFORD MAY CAUSE INJURIES AND INVALIDATE ANY WARRANTY YOU MAY HAVE.
- DO NOT LET CORD HANG OVER THE EDGE OF A TABLE OR COUNTER, OR TOUCH HOT SURFACES.
- DO NOT PLACE ON OR NEAR HEAT SOURCES.
- USE ON A LEVEL, STABLE SURFACE.

*Calls cost 7 pence per minute plus your telephone company's network access charge

Head Office, 11 Bridge Street,
Bishop's Stortford CM23 2JU
Tel: 0844 482 4400*
Fax: 01279 756 595
www.coopersofstortford.co.uk

Coopers
OF STORTFORD

Open Toe Foot Heat Massager G609

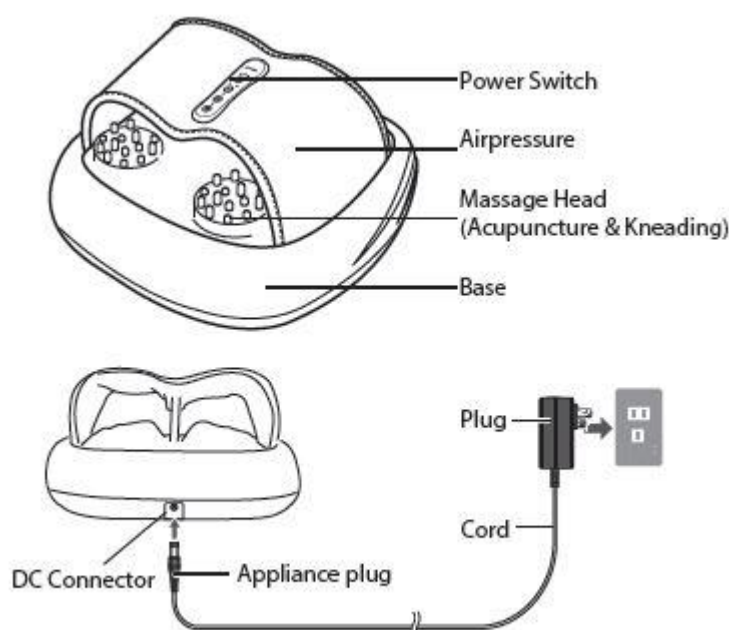
Instructions for Use

Please read and retain these instructions for future reference

v001: 23/03/20

- **DO NOT COVER THE ITEM IN ANY WAY WHEN IN USE AS THIS MAY CAUSE OVERHEATING.**
- **DO NOT USE THIS APPLIANCE FOR ANY OTHER USE THAN THE INTENDED USE IT IS DESIGNED FOR.**
- **ENSURE THERE IS SUFFICIENT DISTANCE BETWEEN THIS APPLIANCE AND OTHER ITEMS ON THE WORK SURFACE OR WORK STATION, OR SUFFICIENT DISTANCE BETWEEN THE APPLIANCE AND THE CONFINES OF THE AREA IN WHICH IT IS SITUATED. WE RECOMMEND A MINIMUM CLEARANCE AROUND ALL FACES OF AT LEAST 10CM.**
- **BEFORE USE, CHECK THOROUGHLY FOR ANY DEFECTS AND DO NOT USE IF DEFECTS ARE FOUND. TAKE CARE NOT TO DROP THE APPLIANCE AS HEAVY IMPACTS MAY CAUSE INTERNAL DAMAGE.**

Parts



How to operate

1. (Power ON/OFF): Press this button to switch power-on. All keys are operational. The automatic setting time is 15 mins. The Acupuncture and Air Pressure function turn on when power on, and the air-pressure of the feet is opened by default in low intensity, acupuncture & kneading speed default in low intensity. Acupuncture & kneading speed defaults to slow speed. Press this button again, the whole machine is shut down, and all massages are stopped and the system is in standby mode. After 15 minutes the massager stops massaging and enters standby state.
2. Speed: The default settings is slow speed when powered on, press the button to adjust the speed as you required. The speed switches every time you press the button, shown by 2 LED indicator lights, respectively indicating slow and fast speed.
3. Heating: The heating function will be started once the device is turned on (default mode). Press the heating button to turn off and press again to turn on.
4. Air pressure: The default is weak intensity on power-on state. Press the button to increase intensity level to medium, the corresponding light will turn on.

*Calls cost 7 pence per minute plus your telephone company's network access charge

Head Office, 11 Bridge Street,
Bishop's Stortford CM23 2JU
Tel: 0844 482 4400*
Fax: 01279 756 595
www.coopersofstortford.co.uk

Coopers
OF STORTFORD

Open Toe Foot Heat Massager G609

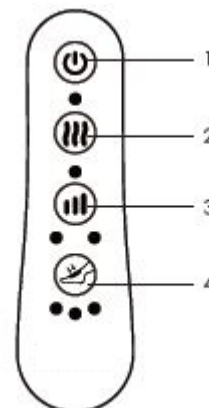
Instructions for Use

Please read and retain these instructions for future reference

v001: 23/03/20

Remote control

1. Power button ON/OFF
2. Heating button ON/OFF
3. Massage speed (Low/High)
4. Air Compression (Low/Medium/High)



This device is for household use ONLY and must not be used for commercial or medical purposes. If you have health concerns, consult your doctor before using this massage cushion.



The foot massager must only be used in enclosed spaces (indoor locations).



Do NOT use the foot massager in damp rooms e.g. when bathing or showering.



- Do NOT wash!
- Do NOT dry clean!

Operations for Use

Symptom	Cause	Solution
The product does not work	The plug is not inserted correctly. The power key has not been pressed The product turns off automatically after finishing after 15 minutes	Insert the plug properly. Press the Power Key. If you massage for longer, press the power key again.
The product is not hot or cannot be used suddenly midway through a massage.	You have already done several cycles of 15 minutes massages.	Take off the power plug and let it cool. Always take off the power plug after using it.

Head Office, 11 Bridge Street,
Bishop's Stortford CM23 2JU
Tel: 0844 482 4400*
Fax: 01279 756 595
www.coopersofstortford.co.uk

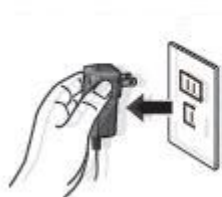
*Calls cost 7 pence per minute plus your
telephone company's network access charge

Coopers
OF STORTFORD

Cleaning

Before you clean, make sure that the switch is in the off position and the power plug has been pulled out from the socket. Please use a dry cloth to wipe the product.

Please do not use benzene or thinner or other aggressive detergents to clean the product.



Maintenance

Keep the product clean and do not use in a wet environment.

PLUG WIRING (UK & IRELAND)


This appliance is supplied with a mains adaptor/charger with BS1363 plug pins.

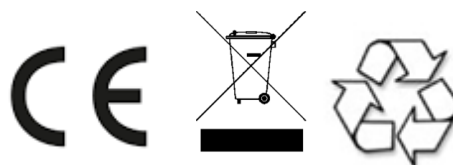
DO NOT use If the socket outlets in your home or office are not suitable for this product's mains adaptor/charger plug pins. Attempts to insert the mains adaptor/charger into the wrong socket is likely to cause electric hazard or damage.

DO NOT use with any other mains transformer/charger than the one that is supplied with this product.

DISPOSAL

- Dispose of all packaging, paper, cartons, plastic and plastic bags in accordance with your local recycling regulations.

Code & Symbol	 OTHER
Type of Plastic	Please Specify (includes ABS, Nylon)
Commonly used for	CD's, crisp packets, various flexible packaging, baby bottles, sunglass lenses
Notes	Not often or widely recycled



- At the end of the product's lifespan please dispose of it at an authorised household WEEE waste recycling centre.

Open Toe Foot Heat Massager G609

Instructions for Use

Please read and retain these instructions for future reference

v001: 23/03/20

*Calls cost 7 pence per minute plus your
telephone company's network access charge

Head Office, 11 Bridge Street,
Bishop's Stortford CM23 2JU
Tel: 0844 482 4400*
Fax: 01279 756 595
www.coopersofstortford.co.uk

Coopers
OF STORTFORD