

Pro Gold Steam Iron

G651 v01: 01/06/20

Please read and retain these instructions for future reference

BERGSTRÖM



Technical data

220-24V ac

50-60Hz

2000-2400W (2400W max)

Dimensions

34cm x 12.3cm x 15.5cm



Caution
Hot surface

CAUTION! THIS ELECTRICAL APPLIANCE'S EXTERNAL SURFACES WILL GET HOT IN NORMAL USE. ALLOW TO COOL BEFORE TOUCHING THE EXTERNAL SURFACES.

- CAN BE USED CORDED AND CORDLESS
- PERFECT FOR IF YOU WANT TO VERTICALLY STEAM IRON A SHIRT OR YOUR CURTAINS
- CERAMIC SOLEPLATE WHICH WILL GLIDE OVER YOUR CLOTHES FOR AN EASIER IRON AND WITHOUT SCRATCHING
- POWERFUL 2200 WATTS TO TACKLE CREASES WITH EASE
- TAKING JUST 2 MINUTES TO HEAT UP
- VARIABLE STEAM FUNCTIONS
- ANTI-DRIP FUNCTION SO NO MORE MARKING YOUR CLOTHES
- LARGE CAPACITY 380ML TANK
- 380 DEGREE CORD ROTATION
- COMES WITH HANDY RE-FILL MINI JUG
- LIGHTWEIGHT
- 120G PER MINUTE STEAM OUTPUT
- 150G PER MINUTE STEAM BURST PERFECT FOR TOUGHER CREASES

ASSEMBLY INSTRUCTIONS / INSTRUCTIONS FOR USE:

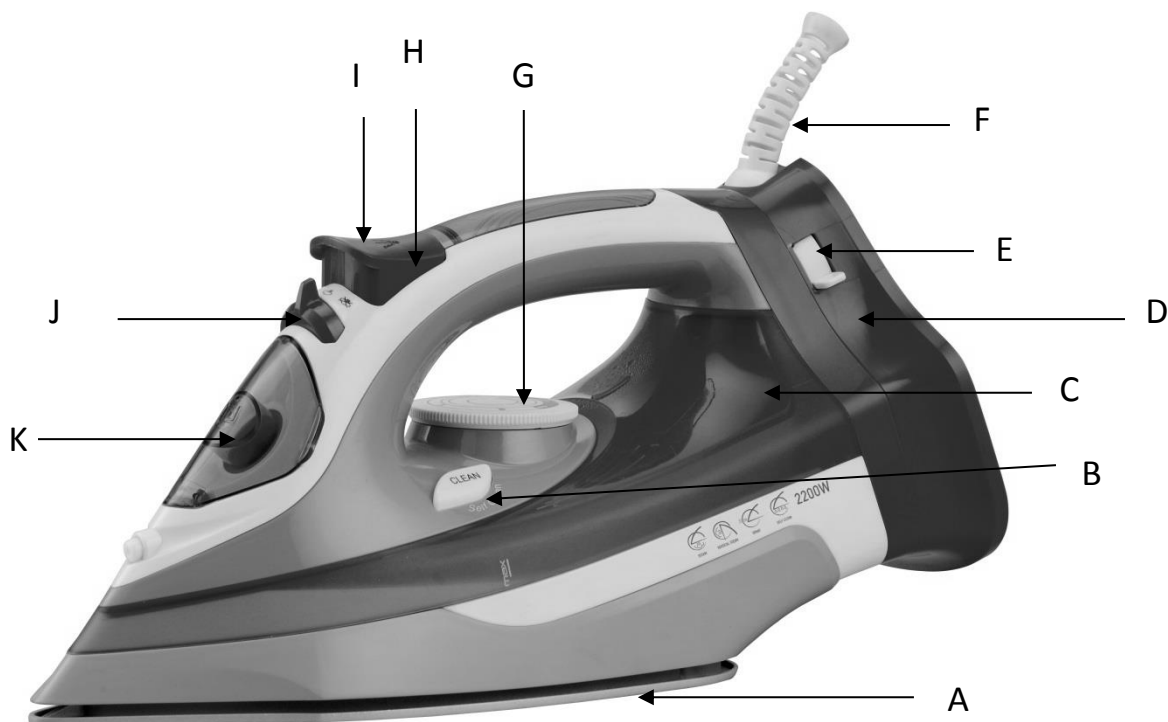
Unpack the components carefully. Please check all parts have been removed from the packaging.

CAUTION: To avoid circuit overload, do not operate another high wattage appliance on the same circuit.

IMPORTANT SAFETY INFORMATION:

Please read all instructions and warnings in this instruction manual before using this electrical steam iron. Only use with the base provided.

PARTS DIRECTORY




- A. Soleplate
- B. Self cleaning button
- C. Water tank
- D. Base
- E. Unlock button
- F. Cord bushing
- G. Temperature control dial
- H. Spray button
- I. Burst of steam button
- J. Steam regulator
- K. Water inlet cover

HOW TO USE**NOTE**

- Remove any labels, stickers or protective foil that may be attached to the body or soleplate of the iron before the first time use.
- The iron may give off some smoke and emit an odour when you first use it. This will cease after a short while. It is safe and will not harm the performance of the iron.

Turn the temperature control dial round to set the appropriate temperature indicated in ironing instructions or in fabric label.

LABEL	TYPE OF TEXTILE
	Do not iron this article
•	Synthetics, Nylon, Acrylics, Polyester, Rayon
••	Wool, Silk
•••	Cotton, Linen

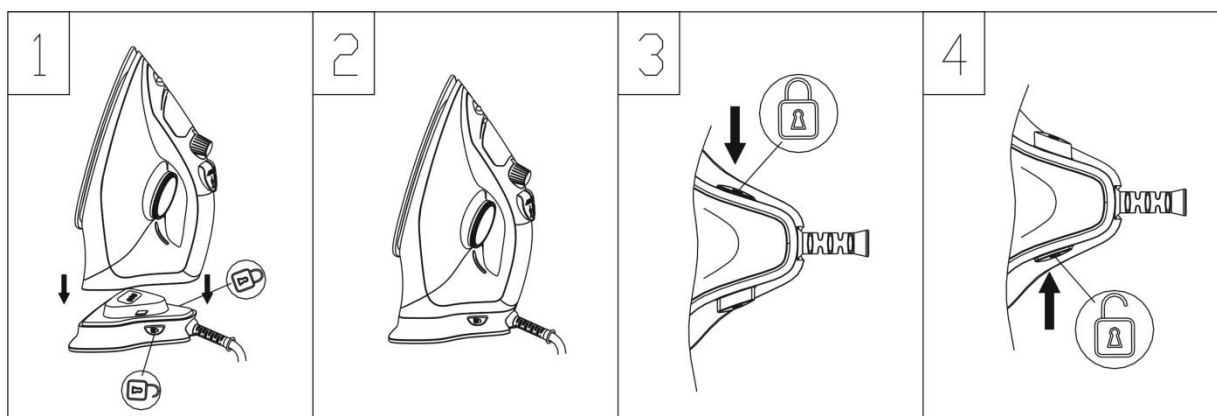
Insert the main plug into the wall socket. The indicator light will turn on.

When the indicator light goes out you may start ironing.

If you set the temperature control to a lower setting after ironing at a high temperature. it is not recommended to iron before the pilot light switches on again.

USING THE IRON WITH OR WITHOUT POWER CORD

- As shown in fig1, the base needs to be placed horizontally.
- As shown in fig2, pay attention to safety for charging status. After charging, press the button to lock the base to the iron as shown in fig3. To lock in place you have to tilt the iron forward and then tilt it back then lock in place with the switch on the base. It can then be used with the power cord.
- After charging, if you want to use the iron without the base, please press the unlock button, as shown in fig4.

**WATER TANK FILLING**

- Unplug the iron before filling the water tank.
- Hold the steam iron in horizontal position.
- Slowly pour water through the water inlet.
- Do not fill higher than mark on the water tank, in order to avoid spilling out of water.

NOTE: Your steam iron is designed to use tap water. In areas of hard water, it is advisable to use distilled water.

The water tank should be emptied after each use.

NOTE: if you empty the water tank after the steam iron has cooled down, set the steam iron upright on its heel rest, plug it in and set the temperature control dial to the maximum position, heat for 2 minutes. Unplug the steam iron from the power supply.

SPRAYING

As long as there is enough water in the water tank, you may use the spray button at any temperature setting during steam or dry ironing.

Press the spray button several times to activate the pump while you are ironing.

STEAM IRONING

Set the temperature control dial to the “.” or “...” position.

Set the variable steam control to the desired position.

CAUTION: Avoid coming in contact with ejected steam. Danger of burns.

DRY IRONING

The steam iron can be used on the dry setting with or without water in the water tank, it is best to avoid having the water tank full while dry ironing.

Turn the variable steam control to the minimum position.

Select the setting on the temperature control dial best suited for the fabric to be ironed. The red light comes on when the correct temperature has been reached and then turns off.

CAUTION: If the steam iron has been used for a long time and needs refilling, let iron cool down before refilling.

BURST OF STEAM

The burst of steam feature provides additional steam for removing stubborn wrinkles.

Turn the temperature control to “.” or “...” position.

Turn the variable steam control to the maximum position

Press the powerful steam button to release the burst of steam.

NOTE: To prevent water leakage from the soleplate, do not keep the powerful steam button pressed for more than 5 seconds.

WHEN YOU FINISHED IRONING

Set the temperature dial to the minimum position.

Remove the main plug from the wall socket.

Stand the iron on its heel rest.

CARE AND CLEANING

Before cleaning the steam iron ensure it is unplugged from the power supply and has completely cooled down.

Do not use abrasive cleaners.

SELF-CLEANING

- Fill the water reservoir halfway.
- Set the temperature control to its maximum position.
- Insert the main plug into the wall socket.
- Allow the iron to heat up until the indicator light goes out.
- Unplug the steam iron.
- Holding the iron horizontally over the sink, change the steam control to the maximum position.
- Boiling water and steam will be ejected from the holes in soleplate with impurities washed out.
- Move the iron over an old piece of cloth. This ensures that the soleplate will be dry during storage.

AUTOMATIC ANTI-DRIP FUNCTION

Your iron has anti-drip function. The iron automatically stops generating steam when the temperature is too low to prevent water from dripping out of the soleplate.

STORAGE

Unplug the appliance from the power supply, empty the water tank (do it after each use) and allow steam iron to cool down completely.

Wrap the cord around the heel rest.

To protect the soleplate, place the steam iron in an upright position on its heel rest.

WARNINGS AND SAFETY INSTRUCTIONS:

WHEN USING ELECTRICAL APPLIANCES, BASIC SAFETY PRECAUTIONS SHOULD ALWAYS BE FOLLOWED:

- READ ALL INSTRUCTIONS BEFORE USE.
- FOR DOMESTIC INDOOR USE ONLY.
- DO NOT USE OUTDOORS OR FOR COMMERCIAL USE.
- BEFORE USE, CHECK THOROUGHLY FOR ANY DEFECTS AND DO NOT USE IF DEFECTS ARE FOUND. TAKE CARE NOT TO DROP THE APPLIANCE AS HEAVY IMPACTS MAY CAUSE INTERNAL DAMAGE.
- BEFORE CONNECTING THE APPLIANCE, CHECK IF THE VOLTAGE INDICATED ON THE BOTTOM OF THE APPLIANCE IS IN ACCORDANCE WITH THE MAINS VOLTAGE IN YOUR HOME.
- CHECK THE APPLIANCE AND POWER CABLE CAREFULLY FOR DAMAGE BEFORE EACH USE.
- THIS APPLIANCE CAN BE USED BY CHILDREN AGED FROM 8 YEARS AND ABOVE AND PERSONS WITH REDUCED PHYSICAL, SENSORY OR MENTAL CAPABILITIES OR LACK OF EXPERIENCE AND KNOWLEDGE IF THEY HAVE BEEN GIVEN SUPERVISION OR INSTRUCTION CONCERNING USE OF THE APPLIANCE IN A SAFE WAY AND UNDERSTAND THE HAZARDS INVOLVED. CHILDREN SHALL NOT PLAY WITH THE APPLIANCE. CLEANING AND USER MAINTENANCE SHALL NOT BE MADE BY CHILDREN WITHOUT SUPERVISION.
- KEEP THE IRON AND ITS CORD OUT OF REACH OF CHILDREN LESS THAN 8 YEARS OF AGE WHEN IT IS ENERGISED OR COOLING DOWN.
- **SOME PARTS OF THIS PRODUCT CAN BECOME VERY HOT AND CAUSE BURNS. PARTICULAR ATTENTION HAS TO BE GIVEN WHERE CHILDREN AND VULNERABLE PEOPLE ARE PRESENT.**
- THE USE OF ANY ACCESSORY ATTACHMENTS NOT RECOMMENDED BY COOPERS OF STORTFORD MAY CAUSE INJURIES AND INVALIDATE ANY WARRANTY YOU MAY HAVE.
- DO NOT LET THE POWER CABLE HANG OVER THE EDGE OF A TABLE OR COUNTER, OR TOUCH HOT SURFACES.
- DO NOT PLACE ON OR NEAR HEAT SOURCES.
- USE ON A LEVEL, STABLE SURFACE.
- DO NOT COVER THE ITEM IN ANY WAY WHEN IN USE AS THIS MAY CAUSE OVERHEATING.
- DO NOT USE THIS APPLIANCE FOR ANY OTHER USE THAN THE INTENDED USE IT IS DESIGNED FOR.
- ENSURE THERE IS SUFFICIENT DISTANCE BETWEEN THIS APPLIANCE AND OTHER ITEMS ON THE WORK SURFACE OR WORKSTATION, OR SUFFICIENT DISTANCE BETWEEN THE APPLIANCE AND THE CONFINES OF THE AREA IN WHICH IT IS SITUATED. WE RECOMMEND A MINIMUM CLEARANCE AROUND ALL FACES OF AT LEAST 10CM.
- ALLOW THE ITEM TO COOL THOROUGHLY BEFORE PUTTING ON OR TAKING OFF PARTS.
- TO PROTECT AGAINST ELECTRIC SHOCK, DO NOT IMMERSE POWER CABLE, PLUG OR APPLIANCE, IN WATER OR ANY OTHER LIQUID.
- UNPLUG FROM OUTLET WHEN NOT IN USE AND BEFORE CLEANING.
- DO NOT OPERATE ANY APPLIANCE WITH A DAMAGED POWER CABLE OR PLUG OR AFTER THE APPLIANCE MALFUNCTIONS, OR HAS BEEN DAMAGED IN ANY MANNER. WE RECOMMEND THAT THE POWER CABLE IS NOT KINKED OR STORED IN A TWISTED MANNER, AND THAT YOU REGULARLY CHECK ITS CONDITION.

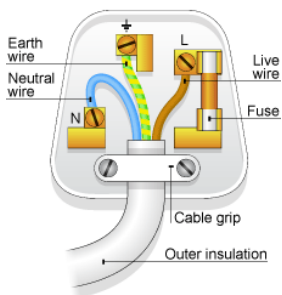
- ANY REPAIRS MUST BE CONDUCTED BY A QUALIFIED ELECTRICIAN OR ELECTRICAL SERVICE AGENT.
- DO NOT LEAVE THE IRON UNATTENDED WHILE HOT OR CONNECTED OR ON AN IRONING BOARD.
- IF IRONING IS INTERRUPTED, STAND IRON ON HEEL REST ONLY, DO NOT PLACE THE STEAM IRON ON METAL OR ROUGH SURFACES.

PLUG WIRING (UK & IRELAND)

This appliance is fitted with a BS 1363 13-amp plug. If you have to replace the fuse, only those that are ASTA or BSI approved to BS1362 and with a rated current of 13-amps should be used. If there is a fuse cover fitted, this cover must be re-fitted after changing the fuse. If the fuse cover is lost or damaged the plug must not be used. Spare fuse holders and fuses are available from electrical outlets. If the socket outlets in your home or office are not suitable for this product’s plug, the plug must be removed and disposed of safely. Attempts to insert the plug into the wrong socket is likely to cause electric hazard. A replacement plug should be wired according to the following instructions:

The cable

A mains electricity cable contains two or three inner wires. Each has a core of copper and an outer layer of flexible plastic. This product is earthed; the wires in the cord set are colour coded in the following way:





- | | |
|----------------|---------|
| BLUE | NEUTRAL |
| BROWN | LIVE |
| GREEN & YELLOW | EARTH |

The diagram shows the key features of a correctly wired three-pin mains plug.

DISPOSAL

- Coopers of Stortford use recyclable or recycled packaging where possible.
- Please dispose of all packaging, paper, cartons, packaging in accordance with your local recycling regulations.
- Plastics, polybags – the handle is made from the following recyclable plastic.



Code & Symbol	Type of Plastic	Commonly used for	Notes
	Polypropylene	Microwaveable food containers, yoghurt pots, butter tubs, disposable plates and cups	Commonly recycled and collected from household recycling bins (packaging tape itself not recyclable but does not interfere with cardboard)
	PBT Polybutylene terephthalate PC Polycarbonate	CD’s, crisp packets, various flexible packaging, baby bottles, sunglass lenses	Not often or widely recycled

- At the end of the product’s lifespan please check with your local council authorised household waste recycling centre for disposal.

