

# Red LED Epilator

H113 v02: 21/10/22

Please read and retain these instructions for future reference

vivadia

## Dimensions

20 x13 x4cm



- SINGLE PRECISION EPILATOR HAS A SINGLE ROTATING FUNCTION THAT REMOVES HAIRS AT THE ROOT WITH PRECISION
- INCLUDES AN LED LIGHT SO YOU CAN SEE IN MORE DETAIL
- REQUIRES 2 AAA BATTERIES (NOT INCLUDED)
- ITS SPINNING VANES ENSURE A GENTLE HAIR REMOVAL FROM HEAD TO TOES. GENTLE ENOUGH TO REMOVE HAIR ON THE UPPER LIP, CHIN AND OTHER SENSITIVE PARTS.
- SMOOTH SKIN FOR UP TO 6 WEEKS DEPENDING ON SENSITIVITY.
- ERGONOMIC SHAPE
- USE ON FACE, ARMPITS, LEGS, BIKINI LINE
- TAKES AWAY THE RISK OF USING A RAZOR

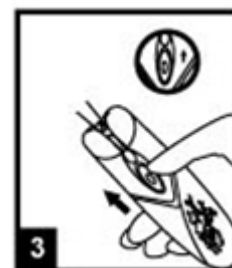
When you use the epilator for the first time, open the lid of the battery compartment (picture 1), then insert 2x AAA batteries (not included) by observing the polarity indicated in the battery compartment and put the lid of the battery compartment back in place (picture 2).



**REMARK:** Before using the epilator for the first time, try the product on your hand. The light perception you feel will reduce in the course of time.

## USING INSTRUCTIONS:

- When you remove hair at the root, it is important to keep the skin stretched in order to avoid pinches and to reduce possible uncomfortable feeling.
- When you switch on the epilator, the light indicator should light up (picture 3).
- Hold the epilator in a 90° angle position in relation to the depilation area by keeping the product “back facing you”.
- No pressure is necessary.



The Enterprise  
Department

UK Head Office, 11 Bridge Street, Bishop's Stortford, CM23 2JU

Tel: 0844 4824400\*, Fax: 01279 756595

[www.coopersofstortford.co.uk](http://www.coopersofstortford.co.uk)

EU address: D.S.B. LD, 160 Bd. de Fourmies, 59100 Roubaix, France

Tel: (+44) 1279 701269

\*UK Calls cost around 7 pence per minute plus your telephone company's network access.  
Please check with your telephone supplier.

Please read and retain these instructions for future reference

v002: 21/10/22

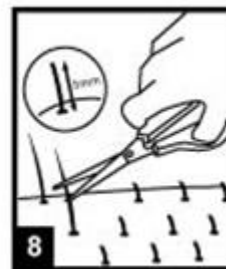
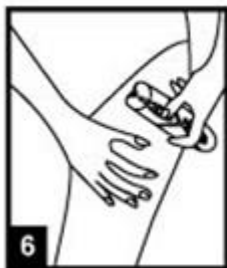
- Move the epilator by doing quick and light circles on the skin surface (picture 4).
- For epilating the backside of the knee, stretch your leg in order to have your skin stretched, and then hold the appliance as previously indicated in a 90° angle position.
- It is necessary to clean the epilator after each use. Please refer to “How to clean the epilator”.



The epilator can be used to remove hair from the face, on the superior lip (picture 5), chin and cheeks. Do not use the epilator for the eyebrows. It is possible to use it for the area between the eyebrows.

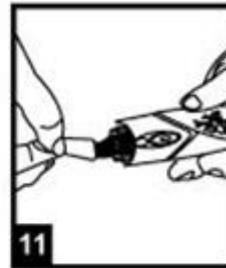


If you wish to use the epilator for removing hair at the bikini area (picture 6), armpit (picture 7) and legs, only remove hair that is longer than 5 mm (picture 8).



#### HOW TO CLEAN THE EPILATOR:

- Be sure that the unit is turned off (picture 9).
- Carefully take the lid off from the unit (picture 10).
- Use the included brush to remove remaining hair from the epilator (picture 11).



### IMPORTANT:

- Please read the use instructions carefully and completely before using the appliance.
- Keep these instructions for future reference.
- Keep the product out of reach of children and persons with reduced physical, sensory or mental capabilities.
- The product is conceived for private use only.
- Keep the product in a dry place; do not expose the device to moisture.

**CAUTION:** Do not use the epilator when taking a bath or a shower. Your epilator is neither waterproof nor water-resistant and it is not conceived for being used near water points, in the bath or under the shower.

- Turn off the product when you do not use it and also before cleaning it.
- When switched on, the appliance must never come in contact with the hair on your head, eyelashes, ribbons, etc. to prevent any danger of injury as well as to prevent blockage or damage of the appliance.
- If you have medical problems or sensitive skin, you should see a doctor before using this product.
- The use of the unit can induce to a red or irritated skin. It is a normal reaction which disappears very quickly. In case it lasts longer than 3 days, stop using the epilator and go see a doctor.
- Do not use on a wound.
- Do not use on mucous membranes.
- Stop use in case of skin problem and consult a specialist.

**THIS EPILATOR IS NOT AN ELECTRIC RAZOR AND MUST NOT BE USED AS AN ELECTRIC RAZOR ON YOUR FACE!**


### BATTERIES

- Keep batteries away from children and pets.
- Do not mix used and new batteries.
- Remove the batteries if left for long periods.
- Never dispose of batteries in a fire.
- Battery disposal, spent or expired batteries must be properly disposed of and recycled in compliance with local regulations. For detailed information, contact your local authority.
- Follow the battery manufacturer’s safety, usage, and disposal instructions.

### DISPOSAL

- Coopers of Stortford use recyclable or recycled packaging where possible.
- Please dispose of all packaging, paper, cartons, packaging in accordance with your local recycling regulations.
- Plastics, polybags – Contains the following recyclable plastic.



Code & Symbol	 OTHER
Type of Plastic	Please Specify (includes ABS, Nylon)
Commonly used for	CD's, crisp packets, various flexible packaging, baby bottles, sunglass lenses
Notes	Not often or widely recycled

- At the end of the product's lifespan please check with your local council authorised household waste recycling centre for disposal.

