

Solar Bouncing Bee & Ladybird

H245 v001: 16/11/20

Please read and retain these instructions for future reference

GAINSBOROUGH
Garden & Wildlife



ALWAYS POSITION IN DIRECT SUNLIGHT FOR BEST CHARGING.

Dimensions

LADYBIRD – 12.5 x11 x12cm

BEE – 15 x13.5 x13cm

- **THESE SPRINGY LADYBIRD AND BUMBLE BEE SET WILL REALLY ADD SOME JOY TO YOUR GARDEN**
- **BOUNCING AROUND IN THE WIND WITH THE SUN DANCING OFF THEM AND AT NIGHT TIME THEIR LITTLE TUMMIES AUTOMATICALLY LIGHT UP**
- **IDEAL FOR SCATTERING FROM TREE BRANCHES, KIDS AND ADULTS WILL ALL FALL FOR THEM.**
- **Battery: 1 x 1.2V AAA battery rechargeable (included)**

ASSEMBLY INSTRUCTIONS / INSTRUCTIONS FOR USE:

Unpack the components carefully. Please check all parts have been removed from the packaging.

Find an ideal Place for the Solar Light.

Place the solar light in an area where it will receive direct sunlight for at least 8 hours per day. The number of hours the light will illuminate is directly proportional to the hours of sunlight it receives. If the light is placed in a shaded area, it will not be able to fully charge and its illumination time will be limited. Do not place the light near other outdoor lighting like porch or streetlights. These may fool the sensor and keep the light from coming on, or cause it to turn off automatically.

FIRST TIME USE:

Slide the ON/OFF switch to “ON” position, the light sensor will control the light automatically. When it gets dark, the solar light will turn on and use the energy stored in the battery. If you slide the switch again, the solar light will turn off to save energy.

If the solar light does not turn on automatically at night after 6 hours of charging during the day, please check the following:

- (1) Make sure the power switch is at the “ON” position.
- (2) Check the battery and make sure the battery contacts the terminal securely.
- (3) Make sure the solar light is located in a sunny location and the solar panel can receive direct sunlight.

Care and Maintenance Recommendations

1. Clean solar panel with a soft sponge every couple of weeks.
2. Make sure all connectors are still tight and no water getting in.
3. During the winter if you can bring it inside and give a good clean ready for next year.

*Calls cost 7 pence per minute plus your telephone company's network access charge

The Enterprise Department
Head Office: 11 Bridge Street
Bishop's Stortford, CM23 2JU
Tel: 0844 482 4400*
Fax: 01279 756 595
www.coopersofstortford.co.uk

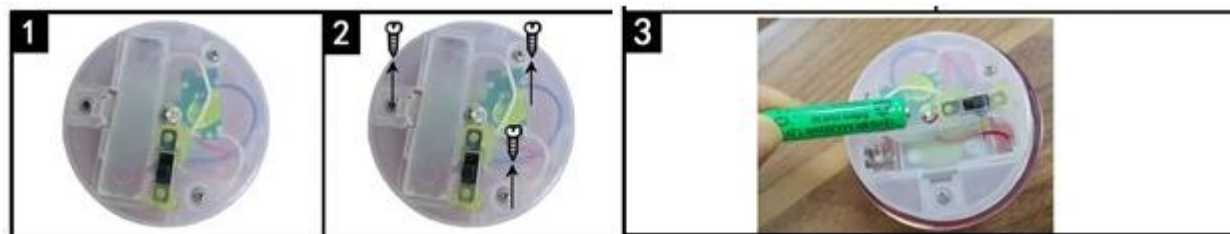
Solar Bouncing Bee & Ladybird H245 Instructions for Use

Please read and retain these instructions for future reference

v001: 16/12/20

REPLACE BATTERIES:

If the solar light stops working after it has been used for a long time (approximately 18 months), the battery may need to be replaced. You may open the battery cover and replace it with a new rechargeable battery. (Battery specification 1pc x 1.2V AAA battery.)





BATTERIES

- Keep batteries away from children and pets.
- Do not mix used and new batteries.
- Remove the batteries if left for long periods.
- Never dispose of batteries in a fire.
- Battery disposal, spent or expired batteries must be properly disposed of and recycled in compliance with local regulations. For detailed information, contact your local authority.
- Follow the battery manufacturer's safety, usage, and disposal instructions.

DISPOSAL

- Coopers of Stortford use recyclable or recycled packaging where possible.
- Please dispose of all packaging, paper, cartons, packaging in accordance with your local recycling regulations.
- Plastics, polybags – Contains the following recyclable plastic.



Code & Symbol	 PS	 OTHER
Type of Plastic	Polystyrene	ABS
Commonly used for	Insulation boxes, water cups, protective packaging inserts, take away containers	CD's, crisp packets, various flexible packaging, baby bottles, sunglass lenses
Notes	Not commonly recycled but waste management centres will recycle it.	Not often or widely recycled

- At the end of the product's lifespan please check with your local council authorised household waste recycling centre for disposal.



GAINSBOROUGH
Garden & Wildlife

*Calls cost 7 pence per minute plus your telephone company's network access charge

The Enterprise Department
Head Office: 11 Bridge Street
Bishop's Stortford, CM23 2JU
Tel: 0844 482 4400*
Fax: 01279 756 595
www.coopersofstortford.co.uk