

Light Up Butterfly Hanging Basket

H302 v001: 20/11/20

Please read and retain these instructions for future reference

GAINSBOROUGH
Garden & Wildlife

Dimensions

25.5 *25.5 *30.5cm (+ LENGTH OF CHAIN 36CM)

- PRETTY SUMMER ARTIFICIAL FLOWER HANGING BASKET SCATTERED WITH PASTEL BUTTERFLIES MAKES FOR A STUNNING SUMMER SHOW
- WHATS MORE THERE ARE WHITE LEDS SCATTERED THROUGHOUT THE BASKET WHICH ARE BATTERY OPERATED SO AT NIGHT TIME IT TWINKLES
- FOREVER IN BLOOM AND MAINTENANCE FREE
- READY TO HANG
- HANG INDOORS OR OUT FOR A SPLASH OF SUMMER COLOUR
- CHAIN LENGTH 36CM

Battery: 2x AA 1.5V (not included)

10x warm white LED lights (not replaceable)



ASSEMBLY INSTRUCTIONS / INSTRUCTIONS FOR USE:

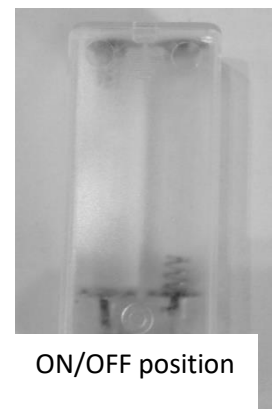
Unpack the components carefully. Please check all parts have been removed from the packaging.

OPERATION:

1. Set button to "ON" position to switch on LED light.

IMPORTANT:

1. Use 2 xAA battery 1.5V with 100 percent power.
2. Leave the button to "ON" position



BATTERY REPLACEMENT:

Step1: The battery compartment is in the box. Remove battery box sliding cover by sliding the cover down.

Step2: Remove the exhausted battery and install 2x new AA battery according to the polarity symbol indicated on the battery compartment.

*Calls cost 7 pence per minute plus your telephone company's network access charge

The Enterprise Department
Head Office: 11 Bridge Street
Bishop's Stortford, CM23 2JU
Tel: 0844 482 4400*
Fax: 01279 756 595
www.coopersofstortford.co.uk

Step3: Replace battery box cover, slide it back into the correct position.



BATTERIES

- Keep batteries away from children and pets.
- Do not mix used and new batteries.
- Remove the batteries if left for long periods.
- Never dispose of batteries in a fire.
- Battery disposal, spent or expired batteries must be properly disposed of and recycled in compliance with local regulations. For detailed information, contact your local authority.
- Follow the battery manufacturer’s safety, usage, and disposal instructions.

DISPOSAL

- Coopers of Stortford use recyclable or recycled packaging where possible.
- Please dispose of all packaging, paper, cartons, packaging in accordance with your local recycling regulations.
- Plastics, polybags – Contains the following recyclable plastic.



Code & Symbol		
Type of Plastic	Polypropylene	Polyester
Commonly used for	Microwaveable food containers, yoghurt pots, butter tubs, disposable plates and cups	CD’s, crisp packets, various flexible packaging, baby bottles, sunglass lenses
Notes	Commonly recycled and collected from household recycling bins (packaging tape itself not recyclable but does not interfere with cardboard)	Not often or widely recycled

- At the end of the product’s lifespan please check with your local council authorised household waste recycling centre for disposal.

