

Garden Arch with Gate

H461 v001: 28/09/20

Please read and retain these instructions for future reference

GAINSBOROUGH
Garden & Wildlife



Dimensions

114cm (L) x 52cm (W) x 206cm (H)

- ELEGANT SCROLL DESIGN HIGH QUALITY STEEL GARDEN ARCH WITH GATE
- WEATHER AND RUST RESISTANT
- COVER WITH LIGHTS OR ALLOW FLOWERS TO CLIMB AND COVER THE ARCH FOR A BEAUTIFUL FEATURE IN YOUR GARDEN OR AN ENTRYWAY TO ANOTHER SECTION OF YOUR GARDEN
- SQUARE TUBULAR STEEL
- THICK SIDE PANELS PROVIDING A TRELLIS LIKE FEATURE FOR CLIMBING PLANTS

ASSEMBLY INSTRUCTIONS / INSTRUCTIONS FOR USE:

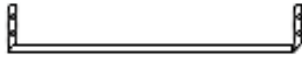

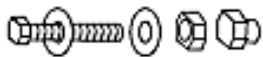
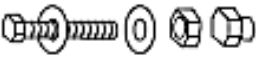


Unpack the components carefully. Please check all parts have been removed from the packaging.

Parts

A1 1PC & A2 1PC	B 2PCS
C 3PCS	D 2PCS
E 1PC	F 1PC

*Calls cost 7 pence per minute plus your telephone company's network access charge

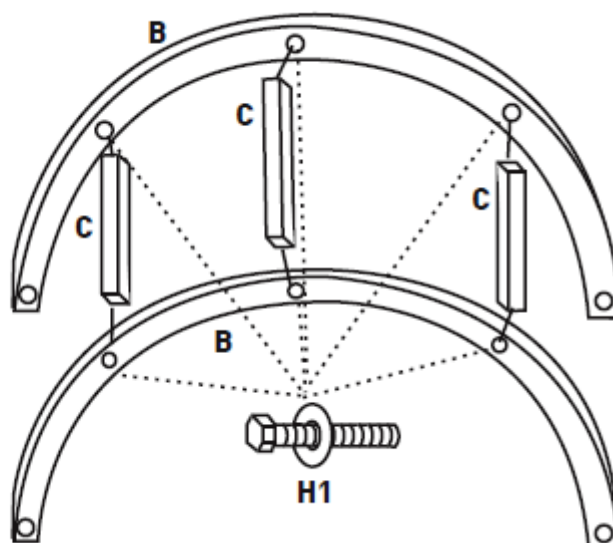
The Enterprise Department
Head Office: 11 Bridge Street
Bishop's Stortford, CM23 2JU
Tel: 0844 482 4400*
Fax: 01279 756 595
www.coopersofstortford.co.uk

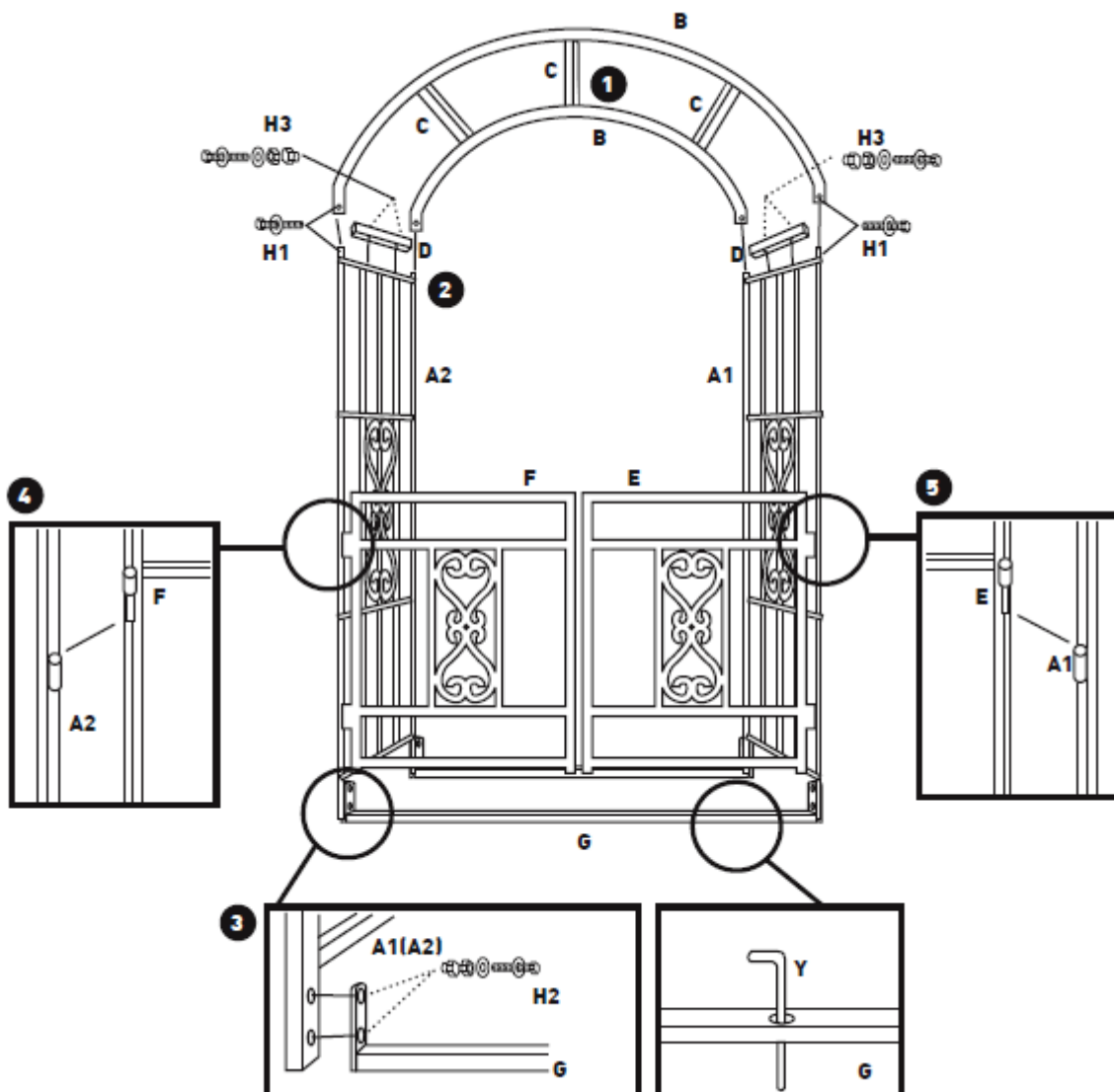
	
G 2PCS	H1 M6X28 10PCS
	
H2 M6X32 8PCS	H3 M6X52 4PCS
	
Y 4PCS	Z 1PC

Assembly

1

Make sure to use the correct bolts





We recommend the item, once assembled, is secured to the ground to prevent it being blown over in high winds. Use the provided steel pegs if on a lawn or soil. If securing on to a hard surface we would recommend using heavy duty bolts or screws (not supplied).

DISPOSAL

- Coopers of Stortford use recyclable or recycled packaging where possible.
- Please dispose of all packaging, paper, cartons, packaging in accordance with your local recycling regulations.
- At the end of the product's lifespan please check with your local council authorised household waste recycling centre for disposal.



GAINSBOROUGH
Garden & Wildlife

*Calls cost 7 pence per minute plus your telephone company's network access charge

The Enterprise Department
Head Office: 11 Bridge Street
Bishop's Stortford, CM23 2JU
Tel: 0844 482 4400*
Fax: 01279 756 595
www.coopersofstortford.co.uk