

Copper King Deep Fill Pie Maker H701 Instructions for Use

Please read and retain these instructions for future reference

v001: 05/03/21



Voltage: 220-240V, 50-60Hz

Wattage: 900W

- BAKE DELICIOUS HOME MADE PIES AND QUICHES IN MINUTES
- COOL TOUCH HANDLE AND LOCKING LATCH DESIGN
- WITH NON-STICK COOKING PLATES AND INDICATOR LIGHTS
- DEEP FILL LARGE HOLE SIZE: 112X45MM
- CORD STORAGE



Caution
Hot surface

CAUTION! THIS ELECTRICAL APPLIANCE'S EXTERNAL SURFACES WILL GET HOT IN NORMAL USE. ALLOW TO COOL BEFORE TOUCHING THE EXTERNAL SURFACES.

ASSEMBLY INSTRUCTIONS / INSTRUCTIONS FOR USE:

Unpack the components carefully. Please check all parts have been removed from the packaging.

Important Safety Instructions

- Please read the instruction manual carefully before using this device.
- This appliance is not intended for use by persons (including children) with reduced physical, sensory or mental capabilities, or lack of experience or knowledge, unless they have been given supervision or instruction concerning use of the appliance by a person that is responsible for their safety.
- Children should be supervised to ensure that they do not play with the appliance.
- If the cord is damaged, it must be replaced by the manufacturer, its service agent or similarly qualified persons in order to avoid hazard.
- This appliance is not intended to be operated by means of an external timer or separate remote control system.
- This appliance is intended to be used in a household and similar applications such as:
 - Staff kitchen areas in shops, offices and other working environments:
 - Farmhouses
 - By clients in hotels, motels another residential type environments, bed & breakfast type environments.
- By ignoring the safety instructions, the manufacturer cannot be held responsible for any damage.
- To protect children against the dangers of electrical appliances, please make sure you never leave the appliance unattended while operating.

*Calls cost 7 pence per minute plus your telephone company's network access charge

The Enterprise Department
Head Office: 11 Bridge Street
Bishop's Stortford, CM23 2JU
Tel: 0844 482 4400*
Fax: 01279 756 595
www.coopersofstortford.co.uk

Copper King Deep Fill Pie Maker H701 Instructions for Use

Please read and retain these instructions for future reference

v001: 05/03/21

- Therefore, you have to select a storage place for the appliance where children are not able to grab it. Make sure the cable is not hanging in a downward position.
- This appliance is only to be used for household purposes and only for the purpose it is made for.
- The appliance must be placed on a stable, level surface.
- Do not touch hot surfaces and always use the handle or knobs.
- Never use the device unsupervised.
- Make sure that the appliance is stored in a dry environment.
- It is absolutely necessary to keep this appliance clean at all times because it comes into direct contact with food.
- Never move the appliance by pulling the cord and make sure the cord cannot become entangled.
- The user must not leave the device unattended while it is connected to the power supply.
- To protect yourself against electric shock, do not immerse the cord, the plug or the appliance in water or in any other liquid.
- Please note the temperature of accessible surfaces may be high when the appliance is operating.
- Do not use the appliance outdoors.
- Do not wind the cord around the appliance and do not bend the cord.
- Allow the appliance to cool down (approx. 30 minutes) before cleaning or storing it.
- Do not use the appliance with a damaged cord or plug or when the appliance has malfunctioned or has been damaged in any manner.
- Do not use the appliance near direct heat sources.
- Always unplug the appliance when it is not in use.
- Make sure the cord does not touch the unit while in use.

*Calls cost 7 pence per minute plus your telephone company's network access charge

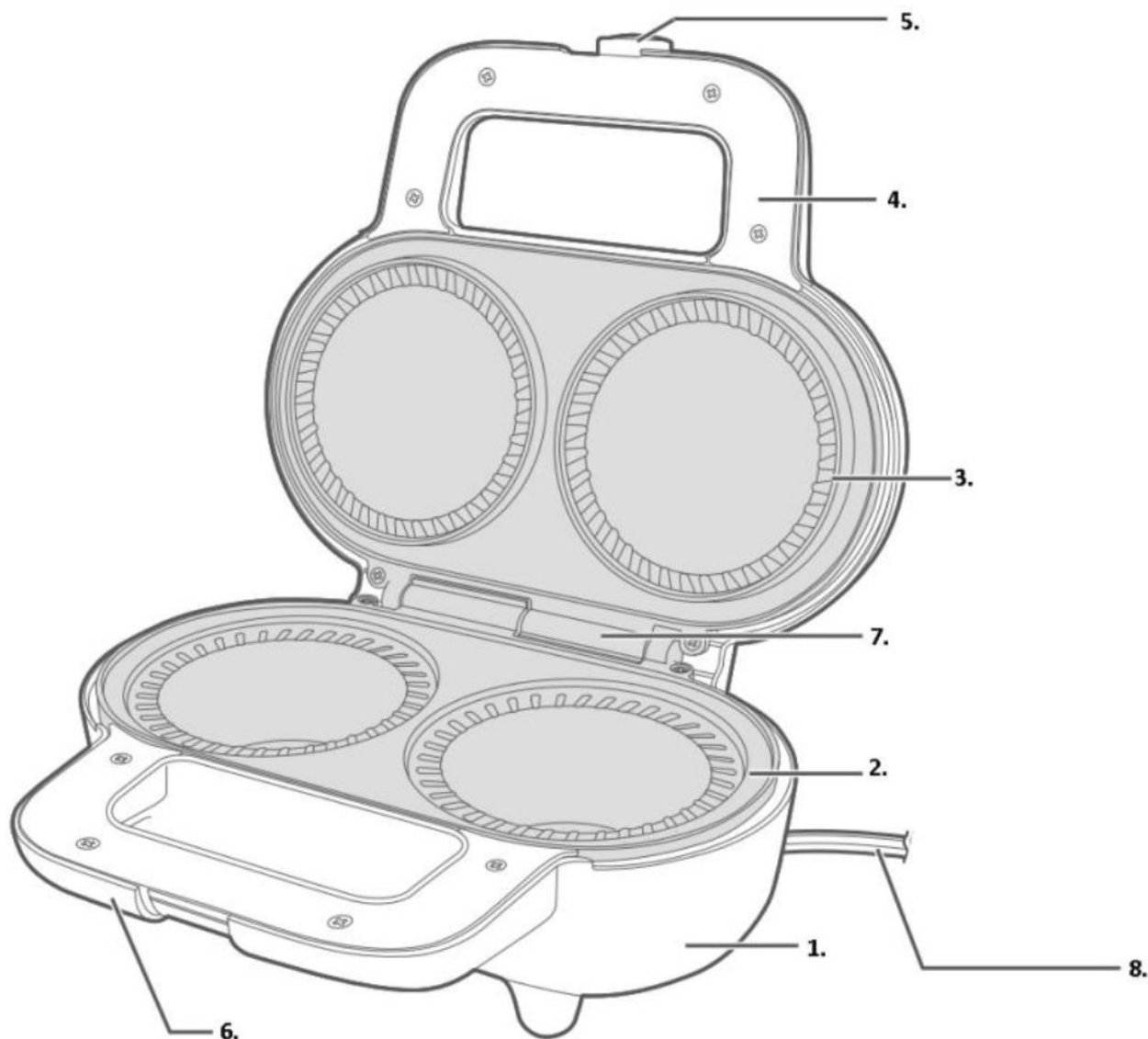
The Enterprise Department
Head Office: 11 Bridge Street
Bishop's Stortford, CM23 2JU
Tel: 0844 482 4400*
Fax: 01279 756 595
www.coopersofstortford.co.uk

Copper King Deep Fill Pie Maker H701 Instructions for Use

Please read and retain these instructions for future reference

v001: 05/03/21

Pie Maker Parts



1. Housing	5. Locking latch
2. Baking Plate	6. Handle
3. Baking Plate	7. Rotation shaft
4. Handle	8. Cord with plug set

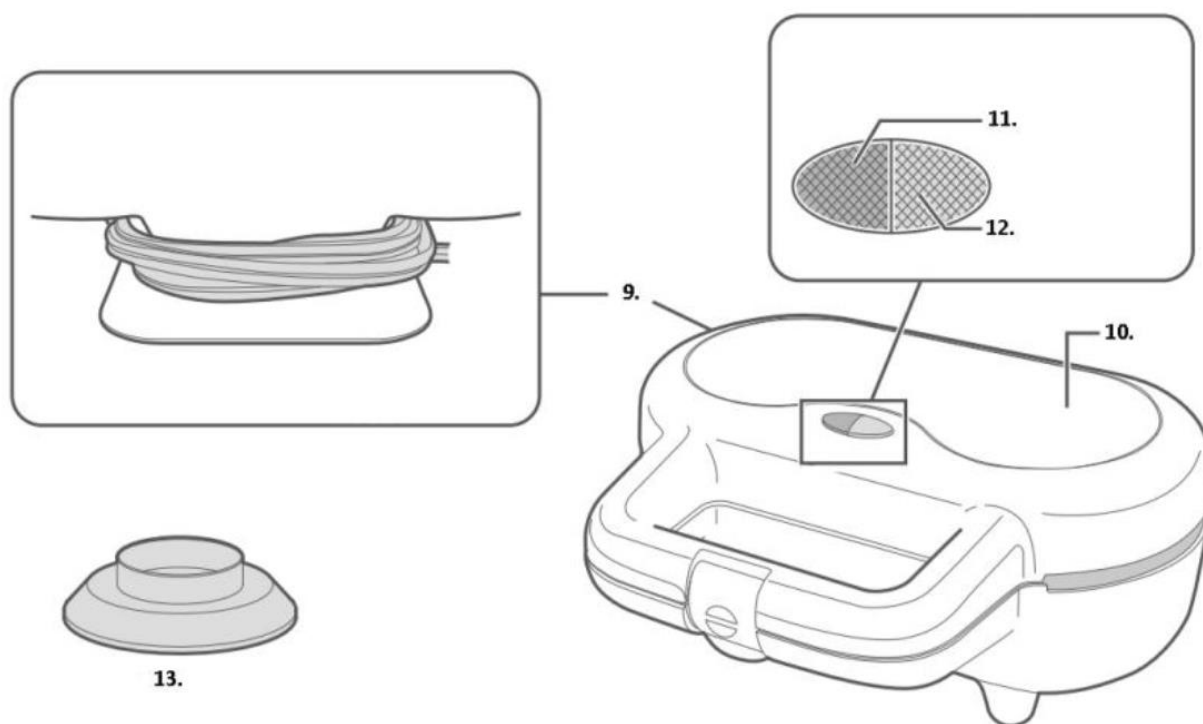
*Calls cost 7 pence per minute plus your telephone company's network access charge

The Enterprise Department
Head Office: 11 Bridge Street
Bishop's Stortford, CM23 2JU
Tel: 0844 482 4400*
Fax: 01279 756 595
www.coopersofstortford.co.uk

Copper King Deep Fill Pie Maker H701 Instructions for Use

Please read and retain these instructions for future reference

v001: 05/03/21



9. Position of cord winding	12. Ready indicator light (green)
10. Stainless steel cover	13. Pastry cutter
11. Power indicator light (red)	

Before the first use

- Take the appliance and the accessories out of the box. Remove stickers, protective foil or plastic from the device.
- Before using your appliance for the first time, wipe the device with a damp cloth. Never wash the device directly with water and never use abrasive products.
- Never immerse the device in liquid. Always place the appliance on a flat stable surface and allow at least 10 centimetres of free space around the unit. Put the power cable into the socket. (Note: Make sure the voltage which is indicated on the device matches the local voltage before connecting the device. Voltage 220V-240V, 50/60Hz.)
- Make sure that the power plug is fully inserted.
- Allow the device to heat up for at least 3 minutes without food.
- When the device is turned on for the first time a slight bad odour will occur. This is normal and temporary. The odour will disappear soon so ensure adequate ventilation.
- Place a heat resistant coating between your table and the appliance to avoid getting burns on your table or table cloth.
- Place the device in a well-ventilated space.
- Grease the non-stick coating of the baking plate lightly with oil or butter.

*Calls cost 7 pence per minute plus your telephone company's network access charge

The Enterprise Department
Head Office: 11 Bridge Street
Bishop's Stortford, CM23 2JU
Tel: 0844 482 4400*
Fax: 01279 756 595
www.coopersofstortford.co.uk

Copper King Deep Fill Pie Maker H701 Instructions for Use

Please read and retain these instructions for future reference

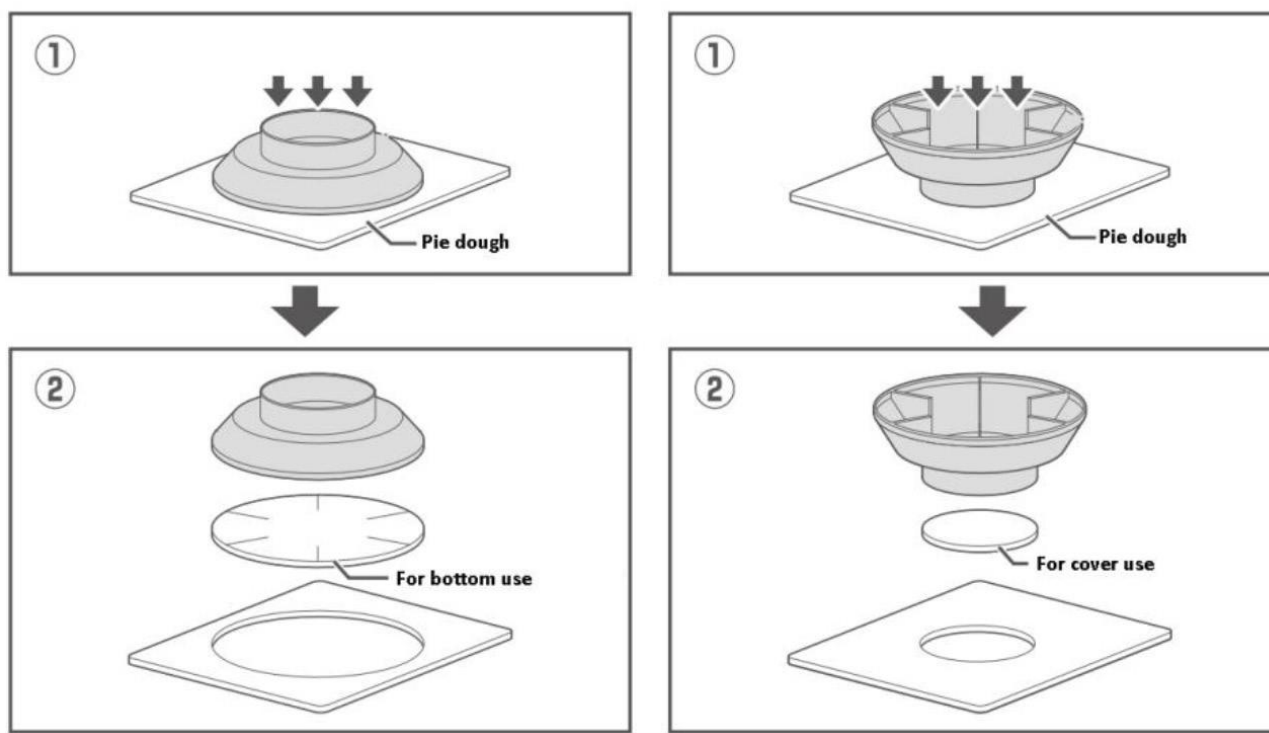
v001: 05/03/21

- During use, the baking plates and the cabinet will become very hot, avoid any contact.
- In approximately 5-10 minutes the green light will illuminate which indicates that the appliance is pre-heated and ready for use.
- The green light will switch on and off during the baking process indicating that the correct temperature is being maintained. Always keep the lid closed when preheating or in between uses.

Use

1. Prepare puff pastry

Please see the figure below showing how to use the pastry cutter in cutting shapes from pie dough in advance.



Note: Be careful not to cut your hands or fingers when holding down as the opening is sharp.

2. Turn on the power

When the power plug is inserted into the socket, the power turns on and the red power lamp lights up, heating starts.

Warning: Do not connect or disconnect the power plug with wet hands.

3. Preheating

Preheating is completed in about 5-10 minutes and the green indicator light lights up.

*Calls cost 7 pence per minute plus your telephone company's network access charge

The Enterprise Department
Head Office: 11 Bridge Street
Bishop's Stortford, CM23 2JU
Tel: 0844 482 4400*
Fax: 01279 756 595
www.coopersofstortford.co.uk

Copper King Deep Fill Pie Maker H701 Instructions for Use

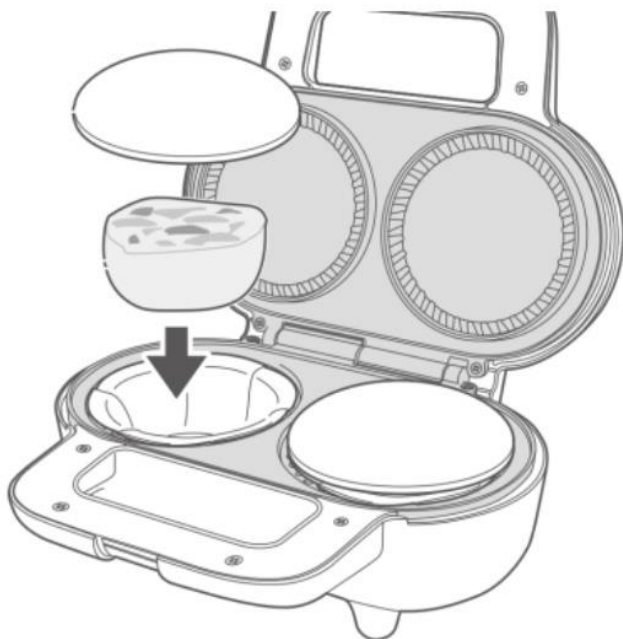
Please read and retain these instructions for future reference

v001: 05/03/21

Note: Preheating time may change depending on the season and weather. Keeping the plate closed can reduce preheating time.

4. Making pies

Always put the bottom part of the pie dough into the bottom plate of the pie maker holes, then your pie filling ingredients, and finally put the top of the pie dough.



Warning: Be careful of the hot baking plates when placing your dough and ingredients into the pie maker.

5. Baking

After placing your pie dough and ingredients into the pie maker, close the device and lock the latch. Estimate baking time is approx. 15-20 minutes. Please follow your recipe booklet instructions for more accurate cooking time.

6. Finish baking

Disconnect the power plug from socket before taking out your baked pies. Use the required tools, do not touch the baking plates with your hand when removing the pie as it may cause burns.

Warning: Do not connect or disconnect the power plug with wet hands.

CARE AND CLEANING INSTRUCTIONS:

- Before cleaning, unplug the device and make sure it has cooled down sufficiently. Please allow at least 30 minutes.
- Do not wash the device in water or any other liquid.
- Never immerse the electrical device in water or any other liquid.

*Calls cost 7 pence per minute plus your telephone company's network access charge

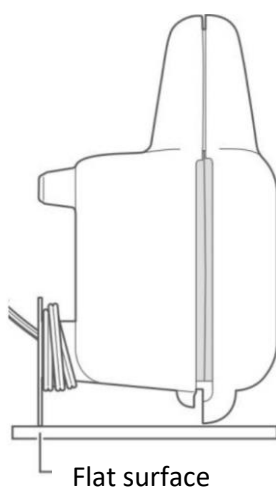
The Enterprise Department
Head Office: 11 Bridge Street
Bishop's Stortford, CM23 2JU
Tel: 0844 482 4400*
Fax: 01279 756 595
www.coopersofstortford.co.uk

Copper King Deep Fill Pie Maker H701 Instructions for Use

Please read and retain these instructions for future reference

v001: 05/03/21

- Never pour cold water on the hot plates, as this could damage the device and can cause hot water to spill out of the appliance.
- Wipe the inside part and the edges of the appliance with a paper towel or a soft cloth.
- Clean the appliance with a damp cloth. Never use harsh and abrasive cleaners, scouring pad or steel wool, which can damage the device.
- Let the device dry totally or wipe off any moisture with a dry soft cloth before storage.
- Wrap the cord around the area as seen in the figure below and store it in an upright position on a dry, flat and safe place.



PLUG WIRING (UK & IRELAND)

This appliance is fitted with a BS 1363 13-amp plug. If you have to replace the fuse, only those that are ASTA or BSI approved to BS1362 and with a rated current of 7-amperes should be used. If there is a fuse cover fitted, this cover must be re-fitted after changing the fuse. If the fuse cover is lost or damaged the plug must not be used. Spare fuse holders and fuses are available from electrical outlets. If the socket outlets in your home or office are not suitable for this product's plug, the plug must be removed and disposed of safely. Attempts to insert the plug into the wrong socket is likely to cause electric hazard. A replacement plug should be wired according to the following instructions:

The cable

A mains electricity cable contains two or three inner wires. Each has a core of copper and an outer layer of flexible plastic. This product is earthed; the wires in the cord set are colour coded in the following way:

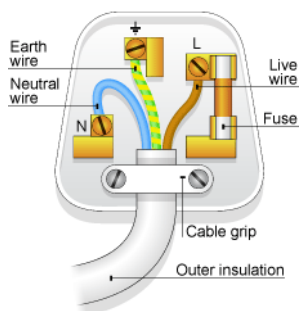
*Calls cost 7 pence per minute plus your telephone company's network access charge

The Enterprise Department
Head Office: 11 Bridge Street
Bishop's Stortford, CM23 2JU
Tel: 0844 482 4400*
Fax: 01279 756 595
www.coopersofstortford.co.uk

Copper King Deep Fill Pie Maker H701 Instructions for Use

Please read and retain these instructions for future reference

v001: 05/03/21




BLUE	NEUTRAL
BROWN	LIVE
GREEN & YELLOW	EARTH

The diagram shows the key features of a correctly wired three-pin mains plug.

DISPOSAL

- Coopers of Stortford use recyclable or recycled packaging where possible.
- Please dispose of all packaging, paper, cartons, packaging in accordance with your local recycling regulations.
- Plastics, polybags – this is made from the following recyclable plastic.



Code & Symbol	 OTHER
Type of Plastic	PF
Commonly used for	CD's, crisp packets, various flexible packaging, baby bottles, sunglass lenses
Notes	Not often or widely recycled

- At the end of the product's lifespan please check with your local council authorised household waste recycling centre for disposal.



*Calls cost 7 pence per minute plus your telephone company's network access charge

The Enterprise Department
 Head Office: 11 Bridge Street
 Bishop's Stortford, CM23 2JU
 Tel: 0844 482 4400*
 Fax: 01279 756 595
www.coopersofstortford.co.uk