

# Cutwork Snowflake Lamp

H948 v01: 21/07/21

Please read and retain these instructions for future reference



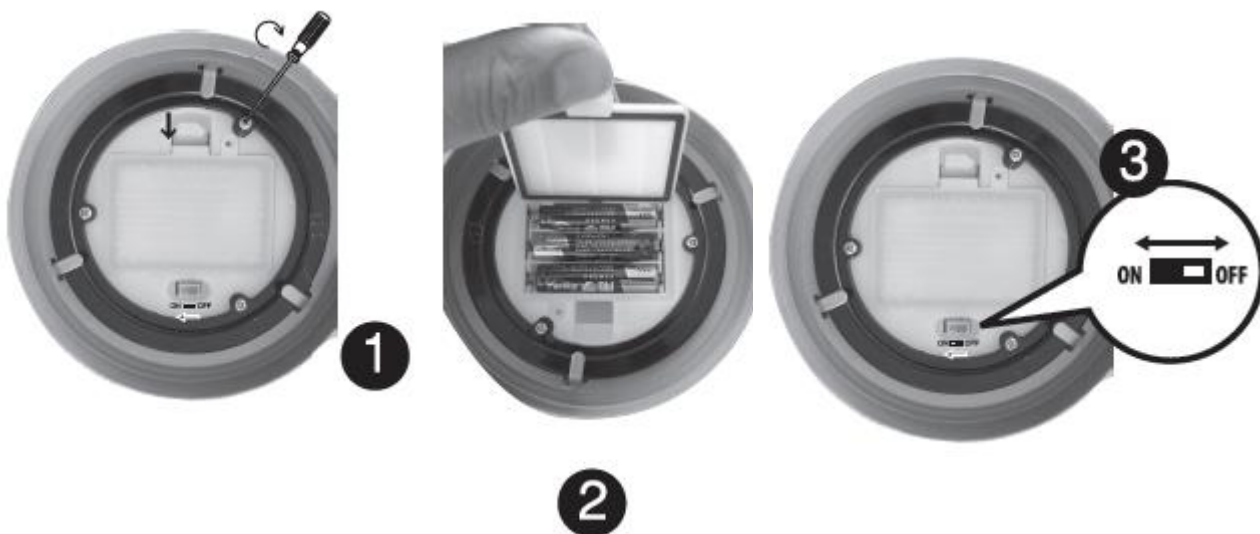
## Dimensions

(H) 19 x (D) 11cm

- LASER CUT METAL LANTERN
- CUTWORK DESIGN WITH LED CANDLE INSIDE (LEDs not replaceable)
- LIGHT PROJECTS THROUGH THE DESIGN AND CREATES A FESTIVE PATTERN AROUND THE ROOM
- 3PCS AAA BATTERIES REQUIRED (not included)
- TIMER FUNCTION
- PROJECTS LIGHT ONTO WALLS AND SURROUNDINGS DISPLAYING SNOWFLAKE DESIGNS.

**This is not a toy. Do not let children play with the product.  
Safe around children and pets.  
Do not expose the product to extreme heat or extreme pressure.**

## Installation/User instructions



- Assemble and position the lights without putting extreme pressure on the parts.
- Open battery compartment as shown and insert 3x AAA batteries (not included). Move the switch to the ON position.
- This item has a timer with repeat function. When switched on the light will work for 6 hours and then switch off automatically for 18 hours. It will then switch on again. The switch can be set either to ON or OFF. To reset the timer, turn switch to the OFF position and switch back on at a different time.



\*Calls cost 7 pence per minute plus your telephone company's network access charge

The Enterprise Department  
Head Office: 11 Bridge Street  
Bishop's Stortford, CM23 2JU  
Tel: 0844 482 4400\*  
Fax: 01279 756 595  
[www.coopersofstortford.co.uk](http://www.coopersofstortford.co.uk)

## DISPOSAL

- Coopers of Stortford use recyclable or recycled packaging where possible.
- Please dispose of all packaging, paper, cartons, packaging in accordance with your local recycling regulations.
- Plastics, polybags – Contains the following recyclable plastic.



Code & Symbol	 PP	 OTHER
Type of Plastic	Polypropylene	ABS
Commonly used for	Microwaveable food containers, yoghurt pots, butter tubs, disposable plates and cups	CD's, crisp packets, various flexible packaging, baby bottles, sunglass lenses
Notes	Commonly recycled and collected from household recycling bins (packaging tape itself not recyclable but does not interfere with cardboard)	Not often or widely recycled

- At the end of the product's lifespan please check with your local council authorised household waste recycling centre for disposal.