

# Bird Design Rolling Side Table

K065 v01: 30/07/21

Please read and retain these instructions for future reference



**Dimensions**  
30 x 21 x 55.5cm

**Wood type: MDF**

**EASY HOME ASSEMBLY -**

**WHEN FULLY ASSEMBLED PLEASE CHECK ALL SCREWS /  
FIXINGS ARE SECURE.  
REGULARLY CHECK SCREWS AND FIXINGS ARE SECURE.**

**Max weight load: 10kg for tabletop/10kg for bottom  
rack**

**To prevent tipping the table needs loading on top and  
bottom surface.**

## ASSEMBLY INSTRUCTIONS / INSTRUCTIONS FOR USE:

Unpack the components carefully. Please check all parts have been removed from the packaging.

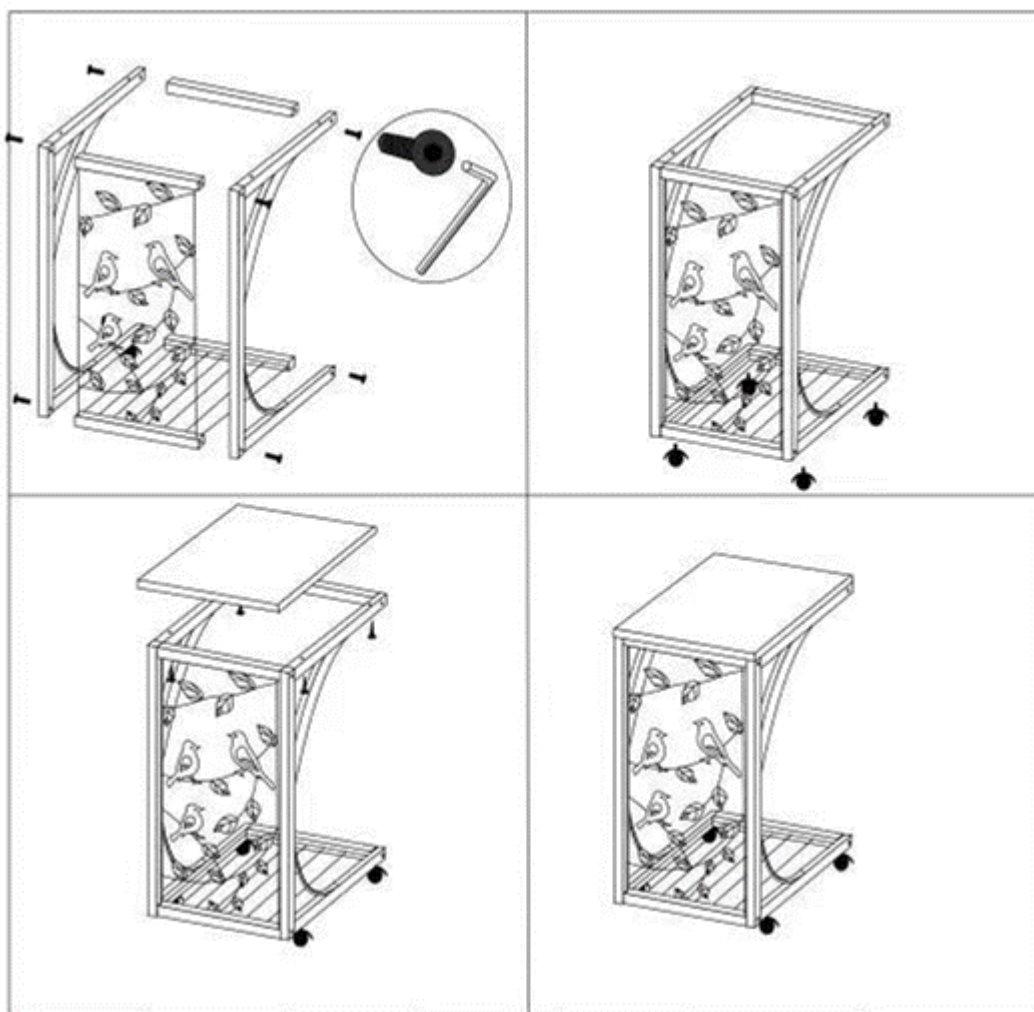
2PCS	1PC	1PC	1PC	1PC	4PCS	8PCS

# Bird Design Rolling Side Table K065

# Instructions for Use

Please read and retain these instructions for future reference

v001: 30/07/21



## CLEANING INSTRUCTIONS:

- Clean with a dry cloth or duster.

## DISPOSAL

- Coopers of Stortford use recyclable or recycled packaging where possible.
- Please dispose of all packaging, paper, cartons, packaging in accordance with your local recycling regulations.



\*Calls cost 7 pence per minute plus your telephone company's network access charge

The Enterprise Department  
Head Office: 11 Bridge Street  
Bishop's Stortford, CM23 2JU  
Tel: 0844 482 4400\*  
Fax: 01279 756 595  
[www.coopersofstortford.co.uk](http://www.coopersofstortford.co.uk)