

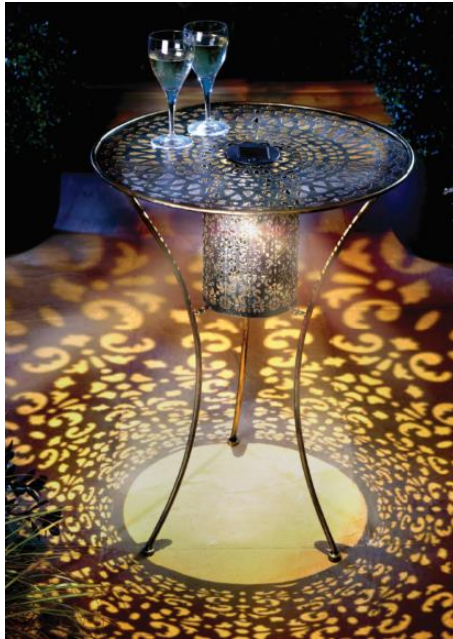
Solar Garden Table

K333 v002: 25/03/22

Please read and retain these instructions for future reference

GAINSBOROUGH
Garden & Wildlife

ALWAYS POSITION IN DIRECT SUNLIGHT



Dimensions

(H) 70 x (W) 50 x (D) 50cm

Material: Metal

Battery: 1 x 1.2V AA 300mAH NI-MH Rechargeable

- METAL BISTRO TABLE IN A BRONZE COLOURED FINISH
- THE TABLE TOP HAS A PRETTY AND INTRICATELY CUT OUT PATTERN THAT NOT ONLY CAN BE USED AS A FUNCTIONAL TABLE BUT IT ALSO HAS A BUILT IN SOLAR PANEL WHICH AT NIGHT ILLUMINATES THE WARM WHITE LED INSIDE (LEDs not replaceable)
- THE LIGHT CASCADES THROUGH THE CUT OUT DESIGN LEAVING A WONDERFUL LIGHT PATTERN ON THE GROUND BENEATH
- WEATHER RESISTANT
- SOLAR POWERED, AUTOMATICALLY ILLUMINATES AT DUSK
- IP44 RATED








Max weight load: 1kg around edge of the table, up to 10kg at the centre

ASSEMBLY INSTRUCTIONS / INSTRUCTIONS FOR USE:

Unpack the components carefully. Please check all parts have been removed from the packaging.

Assembly

Parts

A	B	C	D	E	F	G
						
3PCS	3PCS	11PCS	3PCS	1PC	1PC	1PC

*Calls cost 7 pence per minute plus your telephone company's network access charge

The Enterprise Department
Head Office: 11 Bridge Street
Bishop's Stortford, CM23 2JU
Tel: 0844 482 4400*
Fax: 01279 756 595
www.coopersofstortford.co.uk

Solar Garden Table K333

Please read and retain these instructions for future reference

Instructions for Use

v002: 25/03/22

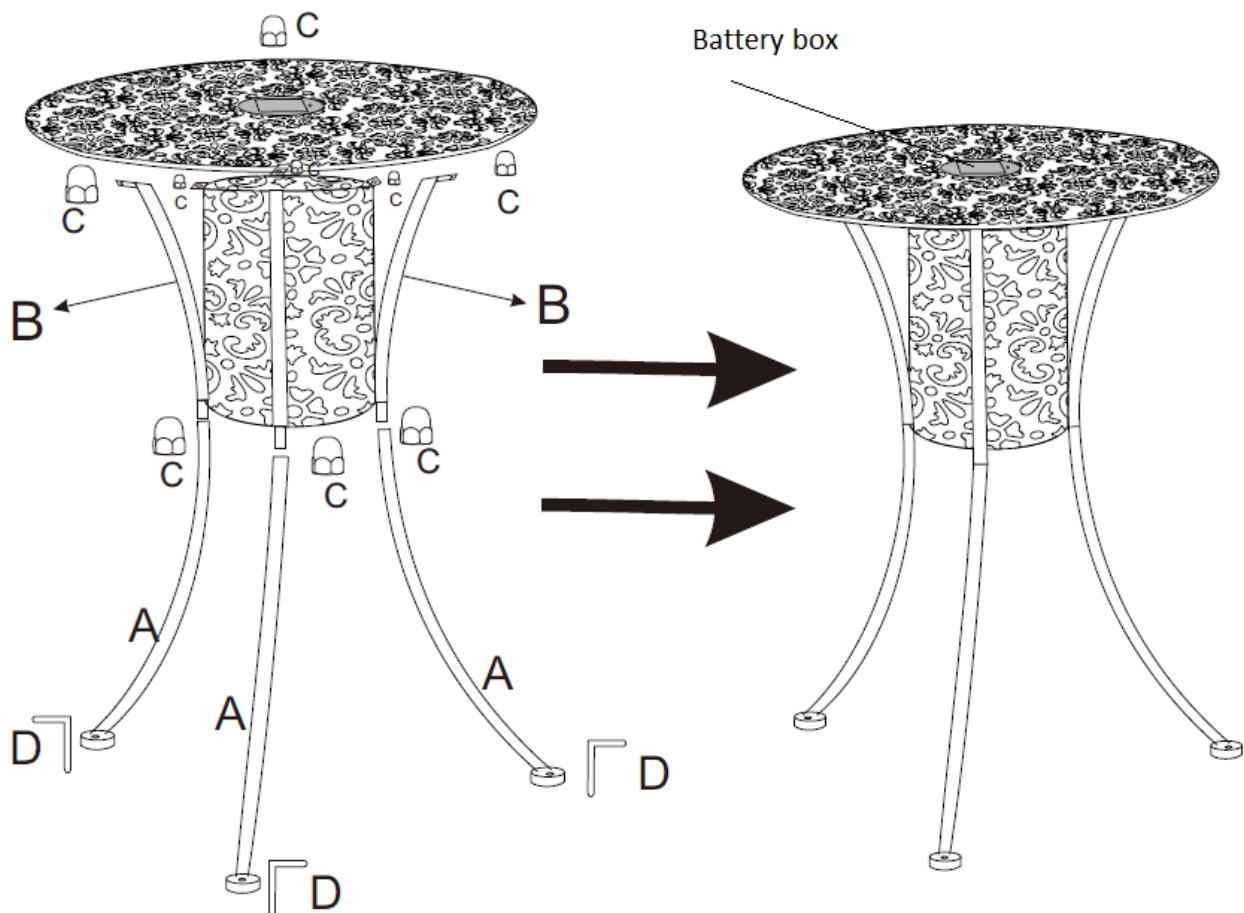
Assembly



First put together the section under the table (see photo) and tighten up with the nuts but leave them loose for the time being.

Then slot the 2 sections of the leg together and connect to middle section and the table.

Once all is connected go round and tighten up the nuts.



*Calls cost 7 pence per minute plus your telephone company's network access charge

The Enterprise Department
Head Office: 11 Bridge Street
Bishop's Stortford, CM23 2JU
Tel: 0844 482 4400*
Fax: 01279 756 595
www.coopersofstortford.co.uk

Before using first time

Before use, turn on the switch of the battery box, find a place exposed to enough direct sunlight to install the solar lamp, and make sure there is no shadow or obstacle above the solar panel. Place the solar panel in direct sunlight for 6 hours to ensure that the lamp can be charged.

During the day, the solar panel automatically absorbs the sunlight and converts sunlight into electricity, and stores it in the rechargeable batteries.

At night, the solar lamp automatically lights up. It will automatically turn off in a bright environment or when the battery is exhausted.

The lighting time of the solar lamp at night depends on the amount of sunlight received during the day, and it can illuminate for up to 8 hours.



Find an ideal Place for the Solar Light.

Place the solar light in an area where it will receive direct sunlight for at least 8 hours per day. The number of hours the light will illuminate is directly proportional to the hours of sunlight it receives. If the light is placed in a shaded area, it will not be able to fully charge and its illumination time will be limited. Do not place the light near other outdoor lighting like porch or streetlights. These may fool the sensor and keep the light from coming on, or cause it to turn off automatically

Care and Maintenance Recommendations

1. Clean solar panel with a soft sponge every couple of weeks.
2. Make sure all connectors are still tight and no water getting in.
3. The solar lamp may be damaged in low temperature. If the weather is very cold and the temperature drops below 0 °C, we suggest that place the lamp in a frost-free place and install it again when needed.

BATTERIES

- Keep batteries away from children and pets.
- Do not mix used and new batteries.
- Remove the batteries if left for long periods.
- Never dispose of batteries in a fire.
- Battery disposal, spent or expired batteries must be properly disposed of and recycled in compliance with local regulations. For detailed information, contact your local authority.
- Follow the battery manufacturer's safety, usage, and disposal instructions.

DISPOSAL

- Coopers of Stortford use recyclable or recycled packaging where possible.
- Please dispose of all packaging, paper, cartons, packaging in accordance with your local recycling regulations.
- Plastics, polybags – this is made from the following recyclable plastic.



Code & Symbol	
---------------	-------------------------------------------------------------------------------------

Solar Garden Table K333

Please read and retain these instructions for future reference

Instructions for Use

v002: 25/03/22

Type of Plastic	Polypropylene
Commonly used for	Microwaveable food containers, yoghurt pots, butter tubs, disposable plates and cups
Notes	Commonly recycled and collected from household recycling bins (packaging tape itself not recyclable but does not interfere with cardboard)

- At the end of the product's lifespan please check with your local council authorised household waste recycling centre for disposal.



*Calls cost 7 pence per minute plus your telephone company's network access charge

The Enterprise Department
Head Office: 11 Bridge Street
Bishop's Stortford, CM23 2JU
Tel: 0844 482 4400*
Fax: 01279 756 595
www.coopersofstortford.co.uk