

Dog with Solar Gazing Ball

K358 v001: 27/08/21

Please read and retain these instructions for future reference

GAINSBOROUGH
Garden & Wildlife

ALWAYS POSITION IN DIRECT SUNLIGHT



Dimensions

19 x 12.5 x 27.5cm

Material:

Polyresin

Contains 1.2V 200mAh Ni-MH AAA Rechargeable battery
LED lights not replaceable

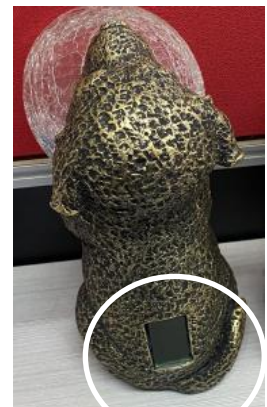
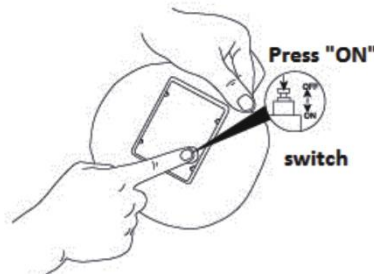
ASSEMBLY INSTRUCTIONS / INSTRUCTIONS FOR USE:

Unpack the components carefully. Please check all parts have been removed from the packaging.

Before using first time

Allow light to charge for at least 8-12 hours in full sunlight with the ON/OFF switch in the OFF position. The ON/OFF switch is located under the solar panel. Once the batteries are fully charged, set the ON/OFF switch to ON. Ideally align the solar panel to face the midday sun to maximize charging.

NOTE: The solar panel is located at the back of the dog.



Find an ideal Place for the Solar Light.

Place the solar light in an area where it will receive direct sunlight for at least 6 hours per day. The number of hours the light will illuminate is directly proportional to the hours of sunlight it receives. If the light is placed in a shaded area, it will not be able to fully charge and its illumination time will be limited. Do not place the light near other outdoor lighting like porch or streetlights. These may fool the sensor and keep the light from coming on, or cause it to turn off automatically

Caution: Install the lights where they will not create a trip hazard or cause an obstruction.

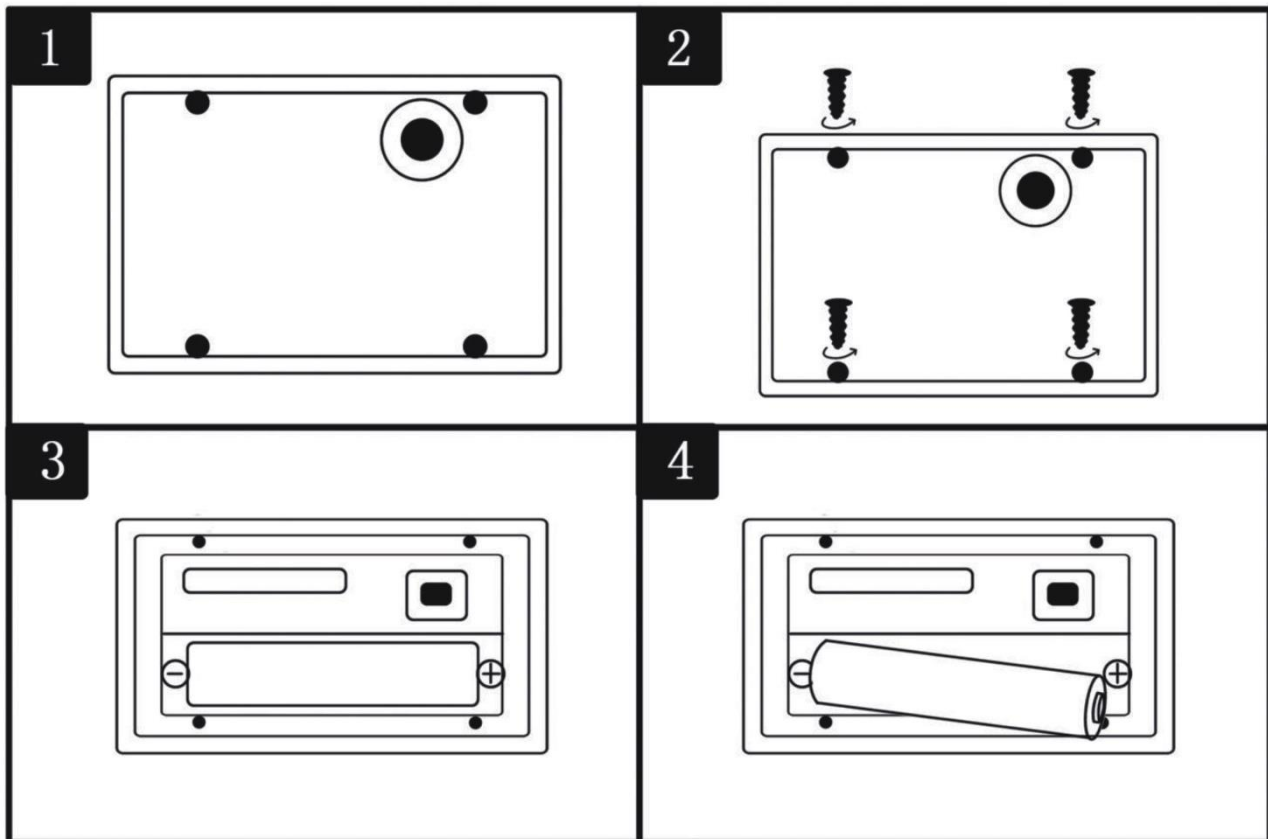
Replacing Battery

If the light stops working after it has been used for a long time (about 6-12 months), the battery may be beyond its lifespan.

*Calls cost 7 pence per minute plus your telephone company's network access charge

The Enterprise Department
Head Office: 11 Bridge Street
Bishop's Stortford, CM23 2JU
Tel: 0844 482 4400*
Fax: 01279 756 595
www.coopersofstortford.co.uk

- Push the switch to the off position.
- Using a screwdriver, remove the 4 screws and take out the batteries replacing them with a new 200 MAH Ni-MH 1.2V AAA rechargeable battery.
- Do not disconnect or remove any wires or tamper with any other connections inside or around the compartment.
- Replace the battery cover and screw into place.



Trouble shooting

If the solar light does not turn on automatically at night, please check the following:

- Is the switch in the ON position?
- Battery is not fully charged: Ensure the solar panel is positioned where it will receive plenty of direct sunlight. This item should not be placed in shady areas or the battery will not charge and the light will not function properly.
- Battery needs replacement: Replace the battery when the lights are no longer functional or are very dim during summer months.
- Loose battery: Sometimes the battery may become dislodged from the terminals and no contact is made. Make sure the battery is firmly in contact with the terminal at each end of the battery holder.

- Dirty solar panel: A dirty solar panel will not allow the battery to fully charge. Clean the solar panel with a damp cloth or paper towel.
- Light does not turn on: The light is designed to switch on when it turns dark, if there are strong light sources nearby then the light may be dim or not turn on.

Care and Maintenance Recommendations

1. Clean solar panel with a soft sponge every couple of weeks.
2. Make sure all connectors are still tight and no water getting in.
3. For long-term storage, charge the battery for 2-3 days before removing the battery pack and storing the light and battery in cool, dry environment.



BATTERIES

- Keep batteries away from children and pets.
- Do not mix used and new batteries.
- Remove the batteries if left for long periods.
- Never dispose of batteries in a fire.
- Battery disposal, spent or expired batteries must be properly disposed of and recycled in compliance with local regulations. For detailed information, contact your local authority.
- Follow the battery manufacturer's safety, usage, and disposal instructions.

DISPOSAL

- Coopers of Stortford use recyclable or recycled packaging where possible.
- Please dispose of all packaging, paper, cartons, packaging in accordance with your local recycling regulations.
- Plastics, polybags – this is made from the following recyclable plastic.



Code & Symbol	 PP	 PS
Type of Plastic	Polypropylene	Polystyrene
Commonly used for	Microwaveable food containers, yoghurt pots, butter tubs, disposable plates and cups	Insulation boxes, water cups, protective packaging inserts, take away containers
Notes	Commonly recycled and collected from household recycling bins (packaging tape itself not recyclable but does not interfere with cardboard)	Not commonly recycled but waste management centres will recycle it.

- At the end of the product's lifespan please check with your local council authorised household waste recycling centre for disposal.

