

Solar Cascading Log Water Feature with Robins

K431 v001: 29/09/21

Please read and retain these instructions for future reference

GAINSBOROUGH
Garden & Wildlife

ALWAYS POSITION IN DIRECT SUNLIGHT



Dimensions
41 x 28 x 56.5cm

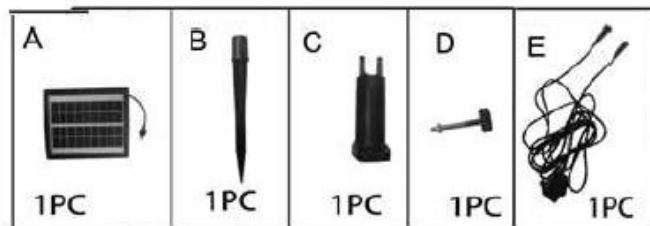
- SOLAR POWERED
- STAKE THE SOLAR PANEL IN THE SUN
- THE FOUNTAIN HAS ON OF BUTTON ON THE BACK OF THE SOLAR PANEL
- CHARGING TIME – 6- 8 HOURS
- WORKING TIME – 4-6 HOURS
- CHARMING ROBINS ON A LOG
- WITH 1 WARM WHITE LED (not replaceable)
- CABLE LENGTH TO SOLAR PANEL 3M
- PUMP POWER 200L/H
- UV AND FROST RESISTANT

Battery: 2 x LI-ON – 7.4V 1500MA (not replaceable)

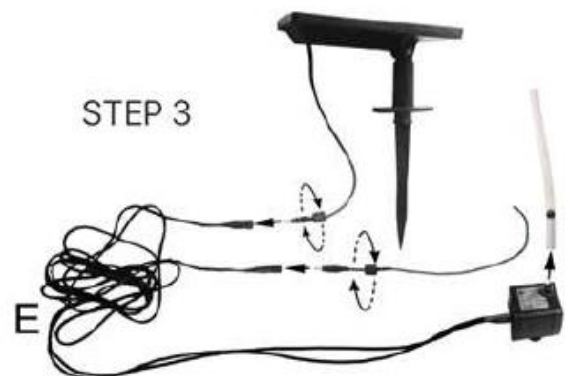
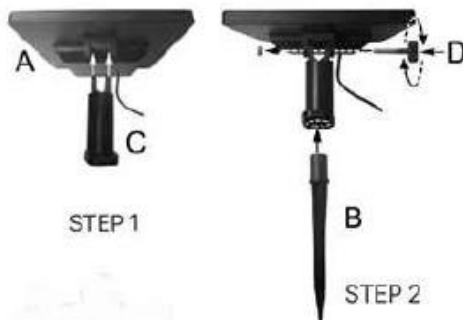
ASSEMBLY INSTRUCTIONS / INSTRUCTIONS FOR USE:

Unpack the components carefully. DOUBLE CHECK CONTENTS BEFORE DISCARDING THE PACKAGING TO PREVENT LOSING PARTS THAT ARE NEEDED FOR ASSEMBLY

Parts



Assembly instructions



*Calls cost 7 pence per minute plus your telephone company's network access charge

The Enterprise Department
Head Office: 11 Bridge Street
Bishop's Stortford, CM23 2JU
Tel: 0844 482 4400*
Fax: 01279 756 595
www.coopersofstortford.co.uk

To easily insert stakes into the ground, it is recommended to wet the ground first. To avoid damaging garden stakes when inserting into the ground, select a spot in soft, rock-free soil. Insert the base of the stake first then gently insert the rest of the stake into the base. DO NOT push directly against the solar cell or the ornament housing containing the actual LED light.

Find an ideal Place for the Solar Light.

Place the solar light in an area where it will receive direct sunlight for at least 8 hours per day. The number of hours the light will illuminate is directly proportional to the hours of sunlight it receives. If the light is placed in a shaded area, it will not be able to fully charge and its illumination time will be limited. Do not place the light near other outdoor lighting like porch or streetlights. These may fool the sensor and keep the light from coming on, or cause it to turn off automatically

INSTALLATION:

1. Attach the pump to the solar panel before use, plug the sprinkler head or hose into the outlet of the pump. Make sure the water level covers the pump but is lower than the sprinkler head.
2. Plug the power line of the pump into the plug of the solar panel, and then fasten.
3. Position the solar panel in full sun to optimally run the pump, the backup battery will be charged from the solar panel during normal operation and automatically run the pump without direct sunshine.
4. If required the pump can be run by the battery in times of low sunlight. Turn on the switch at located at the back of the solar panel, if the battery is fully charged the pump will start to work immediately.

CHARGING AND OPERATION

1. Turn the switch, which is located under the solar panel, to "ON" position and the battery will work automatically. Charge the solar product by placing it under direct sunlight for at least 8 hours. Recommend longer charging time for the first use. If the switch is "OFF" the battery will not work, solar panel ensures the pump works directly.
2. The light will work automatically.



HOW TO USE:

The pump/fountain function will work best when fully charged under direct sunlight. When there is no sun, the built-in batteries will power the fountain water and light for a minimum of a few hours.

Care and Maintenance Recommendations

1. Clean solar panel with a soft sponge every couple of weeks.
2. Make sure all connectors are still tight and no water getting in.
3. Keep the water clean during the summer keep topping up every 3 or 4 days with clean water.
4. Clean any pipes every month stop any build-up of algae which could put an extra pressure on your pump.
5. Take out any foreign body around the pump and keep clean solar product.
6. Always make sure there is enough water for the pump to work otherwise you could damage the pump.
7. Make sure you clean the pump on a regularly bases when you are cleaning face the solar panel face down on a towel this will stop the pump running or switch it off.
8. During the winter if you can bring it inside and give a good clean ready for next year.


BATTERIES

- Keep batteries away from children and pets.
- Do not mix used and new batteries.
- Remove the batteries if left for long periods.
- Never dispose of batteries in a fire.
- Battery disposal, spent or expired batteries must be properly disposed of and recycled in compliance with local regulations. For detailed information, contact your local authority.
- Follow the battery manufacturer’s safety, usage, and disposal instructions.

DISPOSAL

- Coopers of Stortford use recyclable or recycled packaging where possible.
- Please dispose of all packaging, paper, cartons, packaging in accordance with your local recycling regulations.
- Plastics, polybags – this is made from the following recyclable plastic.



Code & Symbol	 OTHER
Type of Plastic	Resin
Commonly used for	CD’s, crisp packets, various flexible packaging, baby bottles, sunglass lenses
Notes	Not often or widely recycled

- At the end of the product’s lifespan please check with your local council authorised household waste recycling centre for disposal.

