

# Solar Pumpkin Cottage

K753 v001: 23/02/22

Please read and retain these instructions for future reference

**GAINSBOROUGH**  
Garden & Wildlife

**ALWAYS POSITION IN DIRECT SUNLIGHT**



## Dimensions

H25 x W19.5 x D16.5cm

Material: Resin

- INTRICATELY DETAILED DESIGN
- INTEGRAL SOLAR PANEL – AMORPHOUS – LOCATED ON THE BACK
- NO WIRES
- AUTOMATICALLY ILLUMINATES AT DUSK
- WARMING AUTUMN GLOW
- 1 X WARM WHITE LED (NOT REPLACEABLE)
- AN IDEAL GARDEN DECORATION FOR THIS AUTUMN PERIOD PROVIDING A BIT OF FUN AND WARMTH TO YOUR GARDEN.
- CHARGING TIME – 6-8 HOURS
- WORKING TIME – 6-8 HOURS

BATTERY: 1.2V 200MAH NI-MH AA RECHARGEABLE BATTERY

## ASSEMBLY INSTRUCTIONS / INSTRUCTIONS FOR USE:

Unpack the components carefully. Please check all parts have been removed from the packaging.

### Find an ideal Place for the Solar Light.

Place the solar light in an area where it will receive direct sunlight for at least 8 hours per day. The number of hours the light will illuminate is directly proportional to the hours of sunlight it receives. If the light is placed in a shaded area, it will not be able to fully charge and its illumination time will be limited. Do not place the light near other outdoor lighting like porch or streetlights. These may fool the sensor and keep the light from coming on, or cause it to turn off automatically

### How to use the Solar Light

1. Prior to initial use, the solar unit should be exposed to sunlight for at least 8-12 hours to fully charge the battery.
2. Push the switch to the OFF position when charging for the first time.
3. Find a location in direct sunlight and generally free from cover or shade.

\*Calls cost 7 pence per minute plus your telephone company's network access charge

The Enterprise Department  
Head Office: 11 Bridge Street  
Bishop's Stortford, CM23 2JU  
Tel: 0844 482 4400\*  
Fax: 01279 756 595  
[www.coopersofstortford.co.uk](http://www.coopersofstortford.co.uk)

Once sufficiently charged push the switch button to the ON position.

4. At night the solar light will automatically turn on.
5. Ideally align the solar panel to face the midday sun to maximize charging.

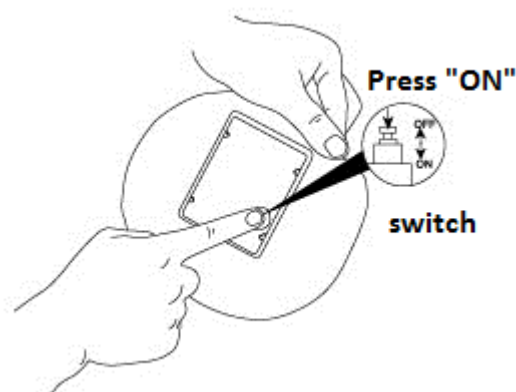


Fig. 1

## Cleaning

To maintain maximum illumination always keep the solar panel clean and free from dust and debris. If cleaning is required, please use a soft damp cloth or paper towel.

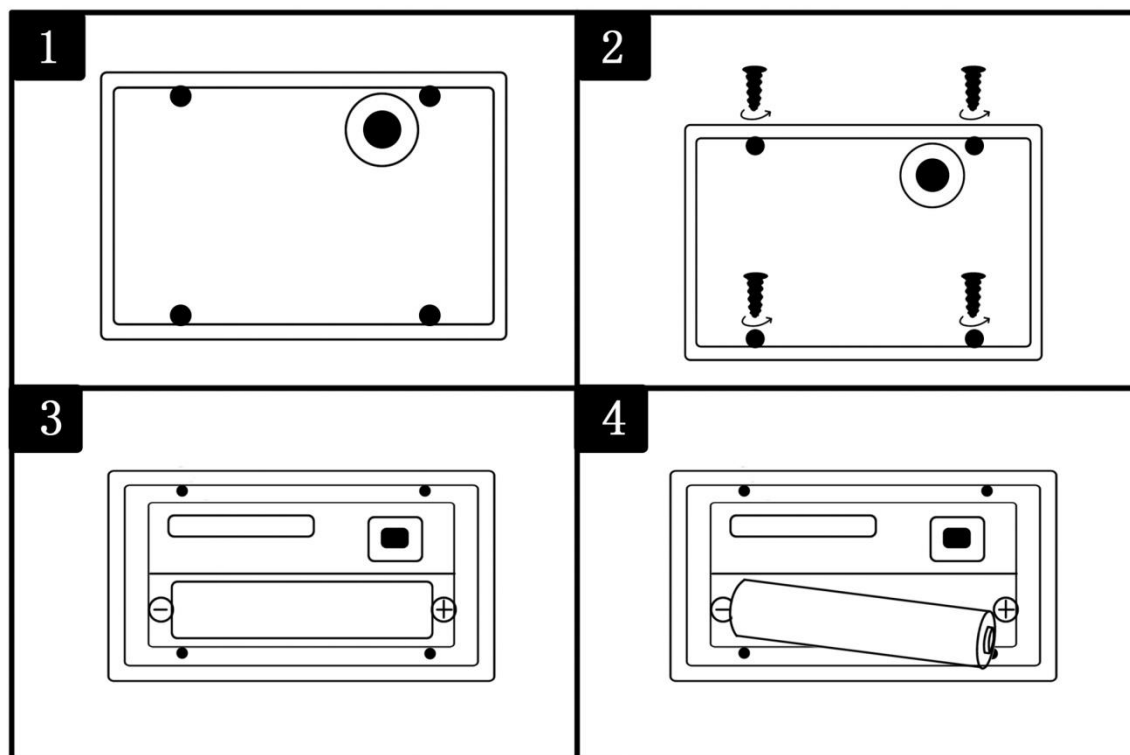
Never try to disassemble the solar light. The LED light is not replaceable.

For long-term storage, charge the battery for 2-3 days before removing the battery pack and storing the light and battery in a cool, dry environment

## Battery Replacement

The life of the rechargeable battery is approximately 6-12 months. When the light becomes dim or is no longer functional, it may be time to change the battery.

- Push the switch to the off position.
- Using a screwdriver, remove the 4 screws and take out the batteries replacing with a new 200 m AH Ni-MH 1.2V AA rechargeable battery.
- Do not replace with a normal alkaline battery.
- Do not disconnect or remove any wires or tamper with any other connections inside or around the compartment. See fig 2



- Replace the battery cover and screw into place.
- Allow light to charge for 8-12 hours in full sunlight with the ON/OFF switch in the Off position.

## Trouble shooting

If the solar light does not turn on automatically at night, please check the following;

- Is the switch in the on position?
- Battery is not fully charged: Ensure the solar panel is positioned where it will receive plenty of direct sunlight. This item should not be placed in shady areas or the battery will not charge and the light will not function properly.
- Battery needs replacement: Replace the battery when the lights are no longer functional or are very dim during summer months.
- Loose battery: Sometimes the battery may become dislodged from the terminals and no contact is made. Make sure the battery is firmly in contact the terminal at each end of the battery holder
- Dirty Solar panel: A dirty solar panel will not allow the battery to fully charge. Clean the solar panel with a damp cloth or paper towel.

- Light does not turn on: The light is designed to switch on when it turns dark, if there are strong light sources nearby then the lights may be dim or not turn on



## BATTERIES

- Keep batteries away from children and pets.
- Remove the batteries if left for long periods.
- Never dispose of batteries in a fire.
- Battery disposal, spent or expired batteries must be properly disposed of and recycled in compliance with local regulations. For detailed information, contact your local authority.
- Follow the battery manufacturer's safety, usage, and disposal instructions.

## DISPOSAL

- Coopers of Stortford use recyclable or recycled packaging where possible.
- Please dispose of all packaging, paper, cartons, packaging in accordance with your local recycling regulations.
- Plastics, polybags – Contains the following recyclable plastic.



Code & Symbol		
Type of Plastic	Polypropylene (bag, battery box)	Polystyrene (polyfoam)
Commonly used for	Microwaveable food containers, yoghurt pots, butter tubs, disposable plates and cups	Insulation boxes, water cups, protective packaging inserts, take away containers
Notes	Commonly recycled and collected from household recycling bins (packaging tape itself not recyclable but does not interfere with cardboard)	Not commonly recycled but waste management centres will recycle it.

- At the end of the product's lifespan please check with your local council authorised household waste recycling centre for disposal.

