

## Chirping Chicks Garden Ornament

Item codes: M179

### Instructions for Use

v002: 18/10/23

Please read and retain these instructions for future reference

**GAINSBOROUGH**  
Garden & Wildlife



#### Dimensions:

14x9x14.5cm

#### Material:

Polyresin

**ALWAYS USE ALKALINE BATTERIES.**

**DO NOT USE LITHIUM BATTERIES.**

Power details: 2 XLR44

Button Cell Compartment secure by Screw.

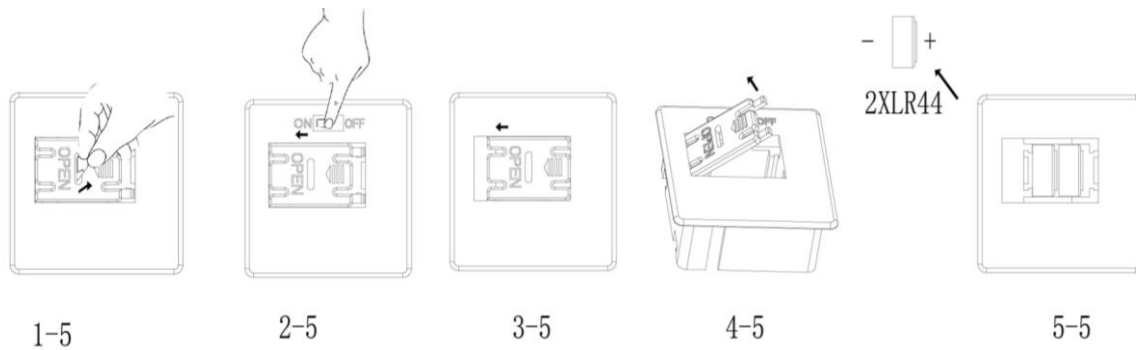
**Please read this instruction manual thoroughly before starting and ensure you are familiar with the operation of your new Chirping Chicks Garden Ornament.**

#### INSTRUCTIONS FOR USE:

Unpack the components carefully. Please check all parts have been removed from the packaging.

#### How to use the light:

1. Remove the insulation sheet.
2. Push the switch to the ON position.
3. to replace the batteries, push the battery cover to the left and open it.
4. Insert the 2x LR44 batteries
5. There is a built-in motion sensor which detects motion up to 2m away. When motion is detected, the chicks let off a cute chirping sound.
6. The chirping sound is only activated in the daytime but automatically turns off at night.



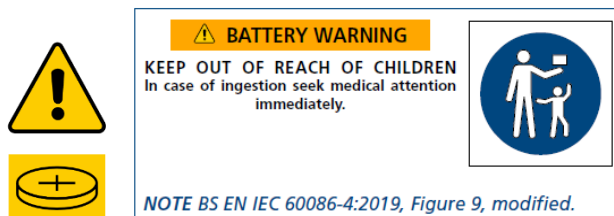
#### WARNINGS AND SAFETY INSTRUCTIONS:

WHEN USING ANY APPLIANCE, BASIC SAFETY PRECAUTIONS SHOULD ALWAYS BE FOLLOWED:

- READ ALL INSTRUCTIONS BEFORE USE.
- FOR DOMESTIC OUTDOOR USE.
- NOT FOR COMMERCIAL USE.
- BEFORE USE, CHECK THOROUGHLY FOR ANY DEFECTS AND DO NOT USE IF DEFECTS ARE FOUND. TAKE CARE NOT TO DROP THE APPLIANCE AS HEAVY IMPACTS MAY CAUSE INTERNAL DAMAGE.
- THE USE OF ANY ACCESORY OR ATTACHMENTS NOT RECOMMENDED BY COOPERS OF STORTFORD MAY CAUSE INJURIES AND INVALIDATE ANY WARRANTY YOU MAY HAVE.
- DO NOT PLACE ON OR NEAR HEAT SOURCES.
- DO NOT COVER THE ITEM IN ANY WAY WHEN IN USE AS THIS MAY CAUSE OVERHEATING.
- DO NOT USE THIS APPLIANCE FOR ANYT OTHER USE THAN THE INTENDED USE IT IS DESIGNED FOR.

#### BATTERIES:

- CONTAINS BUTTON CELLS



#### BATTERY SAFETY:

- BATTERY WARNING: KEEP OUT OF REACH OF CHILDREN. IF SWALLOWED OR PLACED INSIDE ANY PART OF THE BODY SEEK IMMEDIATE MEDICAL ATTENTION.
- INSTALL BATTERIES IN ACCORDANCE WITH ITS POLARITY SYMBOLS. DO NOT FIT BUTTON CELLS IN REVERSE.
- ENSURE THE BATTERY COMPARMENT IS SECURED BY A SCREW OR SECURING DEVICE.
- IF THE BATTERY COMPARTMENT (DOES NOT CLOSE SECURELY, STOP USING THE PRODUCT AND KEEP IT AWAY FROM CHILDREN.
- DO NOT SHORT CIRCUIT THE BATTERY TERMINALS.
- REMOVE THE BATTERIES IF LEFT FOR LONG PERIODS.
- KEEP BATTERIES AWAY FROM CHILDREN AND PETS.
- DO NOT MIX USED AND NEW BUTTON CELLS
- NEVER DISPOSE OF BUTTON CELLS OR BATTERIES IN A FIRE.

#### BATTERY DISPOSAL:

- SPENT OR EXPIRED BUTTON CELLS MUST BE DISPOSED SAFELY AWAY FROM CHILDREN ACCESS AND RECYCLED IN COMPLIANCE WITH YOUR LOCAL AUTHORITY REGULATIONS.
- FOLLOW THE BATTERY MANUFACTURER'S SAFETY, USAGE, AND DISPOSAL INSTRUCTIONS.

#### CARE AND CLEANING INSTRUCTIONS

- ALWAYS SWITCH OFF AND REMOVE BATTERIES BEFORE CLEANING.
- DO NOT IMMERSE IN WATER.
- DO NOT USE ABRASIVE CLEANERS OR SHARP UTENSILS TO CLEAN THIS APPLIANCE.
- WIPE SURFACES WITH A SOFT DRY CLOTH. DRY THOROUGHLY BEFORE FURTHER USE.
- STORE THE APPLIANCE IN A COOL, DRY PLACE.
- 

#### DISPOSAL

- Coopers of Stortford use recyclable or recycled packaging where possible.
- Please dispose of all packaging, paper, cartons in accordance with your local authority recycling regulations.
- At the end of the product's lifespan please check with your local council authorised household waste recycling centre for disposal.



Plastics, polybags – this is made from the following recyclable plastic:

Code & Symbol	A recycling symbol with the number 5 inside, and the letters PP below it.	A recycling symbol with the number 6 inside, and the letters PS below it.
Type of Plastic	Polypropylene	Polystyrene



#### CUSTOMER SERVICES:

Distributed by / Verteilt durch / Distribué par.

UK: The Enterprise Department Ltd.  
11 Bridge Street, Bishops Stortford, Herts, UK, CM23 2JU  
Tel: 0330 331 0300

NI/EU:  
D.S.B. LD, 160 Bd. de Fourmies, 59100 Roubaix, France  
Tel: (+44) 1279 701269