

Inner Ear Digital Hearing Amplifier

Item No: P268

Instructions for Use

v001: 17/10/24

Please read and retain these instructions for future reference

Java

wellness



Power Details: Battery Type & details: Lithium Battery 1.5mAh included.
Voltage details: DC 3.7V

Accessories: Wax guard stick* 8pcs;
earplugs* 18pcs;
screwdriver* 2pcs;
USB* 1pc;
cleaning brush* 2pcs

Please read this instruction manual thoroughly before starting and ensure you are familiar with the operation of your new INNER EAR DIGITAL HEARING AMPLIFIER.

User Instructions here

Replace The Earplugs:

Choose the right type and size for the first use, then put the earplugs on the hearing device. we provide 3 types earplugs with S/M/L sizes for your option.



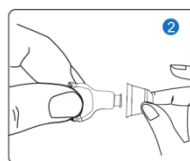
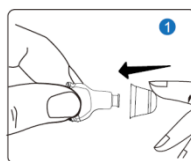
S



M



L



Note:

The right-sized earplugs that can reduce howling sound.

When attaching an earplug, be sure to press with enough force that you feel a pop or click when it connects. Check to make sure the earplug is not pressed flat against the hearing device because this can block the sound receiver. The earplug will connect firmly and click into place but still leave a slight amount of space between the tip of the hearing device and the earplug itself.

Power Switch:

To turn your device on, turn the power switch to the side labelled “ON” .



ON: Power on.

To Turn your device off, turn the power switch to the side labelled “OFF”



OFF: Power off.

Volume Control:

Adjust the volume by a screwdriver:

1. Turn volume up by clockwise rotation.
2. Turn volume down by anticlockwise rotation.

Remark:

Keep the volume at low level when you wear it first time. Then you can increase the volume slowly to find the best sound level.

Inserting Into Ear:

Use your thumb and forefinger to hold the hearing device against the ear canal and gently push it in. With the other hand, pull the auricle back to make it easier for you to wear the hearing device. Use your forefinger to move up and down and gently press your mouth open and close several times, helps determine if the hearing device is in place.

Cleaning Hearing Device:

Locate the cleaning brush from the accessory box. Remove the earplug from your hearing device. Use the cleaning brush to remove wax, dirt or any debris from both the earplug and the device itself. In addition, in order to prevent your hearing device from getting wet and unable to charge due to prolonged wear, It is recommend that you clean the charging port on your hearing device once a week with a dry and soft cloth. Only use the brush side of the tool as the other side may damage the hearing device.

How to charge the charging case:

Connect the USB cable to the back of the charging case ,then plug the charger into power outlet. After charging the charging case, the charging case will support up to 3 additional wireless charging cycles for the hearing device.

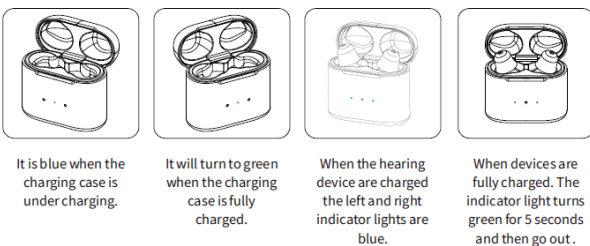
How to put the hearing device correctly:

When the volume is low or there is no sound, it may be out of power. please charge it in time. Please turn your hearing device off before place it in the charging case to charge. Make sure the device is properly placed in the charging case.

How to charge the hearing device:

Blue light=Units are properly connected and charging.

Green light=The device is fully charged.

**Remove the hearing device:**

Hold the hearing device with your thumb and index finger and gently pull it out of the ear canal.

Note:

1. While removing the hearing device, open and close the mouth and pull the auricle back with the other hand. This makes it easier to remove the hearing device.
2. Wear and remove hearing device need a lot of practice. Hearing devices are very delicate items. Falling can cause damage to hearing device, so it is best to wear and remove hearing device in a soft environment on the surface.
3. Please don't use the hearing device at a high volume for a long time. It will damage your hearing.
4. Please maintain the product all the time in order to avoid the ear plug and microphone opening being blocked by outer objects.
5. Please don't use whilst showering, swimming, raining or wet environment, please don't expose the hearing device under sunshine get close to a stove or other heat sources.
6. Please protect the hearing device carefully and avoid dropping it on the floor.
7. Please use the specified battery and charger exclusively developed for the hearing device.
8. Do not disassemble or modify the hearing device.
9. Keep the hearing device away from the children.

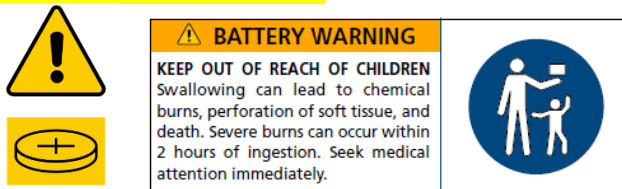
WARNINGS AND SAFETY INSTRUCTIONS:

WHEN USING ANY APPLIANCE, BASIC SAFETY PRECAUTIONS SHOULD ALWAYS BE FOLLOWED:

- READ ALL INSTRUCTIONS BEFORE USE.
- FOR DOMESTIC INDOOR / OUTDOOR USE.
- NOT FOR COMMERCIAL USE.
- BEFORE USE, CHECK THOROUGHLY FOR ANY DEFECTS AND DO NOT USE IF DEFECTS ARE FOUND. TAKE CARE NOT TO DROP THE APPLIANCE AS HEAVY IMPACTS MAY CAUSE INTERNAL DAMAGE.
- THE USE OF ANY ACCESSORY OR ATTACHMENTS NOT RECOMMENDED BY COOPERS OF STORTFORD MAY CAUSE INJURIES AND INVALIDATE ANY WARRANTY YOU MAY HAVE.
- DO NOT PLACE ON OR NEAR HEAT SOURCES.
- DO NOT COVER THE ITEM IN ANY WAY WHEN IN USE AS THIS MAY CAUSE OVERHEATING.
- DO NOT USE THIS APPLIANCE FOR ANY OTHER USE THAN THE INTENDED USE IT IS DESIGNED FOR.
- DO NOT LEAVE SWITCHED ON OR UNATTENDED.

BATTERIES

- **CONTAINS BUTTON CELLS**



- **BATTERY WARNING: KEEP OUT OF REACH OF CHILDREN. IF SWALLOWED OR PLACED INSIDE ANY PART OF THE BODY SEEK IMMEDIATE MEDICAL ATTENTION.**
- INSTALL BATTERIES IN ACCORDANCE WITH ITS POLARITY SYMBOLS. DO NOT FIT BATTERIES IN REVERSE.
- DO NOT SHORT CIRCUIT THE BATTERY TERMINALS.
- REMOVE THE BATTERIES IF LEFT FOR LONG PERIODS.
- **KEEP BATTERIES AWAY FROM CHILDREN AND PETS.**
- DO NOT MIX USED AND NEW BATTERIES.
- **NEVER DISPOSE OF BATTERIES IN A FIRE.**
- BATTERY DISPOSAL, SPENT OR EXPIRED BATTERIES MUST BE DISPOSED OF AND RECYCLED IN COMPLIANCE WITH YOUR LOCAL AUTHORITY REGULATIONS.
- FOLLOW THE BATTERY MANUFACTURER'S SAFETY, USAGE, AND DISPOSAL INSTRUCTIONS.

CARE AND CLEANING INSTRUCTIONS

- ALWAYS SWITCH OFF AND REMOVE BATTERIES BEFORE CLEANING.
- DO NOT IMMERSE IN WATER.
- DO NOT USE ABRASIVE CLEANERS OR SHARP UTENSILS TO CLEAN THIS APPLIANCE.
- WIPE SURFACES WITH A SOFT DRY CLOTH. DRY THOROUGHLY BEFORE FURTHER USE.
- STORE THE APPLIANCE IN A COOL, DRY PLACE.


BATTERY DISPOSAL

- SPENT OR EXPIRED BUTTON CELLS MUST BE DISPOSED SAFELY AWAY FROM CHILDREN ACCESS AND RECYCLED IN COMPLIANCE WITH YOUR LOCAL AUTHORITY REGULATIONS.
- FOLLOW THE BATTERY MANUFACTURER'S SAFETY, USAGE, AND DISPOSAL INSTRUCTIONS.

DISPOSAL

- Coopers of Stortford use recyclable or recycled packaging where possible.
- Please dispose of all packaging, paper, cartons in accordance with your local authority recycling regulations.
- At the end of the product's lifespan please check with your local council authorised household waste recycling centre for disposal.
- Plastics, polybags – this is made from the following recyclable plastic.



Code & Symbol	 OTHER
Type of Plastic	Please Specify (includes ABS, Nylon)

Distributed by / Verteilt durch / Distribué par.

UK:

The Enterprise Department Ltd.

11 Bridge Street, Bishops Stortford

Herts, UK, CM23 2JU

Tel: 0330 331 0300

NI/EU:

D.S.B. LD, 160 Bd. de Fourmies, 59100 Roubaix, France

Tel: (+44) 1279 701269

DE/FR/CZ/SK:

hergestellt für 3Pagen

Sankt-Joeris-Strasse 16-28

53477 Alsdorf

Tel: +49(0)2404/980-204

kontakt@3pagen.de

