

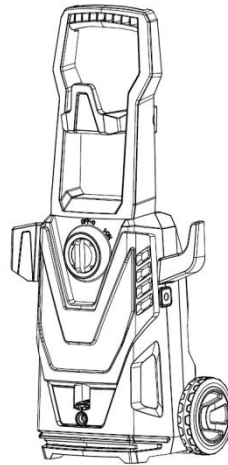
1600W High Pressure Washer

Item No: P291

Instructions for Use

v001: 01/10/24

Please read and retain these instructions for future reference

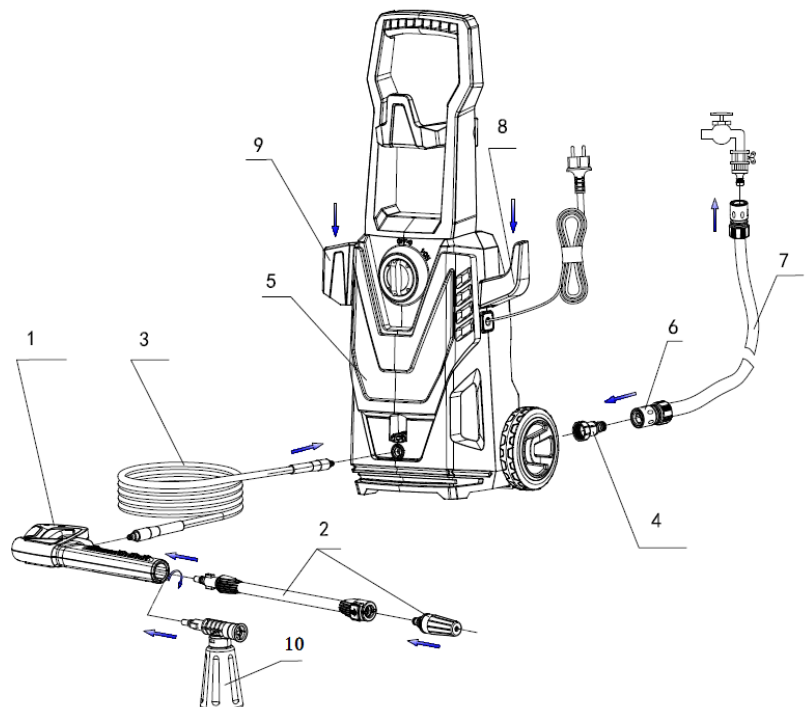


Power Details:

Rated pressure	80Bar
Permissible pressure (max.)	120Bar
Rated flow	5.5L/Min
Max flow	7.0L/Min
Voltage/Frequency	240V / 50Hz
Rated power input	1600 W
Degree of Protection	IPX5
Protection class	II

Accessories:

1. Gun Handle
2. Gun Lance + Spray Nozzle
3. High Pressure Hose
4. Water Inlet Connector
5. Pressure Washer
6. Quick Connector
7. Water Inlet Hose (not included)
8. Cable Hook
9. Gun Hook
10. Detergent Bottle



Please read this instruction manual thoroughly before starting and ensure you are familiar with the operation of your new HIGH PRESSURE WASHER.

SAFETY STATEMENTS



BEFORE USING THE PRODUCT, FAMILIARISE YOURSELF WITH ALL OF THE SAFETY INFORMATION AND INSTRUCTIONS FOR USE!

WHEN PASSING THIS PRODUCT ON TO OTHERS, ALSO INCLUDE ALL THE DOCUMENTS!

In the case of damage resulting from non-compliance with these operating instructions the guarantee claim becomes invalid! No liability is accepted for consequential damage! In the case of material damage or personal injury caused by incorrect handling or noncompliance with the safety instructions, no liability is accepted!



WARNING!

DANGER OF DEATH AND ACCIDENTS FOR TODDLERS AND CHILDREN!

Never leave children unsupervised with the packaging material. The packaging material represents a danger of suffocation. Children frequently underestimate the dangers. Keep children away from the product and packaging material at all times.



WARNING!

This product is not a toy for children! Children are not aware of the dangers associated with handling electrical products.

This product shall not be used by children from 0 year to 8 years.

This product can be used by children aged from 8 years and above if they are continuously supervised. This product can be used by people with reduced physical, sensory or mental capabilities or lack of experience and knowledge if they have been given supervision or instruction concerning use of the product in a safe way and understand the hazards involved.

Keep the product and its power cord out of reach of children aged less than 8 years.

Cleaning and user maintenance shall not be made by children.

Children shall not play with the product.

Safety Rules

Safety “Must Notes”

1. DO NOT use the appliance with inflammable or toxic liquids, or any products which are not compatible with the correct operation of the appliance. **EXPLOSION OR POISONING HAZARD**
2. DO NOT direct the water jet towards the unit itself, electrical parts or towards other electrical equipment. **ELECTRIC SHOCK HAZARD**
3. DO NOT direct the water jet towards people or animals. **INJURY HAZARD**
4. DO NOT touch the plug and/or socket with wet hands. **ELECTRIC SHOCK HAZARD**
5. DO NOT allow children or incompetent persons to use the appliance. **INJURY HAZARD**
6. DO NOT use the appliance outdoors in case of rain. **SHORT CIRCUIT HAZARD**
7. DO NOT use the appliance if the electrical cable is damaged. **ELECTRIC SHOCK AND SHORT CIRCUIT HAZARD**
8. DO NOT use the appliance if some important components like electrical cable, high pressure hose, gun and safety devices etc are damaged. **EXPLOSION AND ELECTRIC SHOCK HAZARD**
9. DO NOT jam the trigger in the opening position. **ACCIDENT HAZARD**
10. Check the data plate attached to the appliance. If not available, please contact the dealer. Do Not use the appliance without data plate because it's not sure safe or dangerous.
11. DO NOT tamper with or adjust the setting of safety valve or the safety devices. **EXPLOSION HAZARD**
12. DO NOT alter the original diameter of the spray head nozzle and other operation setting;
13. Make sure that the high pressure hose are free of being pressed by car or other heavy objects or cut by sharp objects;
14. DO NOT move the appliance by pulling electrical cable. **SHORT CIRCUIT AND ELECTRIC SHOCK HAZARD**
15. DO NOT leave the appliance unattended **ACCIDENT HAZARD**
16. DO NOT move the appliance by pulling high pressure hose. **EXPLOSION HAZARD**
17. When directed towards tyres, tyre valves or other pressurized components, the high pressure jet is potentially dangerous. Do not use the rotating nozzle kit, and always keep the jet at a distance of at least 30 cm during cleaning. **EXPLOSION HAZARD**
18. DO NOT use this appliance to clean fragile objects. **DAMAGE HAZARD**
19. Check that the electrical supply voltage and frequency correspond to those specified on the appliance data plate.
20. The appliance should only be connected to a mains power supply equipped with an adequate earth connection.
21. DO NOT use the appliance after drinking alcohol, taking medicine or being tired;
22. DO NOT direct the jet towards the not strong wall to avoid damage and danger;

23. Use only extension electrical cable with waterproof plug and socket;
24. Connecting or replace plug and electrical cable MUST be carried out by qualified staff;
25. DO NOT pull fiercely when discharging the plug;
26. Electrical cable should be far away from fire and sharp object;
27. Cut the power supply immediately in case of breakdown or stop and find out the reason before re-start the appliance;
28. To be sure the appliance standing on dry surface.

Safety “Musts”

1. All electrical conductors MUST BE PROTECTED against the water jet. **SHORT CIRCUIT HAZARD**
2. The appliance MUST ONLY BE CONNECTED to an adequate power supply in compliance with all applicable regulations. **ELECTRIC SHOCK HAZARD**
Use of a safety residual current circuit-breaker (R.C.C.B) will provide additional protection for the operator;

Appliance without plug MUST be installed by qualified staff;

Use only authorized electrical extension leads with suitable conductor gauge.
3. High pressure may cause parts to rebound: wear all the protective clothing and equipment needed to ensure the operator’s safety. **INJURY HAZARD**
4. Plug MUST be pulled out after shutting the appliance or the appliance might start automatically or burn itself;
5. Holding the gun firmly before triggering it. **INJURY HAZARD**
6. COMPLY WITH the requirements of the local water supply company. According to EN 12729(BA), the appliance may only be connected to the mains drinking water supply if a backflow preventer valve with drain facility is installed in the supply hose. **CONTAMINATION HAZARD**
7. Maintenance and/or repair of electrical components MUST be carried out by qualified staff. **ACCIDENT HAZARD**
8. Shut down the appliance, cut power supply and water supply. Then, discharge the residual pressure by triggering the gun before disconnecting the unit hose. **INJURY HAZARD**
9. Before using the appliance, CHECK every time that the screws are fully tightened and that there are no broken or worn parts. **ACCIDENT HAZARD**
10. ONLY USE detergents which will NOT corrode the coating materials of the high pressure hose/electrical cable. **EXPLOSION AND ELECTRIC SHOCK HAZARD**
11. ENSURE that all people or animals keep a minimum distance of 16yd. (15M) away. **INJURY HAZARD**
12. The unit should STAND when it’s working.

13. This appliance can NOT be stored in damp environment;
14. When stopping the appliance, shut the appliance's switch before pulling plug out;
15. Use only original or manufacturer approved spare parts for safety sake
16. Total Stop (motor stops when trigger released) does NOT always keep effective and the appliance can NOT be at Total Stop for long time. If ineffective (for inner seal damaged, local voltage too low etc), MUST turn off the switch to stop the machine during working;

SAFETY "MUST KNOWS"

Caution – Danger!

1. **Do not tamper with or adjust the safety valve setting.**

Safety valve and/or pressure limiting valve.

The safety valve is also a pressure limiting valve.

When the gun trigger is released, the valve opens and the water recirculates through the pump inlet or is discharged onto the ground.

2. **Safety catch (see Connection of gun and hose)**

Prevent accidental spraying of water.

3. **Air outlet on plastic case and it should NOT be blocked during operation, or fire or electric shock hazard is possible**

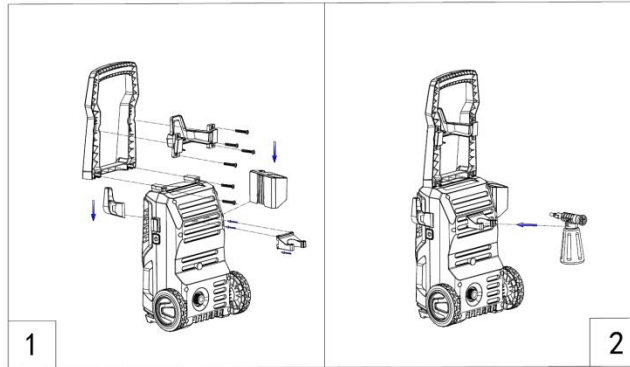
Use The Steps

1. Stand the machine up, placed on a flat ground.
2. Check the water entry filter to make sure it is free of blockage.
3. Connect the lance onto the gun handle.(appliance stops)
4. Connect the gun with the high pressure hose.
5. Loosen the high pressure hose to avoid twist.
6. Connect the hose onto the water output exit
7. Connect the water supply hose to the water entry of the machine.
8. Connect another end of the supply hose to water source.
9. Press the gun trigger and turn on the water tap to expel the air inside the machine.
10. Plug in and turn on the machine.
11. Turn the nozzle until the water stream is in a shape you want.
12. After use, turn off the water tap, and then the switch. Finally plug out.

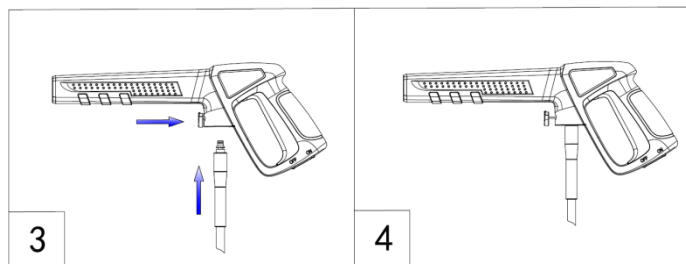
Assembly before operation

Please read the below Operation Instruction carefully and follow it to avoid any problems when installing and operating the appliance. Please go to the dealer for exchange if assembly fails for not-matching accessories.

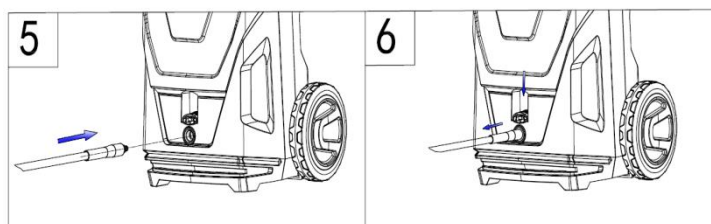
1. Fixing the hook and handle to the machine with attached screw in plastic bag. See figures 1 and 2



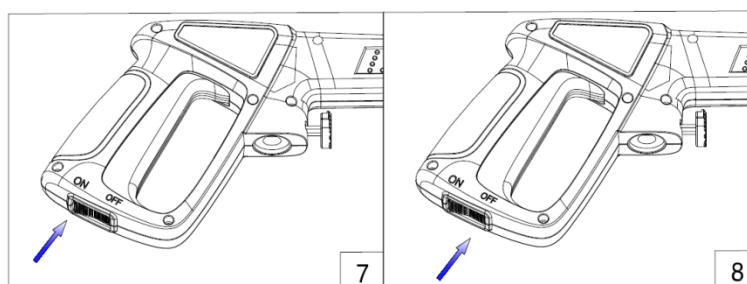
2. Attach the high pressure hose to the trigger gun . See figures 3 and 4



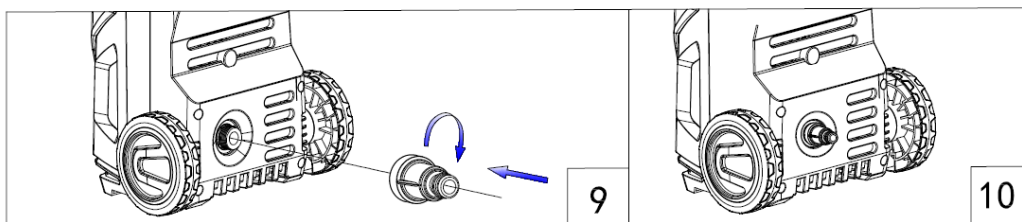
3. Attach the high pressure hose to machine.. See figures 5 and 6.



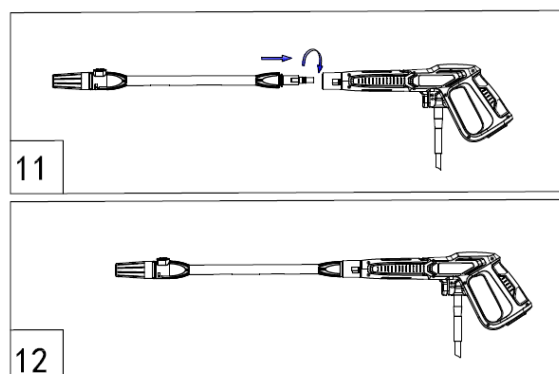
4. Locking device on trigger gun : The trigger gun features a locking device. When the knob is activated, the trigger gun cannot be operated.. See figures 7 and 8.



5. Screw the water inlet coupling tight on to the water inlet Note: The inlet filter always be fitted in the water inlet pipe to filter out sand, lime stone and other impurities as these will damage the pump valves. See figure 9 and 10.

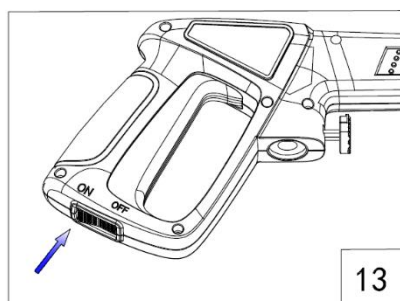


6. Connecting the lance to the gun handle. See figures 11 and 12.



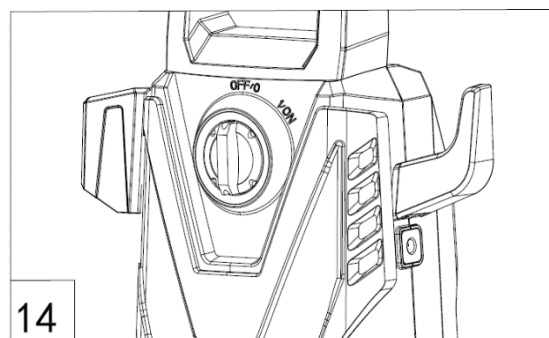
7. Turning the tap on, making sure that the tap is fully open.

8. Releasing the trigger lock. See figure 13.



9. Triggering the gun to expel the air in the unit before its working.

10. Turning the On/Off switch to the Off position. See figure 14.



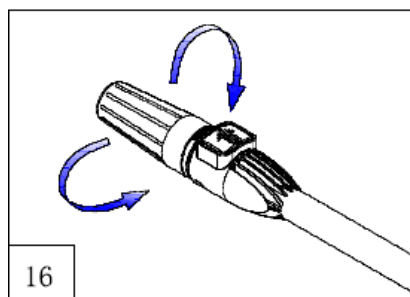
11. Putting plug into socket of main electric power.

Now, the pressure washer is ready for use.

Adjusting the spray

The lance nozzle is adjustable to allow you to adjust the spray shape from linear shape to fan-shape. To adjust the nozzle, proceed as follows :

1. Hold the lance in one hand.
2. Turn the nozzle with the other hand. See figure 16.



PLUG WIRING (UK & IRELAND)

This appliance is supplied with a mains adaptor/charger with BS1363 plug pins.

DO NOT use If the socket outlets in your home or office are not suitable for this product's mains adaptor/ charger plug pins. Attempts to insert the mains adaptor/charger into the wrong socket is likely to cause electric hazard or damage.

DO NOT use with any other mains transformer/charger than the one that is supplied with this product.

Steps of storage

1. Switch the appliance off (OFF)
2. Turn off the water supply tap
3. Remove the plug from the socket
4. Discharge the residual pressure from the gun until all the water has come out of the nozzle
5. Drain and wash out the detergent tank at the end of the working session. To wash out the tank, use clean water instead of the detergent
6. Engage the gun safety catch.

Environment of storage

1. The temperature should be 0°C-60°C
2. The appliance can NOT be put in damp environment for long time
3. Treat the appliance with non-corrosive, non-toxic antifreeze before storing it away for winter

Trouble shooting

Symptom	CAUSE	Recommended action
Machine refuses to start	Machine not plugged in	Plug in machine.
	Defective socket	Try another socket.
	Fuse has blown	Replace fuse. Switch off other machines.
	Defective extension cable	Try without the extension cable.
Fluctuating pressur	Pump is sucking air	Check that hoses and connections are airtight.
	Valves dirty, worn out or stuck	Contact your nearest service centre.
	Water supply not sufficient	Increase water pressure, check for blockage of garden hose and/or change to bigger hose.
	Pump seals worn	Contact your nearest service centre.
Machine stops	Fuse has blown	Replace fuse. Switch off other machines.
	Incorrect mains voltage	Check that the mains voltage corresponds to specification on the name plate.
	Thermal sensor activated	Leave the machine for 5 minutes to cool down.
	Nozzle partially blocked	Clean the nozzle with a needle and by spraying water backwards through the nozzle.
Fuse blows	Fuse too small	Change to an installation higher than the amperage consumption of the machine.
	Amperage increase	Try without the extension cable.
Machine pulsating	Air in inlet hose/pump	Allow machine to run with open trigger until regular working pressure resumes.
	Inadequate supply of mains water specifications required	Increase water pressure, check for blockage of garden hose and/or change to bigger hose.
	Nozzle partially blocked	Clean the nozzle with a needle and by spraying water backwards through the nozzle.
	Water filter blocked	Clean the filter.
	Hose kinked	Straighten out hose.
Machine often starts and stops by itself	Pump and/or trigger gun is leaking	Contact your nearest service centre.
	No water supply	Connect inlet water.
Machine starts but no water comes out	Water filter blocked	Clean the filter
	Nozzle blocked	Clean the nozzle with a needle and by spraying water backwards through the nozzle


CARE AND CLEANING INSTRUCTIONS

- Always switch off and unplug before cleaning.
- Do NOT immerse in water. Risk of electric shock.
- Do NOT use abrasive cleaners or sharp utensils to clean this appliance.
- Wipe surfaces with a soft dry cloth.
- Allow to dry thoroughly before further use.
- Store the appliance in a cool, dry place.

DISPOSAL

- Coopers of Stortford use recyclable or recycled packaging where possible.
- Please dispose of all packaging, paper, cartons in accordance with your local authority recycling regulations.
- At the end of the product's lifespan please check with your local council authorised household waste recycling centre for disposal.
- Plastics, polybags – this is made from the following recyclable plastic.



Code & Symbol	 LDPE
Type of Plastic	Low Density Polyethylene

- At the end of the product's lifespan please check with your local council authorised household waste recycling centre for disposal.

Distributed by / Verteilt durch / Distribué par.

UK:

The Enterprise Department Ltd.
11 Bridge Street, Bishops Stortford
Herts, UK, CM23 2JU

Tel: 0330 331 0300

NI/EU:

D.S.B. LD, 160 Bd. de Fourmies, 59100 Roubaix, France
Tel: (+44) 1279 701269

DE/FR/CZ/SK:

hergestellt für 3Pagen
Sankt-Joeris-Strasse 16-28
52477 Alsdorf
Tel: +49(0)2404/980-204

kontakt@3pagen.de

UK
CA

CE

