



Technical Details:

- Operates on 12 Volt DC only.
- Measurements: L22xW14xD7.5cm

BEFORE USE

The air compressor is a multifunction compressor designed for cars, motorcycles, bicycles, rafts, air mattresses, and sports balls.

Read the instructions carefully before use and retain for future reference.

Power required: 12volts, 10 amps DC. (NB – the cigarette lighter/power source must have a fuse of 15A or more). The compressor is designed for occasional use only.

Operation over an extended period of time will overheat the unit and damage the compressor. Do not use continuously for more than 10 minutes at a time. If the unit becomes hot or sluggish, stop immediately and allow to cool for at least 30 minutes.

A 12v battery charger may be used to power the item but it must be rated at least 15 amps or more to avoid damage. Not for use on high pressure items such as lorry or tractor tyres.

OPERATION

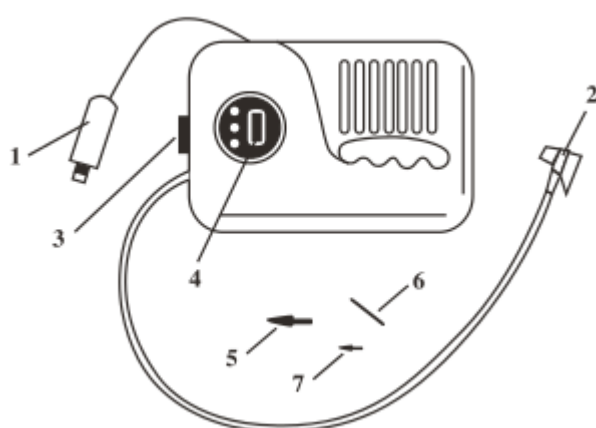
1. Select an adaptor if necessary for your article.
2. Check the articles user manual for the correct pressure to inflate to.
3. Place the hose end valve onto the valve of your item ensuring a good connection is made. Close the thumb latch.
4. Plug the power cord into the cigarette lighter or power source of your car.
Turn on your car.

Caution: Compressor will not start work if your required/setting pressure is lower than the pressure in your tire/equipment.

Unit switch for 4 types: PSI/BAR/KPA/Kg/cm²

Press "-" to lower your required pressure

Press "+" to add your required pressure



PARTS DESCRIPTION

Item #	Name
1.	12 Volt Plug
2.	Valve/Tyre Chuck
3.	Compressor Power Switch
4.	Pressure Gauge
5.	Mattress Adaptor
6.	Ball Adaptor
7.	Woods valve adaptor

I : ON
O : OFF

OPERATION (continued)

- Press the unit button (the left hand button – this may be marked M) to choose the measuring unit required: press once for PSI, twice for BAR, three times for KPA and four times for Kg.cm².
- The LCD display will show the current pressure reading of your article.
- Press the +/- buttons to set the required pressure. Wait 3-5 seconds until display stops flashing.
- Press the on switch of the compressor.
- The compressor will then activate.
- When the required pressure is reached, the compressor will continue for a few seconds and then stop. Press the off switch and unplug the unit.

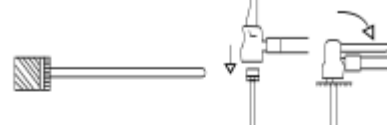
Important information: The Digital Automatic Air Compressor will vibrate vigorously in use. This is intentional and no cause for concern. The vibration will not damage either the product itself or your tyres.

Caution: Compressor will not start work if your required/setting pressure is lower than the pressure in your tire/equipment.
Compressor will lose your setting if power supply is cut off while display is still flashing;
Compressor will not start work if display is still flashing;
Start unit on high pressure initially may damage the unit for high pressure requires higher current to start the motor.
Any short-circuit of product may damage the unit.

To inflate sport equipment:

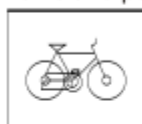
Ball:

1. Insert the Ball Adaptor (6) into the valve/tyre chuck (2) and push down the valve lock lever (2) to secure connection.
2. Press adaptor's needle (6) into ball carefully.
3. Follow compressor operation steps.



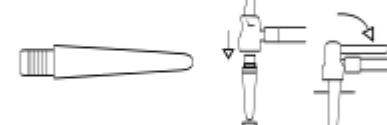
Bicycle Tyre:

1. Connect valve/tyre chuck (2) to bicycle tyre air valve and push down the valve lock lever (2) to secure connection.
2. Follow compressor operation steps.



Mattress/Raft:

1. Insert the Mattress Adaptor (5) into the valve/tyre chuck (2) and push down the valve lock lever (2) to secure connection.
2. Press adaptor's needle into mattress/raft carefully.
3. Follow compressor operation steps.



Typical Inflation Pressure

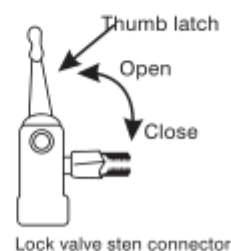
Avoid overinflation. NEVER EXCEED RECOMMENDED PRESSURE.
The item being inflated may burst and cause serious injury.

Auto Tires	PSI
	24 ~ 32

Please consult your owner's manual for a more exact pressure rating.

Shocks Absorber	PSI
Normal Load	40
Heavy Load	90

Bicycle Tires	PSI
	35 ~ 40
Other Inflatables	PSI
Football	13
Basketball	9
Volleyball	5
Lawn Tractor Tire	22
Boat (2 man)	Firm
Mattress	Firm



CAUTION: Soft inflatable material items will not have existing pressure reading. You must be careful of over inflating.

TROUBLE SHOOTING

Compressor does not start or blows fuses

- Push the power plug firmly into the power source and twist round to ensure a good connection.
- Check all parts for dirt and clean where necessary.
- Check vehicle lighter fuse. This should be 15amps minimum.

Compressor runs but does not inflate

- Check all connections are clean and secure.
- Check hose for damage or leaks.

Compressor runs slowly

- Overheated from excessive use – switch off and allow to cool.
- Power source too low.



IMPORTANT SAFETY INSTRUCTIONS

When using the Digital Automatic Air Compressor, basic precautions should always be followed, which include the following:

1. Read all the instructions and keep for reference.
2. Inspect before each use. Do not use if bent, broken, cables are showing heat damage, burnt or otherwise damaged components are seen.
3. Check the tyre pressure before inflating and never exceed rated pressure of the item being inflated. If rated pressure is exceeded, the item being inflated may over inflate and be damaged.
4. Do not bend the air hose while the device is working.
5. Never turn off the car engine when the device is working, otherwise the car battery may run down.
6. Do not use continuously for more than 10 minutes at a time. Turn off the unit when moving to a new tyre etc. This will ensure the unit does not overheat. When the unit has been operated for 30 minutes total time, turn off and cool for 30 minutes before using again.
7. If the device is making an abnormal sound or its temperature is too high, turn off the power at once and let it cool for at least 30 minutes before trying again. Improper use will result in damage to the device.
8. Do not leave device operating whilst unattended, and keep out of the reach of children.
9. Store the device in a dry place whilst not in use.
10. Do not use near to flammable liquid or gas/petrol vapour.
11. Never put the connector and adapters into mouth, ear or eyes, this is not a toy.
12. Only adaptors supplied by the manufacturer should be used with this device.
13. If a vehicle fuse is blown, only replace with a fuse of identical rating.



WARNING

The Digital Automatic Air Compressor operates on 12 Volt DC only. Do not attempt to operate the Digital Automatic Air Compressor with any other source or voltage. Do not rewire or reconfigure the Digital Automatic Air Compressor from it's original design or personal injury or bodily harm may occur.

DISPOSAL:

- Dispose of all packaging, paper, cartons and plastic, plastic bags in accordance with your local recycling regulations.
- At the end of the product's lifespan please dispose of it at an authorised household WEEE waste recycling centre.