

Halogen Carbon Fibre Heater 9839 Instructions

- A Main heater body
- B Heater controls
- C Heater grill
- D Base plate
- E 'Tip over' safety switch



RATING

- 220-240V~50/60Hz, 1200W
- Ensure that the voltage indicated on the identification plate corresponds with the mains voltage
- Net weight: 2.4kg
- This appliance must be earthed.

Please read these instructions fully before use.

ASSEMBLY

Assemble the body frame and the base plate together as the following sequences:

- Remove the mounting screw from the lower part of the body frame
- Insert the power cord through the hole placed in the middle part of the basement and then assemble the body frame to the base plate
- Secure the body frame to the base plate by means of the two mounting screws previously removed. Insert the power cord through the slot and push down into place.

Please read carefully before use and retain for future reference.

Coopers
OF STORTFORD

ELECTRICAL SAFETY

CAUTION

- Remove the packing and make sure that the appliance is intact. In case of doubt do not use the appliance and contact our after-sales service. Do not leave packaging materials such as plastic bags and staples within reach of children.
 - Before switching on the appliance check if the electrical voltage and frequency of the circuit correspond to those indicated on the appliance.
 - Use the appliance only for the mentioned purpose, namely as a heater for domestic use.
 - Do not use it for any other purpose as this could be dangerous.
 - The manufacturer is not responsible for any eventual damages caused by improper or faulty use.
 - The use of every electrical appliance calls for the awareness of some basic rules. Please note the following:
1. Never touch the appliance with wet or damp hands or feet.
 2. Never expose the appliance to atmospheric conditions such as rain, sun etc.
 3. The appliance must always be used on a flat, level and stable surface.
 4. Switch the appliance off and unplug it before cleaning.
 5. When the appliance is not in use, switch it off and unplug it.
 6. Do not use this heater in the immediate surroundings around wet areas such as swimming pools, baths or showers.
 7. Do not switch the heater on near pieces of furniture, curtains, and shelves etc.
 8. Keep combustible material such as furniture, cushions, bedding, paper, clothes, curtains etc... at least 1m away from the fan heater.
 9. Do not use the appliance near liquids or inflammable substances.
 10. In order to avoid overheating, do not cover the heater.
 11. If the power cord is damaged, the heater must not be used until it is replaced by the manufacturer, service agent or similarly qualified person.
 12. This appliance is not intended for use by persons (including children) with reduced physical, sensory or mental capabilities, or lack of experience and knowledge, unless they have been given supervision or instruction concerning use of the appliance by a person responsible for their safety.
 13. Children should be supervised to ensure that they do not play with the appliance.
 14. Children aged from 3 years and less than 8 years shall only switch on/off the appliance, provided that it has been placed or installed in its intended operating position and they have been given supervision or instruction concerning the use of the appliance in a safe way and understand the hazards involved. Children aged from 3 years and less than 8 years shall not plug in, regulate, clean or perform maintenance on the appliance.
 15. Do not let animals or children touch or play with the heater. The air outlet gets very hot during operation.
 16. Do not use this heater with a programmer or timer or any other device that switches the heater on automatically, since a fire risk exists if the heater is covered or positioned incorrectly.
 17. Do not connect the appliance to extension cords or multiple outlets.
 18. Do not damage and do not kink the power cord.
 19. If the cord of this appliance is damaged, discontinue use of this product and arrange replacement by the manufacturer.
 20. Before cleaning the appliance or carrying out any maintenance switch off at the power source.
 21. If the appliance faulty, switch it off without tampering with the product. If any repair is required please contact only the after-sales centres approved by the manufacturer and ask for original spare parts. Otherwise the safety of the appliance can be compromised.
 22. Only connect the heater to a single-phase socket with a main voltage as specified on the rating plate.
 23. Do not leave the appliance unattended while in use ensure that the switch is in OFF (o) position and always unplug the appliance when not in use.
 24. Do not use this heater in the rooms with explosive gas or while using flammable solvents, varnish or glue.
 25. Keep the heater clean. Do not allow any objects to enter into the heater as this may cause electric shock, or fire damage to the heater.
 26. Do not use this heater in small rooms when they are occupied by persons not capable of leaving the room on their own, unless constant supervision is provided.
 27. Always use the heater in an upright position.
 28. Do not use the heater to dry your laundry.
 29. The fireguard of this heater is intended to prevent direct access to heating elements and must be in place when the heater is in use.
 30. The fireguard does not give full protection for young children and for infirm persons.
 31. Never allow the cord to touch wet or hot surfaces, become twisted or be within reach of children when the appliance is in use.

WARNING

- This heater is not equipped with a device to control the room temperature. Do not use this heater in small rooms when they are occupied by persons not capable of leaving the room of their own, unless constant supervision is provided.
- The heater must not be used if the glass bulbs are damaged.
- Some parts of this product can become very hot and cause burns. Particular attention has to be given where children and vulnerable people are present.

CLEANING AND MAINTENANCE

- Before cleaning always remove the plug from the electrical socket.
- In order to avoid any hazard, only clean the appliance with a lightly dampened rag.
- After use (and before cleaning) always unplug the appliance and wait until the item is cool.
- The appliance needs only external regular cleaning.
- Never use abrasive powders or solvents. Only use a moistened cloth.
- **NEVER IMMERSE THE HEATER TO CLEAN IT**

OPERATION

Place the heater on a flat level surface. Please note: If the heater is used on a deep pile carpet the tip over switch may push through the carpet pile and prevent the heater from operating. If this is the case the heater may need to be placed on a harder surface.

Once the heater has been properly attached to the base plug and the heater in to a suitable power supply, switch on the first " POWER" switch. This will operate the first heat setting (400W) the second switch will operate the 800W setting bringing two of the carbon fibre elements on and the third will operate the final full power (1200W) setting.

The oscillation mode which rotates the heater through an angle of approximately 75 degrees. Pressing each switch again will switch each element off. The first power switch is the master control switch and needs to be on to control the other elements and oscillation.

SAFETY DEVICE

This appliance is provided with safety devices disconnects the appliance when the radiator is tilted or when is tipped by means of a switch situated in the lower part of the radiator.

REPLACEMENT BULBS

Replacement bulbs available from Coopers of Stortford.

Please ask for:

400W Halogen Carbon Fibre bulbs for use in 9839



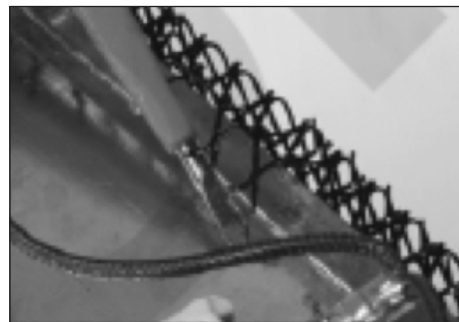
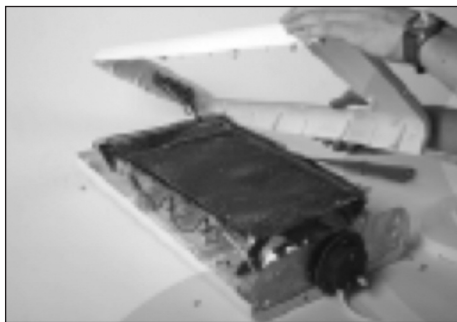
REPLACING THE BULBS

WARNING! Before you begin replacing the bulbs make sure the heater is unplugged from the mains socket and the unit (including the bulbs) has fully cooled.

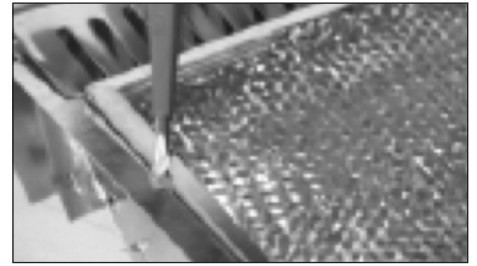
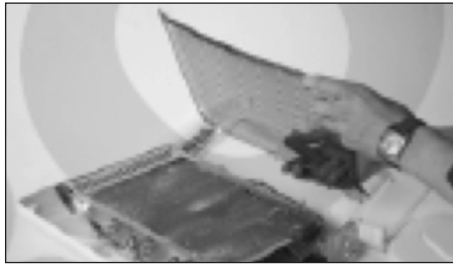
Please note that whilst the bulbs in this heater are replaceable we recommend that this is done by a professional electrician.



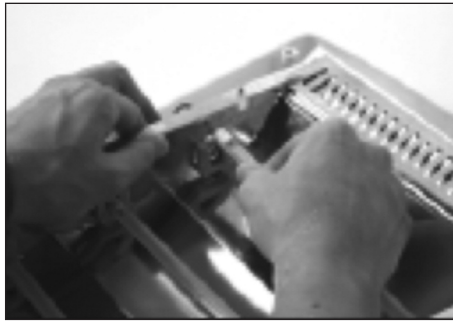
1. Unscrew the base to get access to the four screws at the bottom of the front panel and then unscrew them.



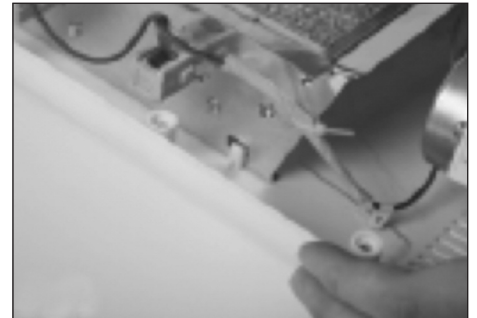
2. Unscrew the eight screws on the back panel and turn the heater over. Carefully lift off the front panel without disconnecting the wires at the top of the unit. Gently pry one side of the mesh from around the central unit.



3. Remove the mesh and pry open the tab that holds the grill in place, one from each corner as illustrated.



4. Pull away the grill revealing the bulbs, gently ease out the spent bulb.



5. Place the new bulb into position. Before reassembling the heater make sure the central unit is still held in the correct position by the clips, as seen in Fig 1. To reassemble the unit follow these steps in reverse.

EC DECLARATION OF CONFORMITY

We the Enterprise Department Ltd of 11 Bridge Street, Bishops Stortford, Hertfordshire, UK, CM23 2JU in accordance with the following Directives:

Electromagnetic Compatibility 2004/108EC
EN55014-1:2006+A1:2009
EN61000-3-3:2006+A2:2009
EN61000-3-3:2008
EN55014-2:1997+A2:2008

Low Voltage Directive 2006/95/EC
EN603345-1:2012
EN60335-2-30:2009+A11
EN62233:2008
ZEK 01.4-08/11.11

RoHS Directive 2002/95/EC

hereby declare that the equipment named above has been designed to comply with the relevant sections of the above referenced specifications. The unit complies with all applicable Essential Requirements of the Directives.

Mr. Stuart Fowler
Imports Director
June 2014

Packaging

- Dispose of packaging at your local recycling centre.
- Dispose of paper and carton separately from plastic bags at your local recycling centre.
- Dispose of item at the end of its lifespan at your local authorised household waste recycling centre.



Head Office, 11 Bridge Street,
Bishop's Stortford CM23 2JU
Tel: 0844 482 4400
Fax: 01279 756595
www.coopersofstortford.co.uk

Coopers
OF STORTFORD