

Green Bistro Set

Item No: J216

Instructions for Use

v003: 31 /01/24

Please read and retain these instructions for future reference

GAINSBOROUGH

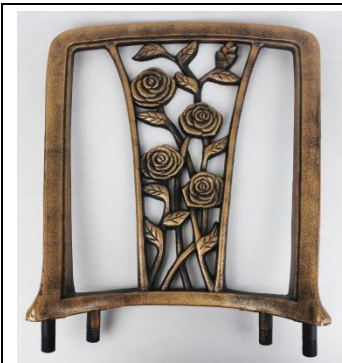
Garden & Wildlife

INSTRUCTIONS FOR USE:

Step by Step Instructions & Photos



PARTS LIST FOR CHAIRS:



Chair back x2



Seat x2



Leg x8



Arm rest x4



Chair centre brace x2

#### Parts for Chairs and Table:



**Plastic medium spanner x2**  
**Plastic Medium nuts x14**  
**Plastic Small nuts x19**  
**Metal nuts x12**  
**Metal Washers x12**  
**Open ended spanner x1**

#### PARTS LIST FOR THE TABLE:



**Table top x1**



**Table leg x3**



**Table centre brace x1**

#### NOTES TO CUSTOMERS:

- Please check that your parcel contains all the parts listed above.
- Please keep all the packaging for the product until you are satisfied with your purchase as we cannot accept any returned item not in the original packaging.
- For the protection of the furniture, we recommend that the product is placed on a protected surface during assembly to prevent any damage.
- Please ensure that you read the instructions before assembling the product.
- Please do not force or over tighten the nuts. If a nut becomes stuck, unscrew it and start again.
- Ensure you have plenty of space to assemble the item in, it is also recommended that you assemble the item close to where it will be kept.

## ASSEMBLING THE CHAIRS:

**IMPORTANT:** Do not force or over tighten the nuts. If a nut becomes stuck, unscrew it and start again.



1) Place chair upside down on a clean surface. Put the 2 front legs on the seat first using small plastic nuts, just hand tighten the plastic nuts.



2) Then get the centre brace and insert the thread through the hole of the front legs and using small plastic nut. Only hand tight at this stage.



3) Then get one of the back legs and insert the thread through the hole and using small plastic nut. Only hand tight at this stage.

Repeat the process with the other leg.



Then connect back legs to the seat using medium plastic nuts. Then go round and tighten all the nuts.





4) Turn over chair and attach arms with medium screw caps onto the threaded bolts.

**After Assembly, once you have tightened the nuts go round just double checking they are tight.**

**Before each use, regularly check the nuts, bolts and fixings are tight.**

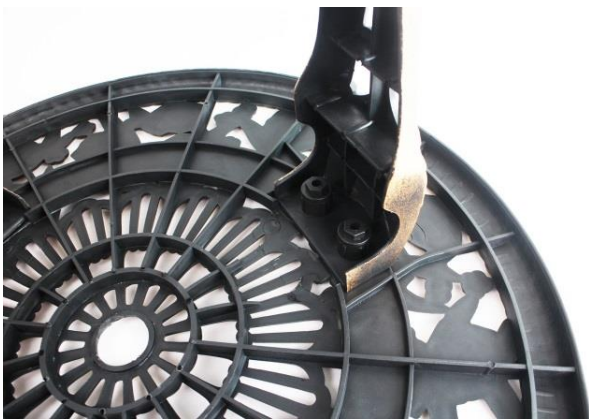
**The seat must be placed on an even surface.**

**Do not place the legs in between gaps in paving slabs or on pebbled or uneven surface.**

**Max load weight for chair is 95kg.**

#### **Assembling the table**

**IMPORTANT: Do not force or over tighten the nuts. If a nut becomes stuck, unscrew it and start again.**



1) Place table top face down on a clean surface. Fit the 3 legs with medium screw caps onto the threaded bolts.



2) Place centre brace among the three legs. Insert the threads through the tabs on each leg. Screw small nut onto each of the centre brace threads.



3) Turn table right side up.

**After Assembly, once you have tightened the nuts go round just double checking they are tight.**

**Before each use, regularly check the nuts, bolts and fixings are tight.**

**The seat must be placed on an even surface.**

**Do not place the legs in between gaps in paving slabs or on pebbled or uneven surface.**

**Max load weight for table is 75kg.**

#### **CARE AND MAINTAINENCE:**

- Max load weight for chair is 95kg.
- Max load weight for table is 75kg.
- Do not abruptly sit or jump on the chair. Do not stand on the chair.
- Do not stand or jump on the table.
- Please check all the assembly work before you sit on the chair. Make sure all the screws and bolts are tight and secure.
- Periodically check all fixings to ensure they remain secure.
- Prolonged exposure to the elements will inevitably lead to weathering – store away indoors throughout winter to preserve appearance.
- Do not leave the furniture out in excessively windy conditions as the furniture is light and may blow away.
- Clean using a mild detergent, do not use abrasive cleaners.
- When sitting in the chairs do not lean back and put excessive pressure on the back rest.

#### **DISPOSAL**

- Dispose of all packaging, paper, cartons, plastic and plastic bags in accordance with your local recycling regulations.
- At the end of the product's lifespan please dispose of it at an authorised household waste recycling centre.



#### **CUSTOMER SERVICES:**

Distributed by / Verteilt durch / Distribué par.

UK: The Enterprise Department Ltd.  
11 Bridge Street, Bishops Stortford, Herts, UK, CM23 2JU  
Tel: 0330 331 0300

NI/EU:  
D.S.B. LD, 160 Bd. de Fourmies, 59100 Roubaix, France  
Tel: (+44) 1279 701269