



Height: 26cm

Width: 14cm

Depth: 17.5cm

Weight: 1.34kg

BEFORE FIRST USE: Remove the protective film from the solar panel.

CHARGING AND OPERATION:

There is an "on/off" switch at the bottom of the item, Press the switch down to the "on" position. Then replace the cover and position the light in a sunny location. Charge the solar product by placing it under direct sunlight for at least 8 hours.

The light will work automatically. It will charge under direct sunlight during the day time and illuminate at night.

NOTE: In order to test the lights, simply cover the solar panel with your hand and the light should turn on automatically.

IMPORTANT:

Install the solar product in an area where it can get direct sunlight.

Leave the switch in the "ON" position.

Select an outdoor location away from other light sources at night, such as street lights. It may cause the product not to turn on automatically at night.

Duration of light depends on the solar product's level of sunlight exposure, geographical locations, weather conditions and the hours of daylight.

MAINTENANCE AND TROUBLESHOOTING:

Make sure the switch is set to the "ON" position.

Keep the solar panel clean.

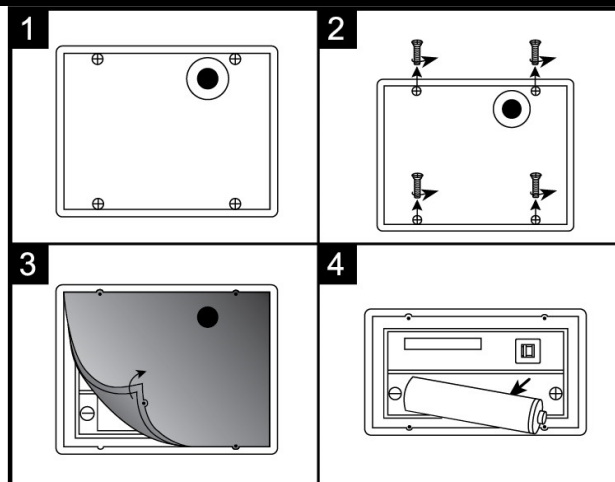
If the solar product does not light up after it has been used for around 8 – 12 months, replace the rechargeable battery as it may be weak or worn out. (Battery 1 pc "AA" 1.2v 400Mah, Ni-MH, Rechargeable— Same equivalent type as recommended must be used).

Battery replacement:

Step1: Unscrew the battery compartment cover by using a Phillips head screwdriver (not included) .

Step2: Remove the exhausted battery and install 1 pc new AA rechargeable battery according to the +/- polarity as shown in image. Open the compartment carefully and ensure that the wire inside the battery terminals is not damaged.

Step3: Replace battery compartment cover, screw it back into position and make sure it is properly sealed.

**CARE AND CLEANING INSTRUCTIONS:**

- Always switch off and remove batteries when not in use.
- Do NOT immerse in water.
- Do NOT use abrasive cleaners or sharp utensils to clean this product.
- Wipe with a clean dry cloth.

BATTERIES

- Keep batteries away from children and pets.
- Never dispose of batteries in a fire.
- Keep batteries away from children and pets.
- Battery disposal, spent or expired batteries must be properly disposed of and recycled in compliance with local regulations. For detailed information, contact your local authority.
- Follow the battery manufacturer's safety, usage, and disposal instructions.

DISPOSAL

- Dispose of all packaging, paper, cartons, plastic and plastic bags in accordance with your local recycling regulations.
- At the end of the product's lifespan please dispose of it at an authorised household WEEE waste recycling centre.

