

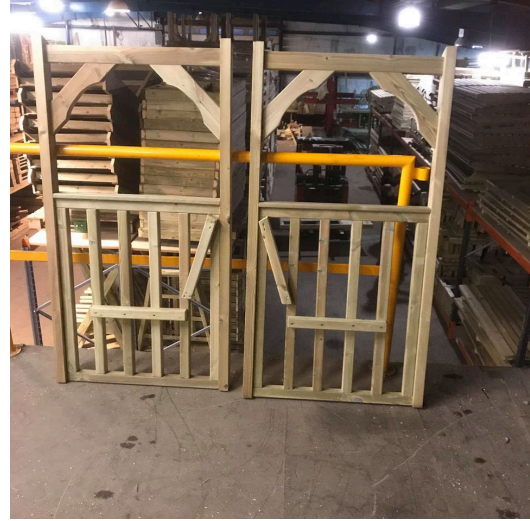
## Anastasia Assembly Instructions AA101/ AA102

For the Anastasia arbour there will be 7 different parts they are as follows:

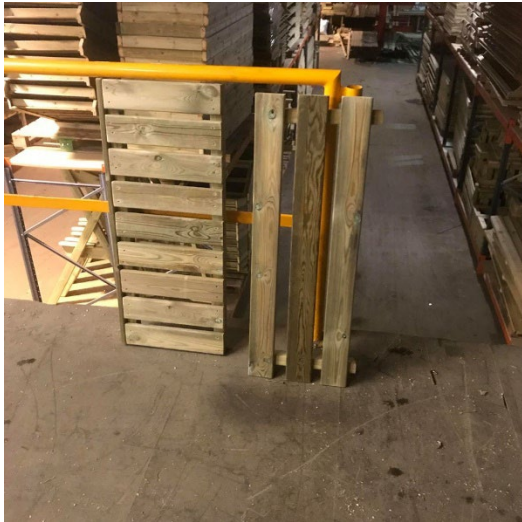
Part 1 Back Panel



Part 2 & 3: Left & Right hand side panel



Part 4 & 5 : Bottom seat panel & back seat panel



Part 6 : Rear support bar



Part 7: Roof Panel



- 1) Take parts 1, 2 & 3 and lie them down on a flat surface like in the picture, ensuring that the 2x2 timber on the side panels is on the inside of the assembly. The back panel (part 1) will sit in between the 2 side panels. Use 4 of the screws to screw the back panel into the side panels, as indicated by the arrows, using 2 screws each side.



- 2) Next fit the rear support bar (Part 6). Place this in between the two side panels so that it runs in line with the bars already fitted inside the side panels. Once in place insert the screws as indicated by the arrows on the picture, 2 on each side. The screws should be at an angle similar to the arrows.



- 3) Now stand the arbour up.

Take the bottom seat panel and sit this in between the side panels so that it rests on top of the 2x2 ledge on each side panel. Then insert 4 screws, 2 each side as indicated on the photo, through the side panel into the bottom seat panel. Once the bottom seat panel is secured insert the back seat panel, place this in between the 2 side panels and screw in place as the arrows indicate. 2 screws each side.





- 4) The final stage is to place the roof on top of the arbour. You may have to wiggle it on slightly and adjust to ensure it is in alignment. Once in position screw into place, screwing through the side of the roof into the uprights of the side panels, using 2 screws each side of the roof as indicated on the picture.



**Your arbour should now be complete and ready for use. Here is a photo to show you the finished product.**

