

Picnic Table Assembly

Tools required for assembly (not supplied):

Power screwdriver with a PZ2 bit, (spanner, hammer if bolted)

3.5mm pilot drill bit

You can, however, skip using the pilot drill bit since our screws come with a self-cutting tip for easy insertion, which also prevents splitting. When screwing, just be cautious not to get too close to the wood edges or where other parts might interfere with your power screwdriver's access.

You should have 7 components:

Part 1: Table Top



Part 2 & 3: 2 x Identical Seat Panel



Part 4 & 5: 2 x identical leg frames



Part 6 & 7: 2 x Identical Support Brackets



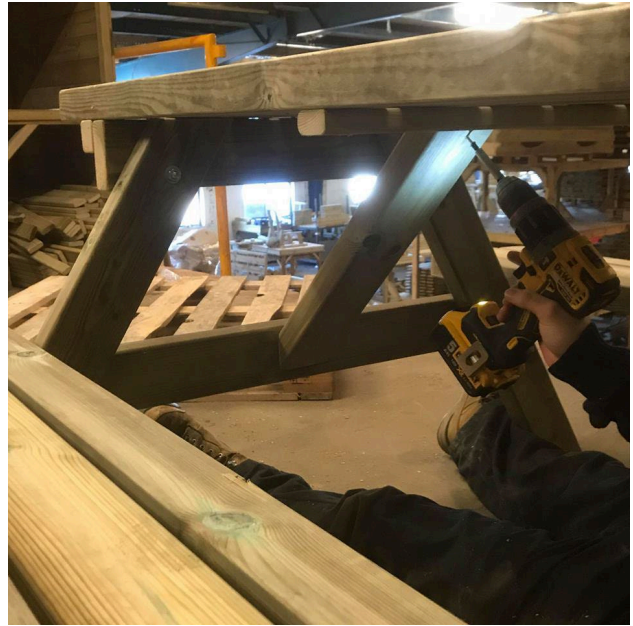
Lie the table top upside down on the floor, place the legs in position as show on the picture and insert screws through the cross brace underneath the table top, into the legs, using 3 screws each side.



Turn the table over now so that it's standing the correct way up. Place the seats over the leg frames on both sides of the table and screw in to place by screwing through the brace underneath the seat into the leg frame. Using 2 screws on each end section, you will use 8 in total.



Screw in the support brackets. They should be screwed up through the top of the support bracket into the table, and through the bottom of the support bracket into the leg frame, using 2 screws at the top and the bottom of each bracket, as the photo indicates.



You are now set to use your picnic table here is how it should look.



PRODUCT INFORMATION– PLEASE READ

Thank you for making the decision to purchase our eco-friendly garden products.

When first delivered your item may appear to look slightly green in colour. This is due to the Tanalith-E treatment which the wood has been pressure treated with and is evidence of thorough treatment. The green tint will fade as the treatment fully settles and the furniture is exposed to the elements. There may be residue of the treatment in a dry form around the knots which can be easily wiped off with a cloth or stiff brush. This will not affect the efficiency of the treatment.

We made the decision to have our furniture pressure treated as it is the best possible way to ensure that you will get maximum life out of your garden furniture. The pressure treatment process can protect the timber against rot for as long as 15 years which means that we are manufacturing responsibly and showing care for the environment. However, during the pressure treatment process some of the natural oils and resins are removed from the timber during the vacuum and pressure treating stages, and replaced with the Tanalith-E treatment. This means that the timber can be more prone to splits and cracks than non-treated timber. During hot or dry spells, the grain can open and splits or cracks may appear along the grain lines, this is of no detriment whatsoever to the longevity of the product and is a completely natural characteristic due to wood being a natural product.

When the weather is damp or humid then the timber will absorb moisture from the air, the grain will swell, and the splits or cracks will lessen or disappear. Your timber product does not need further preservative treatment to stop it from deteriorating, however, we do advise that it is coated on all surface areas with a garden furniture oil or wood protective treatment soon after delivery, and then annually to moisturise and weather proof the timber and help to protect against UV damage.