

Garden Swing Assembly Instructions - SW101/2 SW103/4 SW105

There are 6 components for this assembly they are as follows:

Part 1 & 2: Left side panel / Right side panel



Part 5 : Swing Roof (*style of roof dependent on the model)



Part 3 & 4: Swing hook bar / Rear support



Part 6 : Swing Seat with chains



Recommended tools:

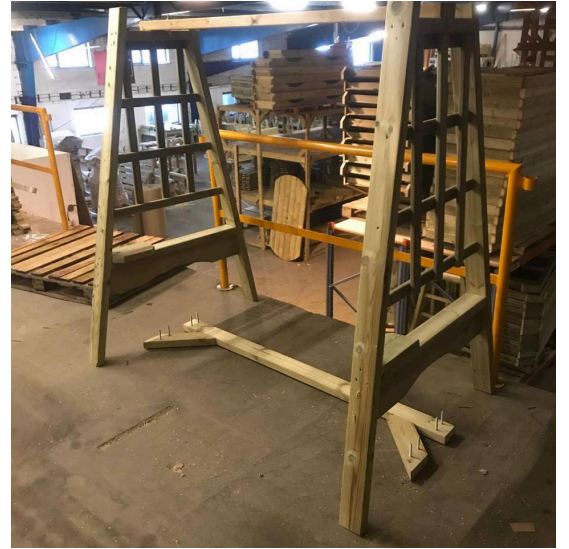
Battery screwdriver fitted with pz2 bit, Hammer, 13mm spanner, 9mm wood drill bit

Fixings: 12 x M8 x 110 bolts, 12 x M8 Nuts, 12 x M8 washers, 4 x 5mm x 100mm Screws.

- 1) Take the swing hook bar (Part 3) and the rear support bar (part 4) and knock bolts through the holes, 12 holes in total. Ensuring when you knock the bolts through the hook bar that the hook is hanging down, as shown in the picture.



- 2) Take the swing sides (parts 1 & 2) and place the swing hook bar (part 3) on top of them, knocking the bolts through down into the swing sides. Please ensure at this stage that the cup holders on the swing sides are facing inwards. Do not tighten up the nuts yet. When knocking the bolts through if the fit is overly tight, we advise just running a 9mm drill bit through the holes again, as the wood can swell and expand with differing humidity and weather conditions during storage and transit.



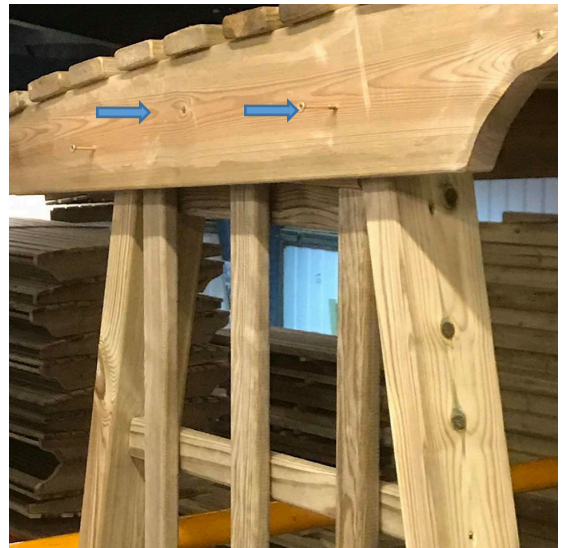
- 3) Next attach the rear support bar as shown in the picture, you should knock the bolts all the way through the swing sides. Try to get all the bolts lined up first rather than knocking one end fully in first, as this makes it difficult to then get the other end in.



-
-
-
- 4) Next hang the seat, you should hang the chains of the seat from the hooks on the hook bar. Make sure when hanging the seat, you do it with an equal amount of links either side of the hook, so that the seat sits level. You can alter the amount of chain links either side of the hook, and this will alter the upright angle of the seat, so there are no rules or exact amount of links that you need to adhere to, please hang it to suit your own preferred requirements. When the seat is in the correct position for you tighten up the hooks on the hook bar



-
-
-
-
- 5) Now sit the roof on top of the swing. You can move the roof forward or back depending on what kind of cover you would like. When in the desired position screw 2 screws either side of the roof section into the upright of the swing side.



-
-
-
-
-
- 6) Next, place washers and nuts on all the bolts that you have inserted, and fully tighten, so that the swing is secure.

Your product is now ready to use, here is how it should look:

(*dependent on model)



Link to Assembly Video:

<https://youtu.be/TRXVt57gH4Q>