



SAFETY WARNINGS:

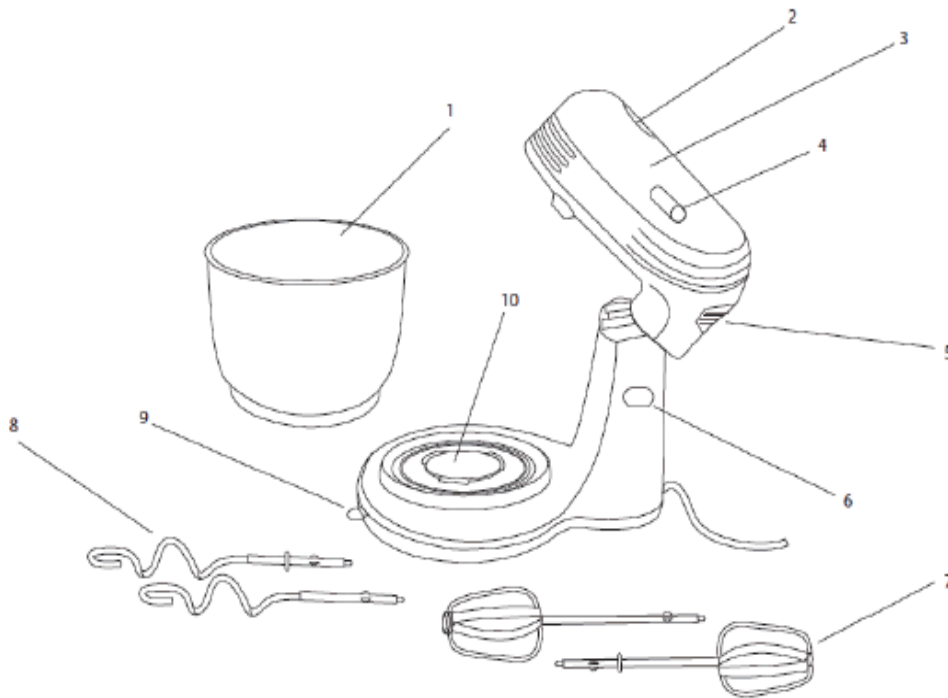
- Please read the instructions and warnings before using the food mixer for the first time.
- Always check for damage prior to using the food mixer. Any damage should be repaired properly by a qualified service engineer. If experiencing any difficulty consult your local dealer.
- Never carry out modifications to this product.
- This appliance is not intended for use by persons (including children) with reduced physical, sensory or mental capabilities, or lack of experience or knowledge, unless they have been given supervision or instruction concerning use of the appliance by a person responsible for their safety.
- This unit is for domestic use only.
- To protect against electric shock, do not immerse cord, plug or appliance in water or any other liquid.
- Unplug from outlet when not in use and allow the item to cool thoroughly before cleaning.
- Do not operate appliance with a damaged cord or plug or after the appliance malfunctions in any manner. We recommend that the power cord is not stored kinked or twisted, and that you regularly check its condition.
- Do not use this appliance for any other use than the intended use it is designed for.
- Take care not to drop the appliance as heavy impacts may cause internal damage.
- Before switching the product on, make sure that the voltage of your electricity supply corresponds with what is indicated on the rating label.
- Connecting the appliance to any other source may cause damage or risk of electrical hazard.
- Children should be supervised to ensure that they do not play with the unit.
- The unit is not intended to be operated by means of an external timer or separate remote-control system.
- Given the diverse standards in effect, if the appliance is used in a country other than that in which it is purchased, have it checked by an approved service centre.
- Keep the appliance and the power cable out of the reach of children when the unit is plugged in or cooling down.
- Use the mixer on a flat, dry surface.
- Do not use outdoors.
- Do not pull on the cord to unplug the device. In order to unplug the appliance, grasp the device by the plug housing.
- If the supply cord is damaged, it must be replaced by the manufacturer or its service agent or a similarly qualified person in order to avoid a hazard.

- In order to prevent the device from overheating, do not place it in a corner, against a wall, or on a fragile surface, such as a glass table, tablecloth or varnished furniture.
- Do not use appliance for other than its intended use.
- Do not place on or near a hot gas or electric burner, or in a heated oven.
- Unplug the unit when it is not in use and before you clean it. Turn it off before unplugging it.
- Do not plug in or unplug the unit with wet hands.
- This appliance may be fitted with a non-rewireable plug. If you need to change the fuse in a non-rewireable plug, the fuse cover must be refitted. If this becomes lost or damaged, the plug must not be used until a replacement is obtained.
- If the plug has to be changed, it should be cut off and an appropriate plug fitted following the wiring instructions. If in doubt, consult an electrical service engineer.

BEFORE FIRST USE:

- Wash the bowl and utensils in hot soapy water and dry thoroughly before first use.
- Do not fill the bowl to more than 2/3 of its capacity.
- Switch off and unplug the device from the power supply before assembly or changing any accessories, or any moveable parts.
- Do not mix hot liquid in the food mixer. Allow to cool before mixing.
- Check that the voltage of the appliance corresponds with your house electricity supply which must be AC. For correct voltage see the rating label on the bottom of the food mixer.
- It is recommended to start mixing at the lowest speed and gradually increase the speed.
- Do not over mix beyond the recommended times in your recipe and never exceed 5 minutes continuous mixing.
- Do not exceed 0.75 kgs of ingredients in the mixer at any given time.
- Do not use the device for more than 15 minutes continuously.
- Leave the appliance for 30 minutes before switching it on again. Over-use could lead to the appliance overheating and malfunctioning.

PARTS:



1 Stainless steel bowl

2 Utensil eject button

3 Motor unit

4 Speed regulator

5 Motor air vent

6 Motor unit release button

7 Whisks

8 Dough hooks

9 Bowl adjustment lever

10 Bowl mounting base

USE:

- Place the appliance on a flat surface.
- Press the motor unit release button and tilt the motor head over the mounting base.
- Set the bowl on its base and tighten by turning the bowl clockwise.
- Insert the dough hooks / whisk head into the motor unit head.
- Both utensils have L and R printed on them. Insert the corresponding head into the Left or Right rests in the motor unit head.
- You will hear a click when the utensils are set correctly in place.
- Plug the device into the mains, ensuring that the required speed setting is selected.
- Add the required ingredients to the mixing bowl and press the tilt release button to set the utensils into the bowl and select a speed from 0 to 6.
- (0 indicates that the product is off, whilst 6 indicates that the product is at maximum speed).
- To add ingredients whilst the food processor is on, reduce the speed to 1 or 0 and push the adjustment lever down and then right (or left, depending on the starting position of the adjustment lever).
- If necessary, turn off the device and use a spatula to move the ingredients back into the centre of the bowl.
- Once you have finished mixing, move the speed to 0 and unplug your device.
- Press the tilt release button to lift the head of the mixer and remove your mixing bowl.
- Press the Eject button to remove the whisk/dough hooks.
- Never press the Eject button whilst the appliance is in operation.
- Only use the dough hooks when making bread or pizza dough, or working with any other thick paste.
- Use the whisk utensils for more liquid preparations such as egg whites, sauces such as mayonnaise or pancake batter.

MAINTENANCE:

- Always unplug the appliance before cleaning and ensure to remove all accessories.
- Do not immerse the body of the unit in water, nor allow water to get through the motor air vent.
- Wipe the body and motor unit with a clean, damp cloth. Ensure to dry thoroughly before use.
- The utensils and mixing bowl can be washed in warm soapy water, dry thoroughly to prevent these parts rusting.
- Do not clean with abrasive detergents as this may cause damage to the surface of your device.
- Never immerse the base of the processor in water, this may cause damage to the motor and could cause electrocution.

Technical Specification:

3L Food Mixer Cream

Item 10259

Voltage 230V ~ 50/60 Hz

Wattage 150W

Class II appliance

Disposal:

- Dispose of the packaging at your local recycling centre.
- Dispose of the paper and carton separately from plastic bags at your local recycling centre.
- Dispose of the unit at the end of its lifespan at your local authorised household waste recycling centre.

