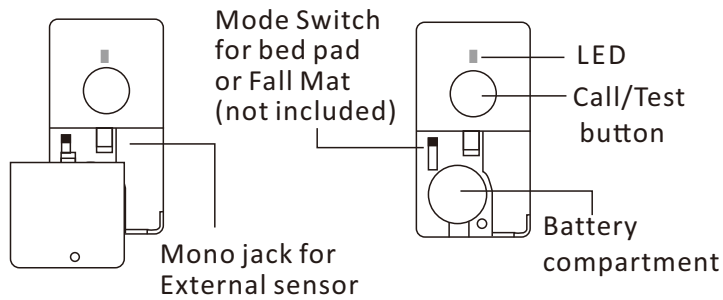
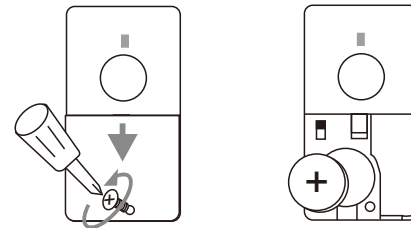


The Wireless Call Button is to be used in conjunction with Wireless Receiver with Doorbell -Item code no. 10708

Part & Function



Battery installation



- * Unlock the screw
 - * Slide to open the cover
- Insert a CR2032 (included) Battery "+" face up

CODE PAIRING & MELODY SELECTION

The wireless call button works with the receiver (chime unit) and must be paired prior to use.

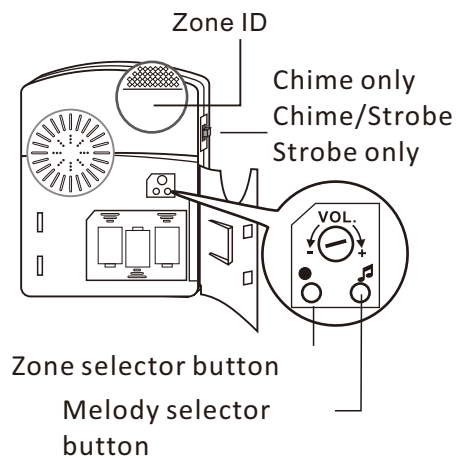
Step 1: Insert the battery into the call button.

Step 2: Insert the batteries into the receiver (chime unit).

Step 3: Enter pairing mode for receiver (chime unit). Press and hold the ● zone selector button for 3 seconds. The LED #1 will flash.

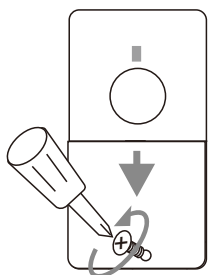
Step 4: Press the ● zone selector button again to move to the zone you wish to pair with. Press 🎵 button to scroll through the melodies. Once you hear a melody you prefer, do not press any button as the melody is set for that zone.

Step 5: Once the zone and melody are selected, press the call button once. If successful, the receiver will generate a short tone. Press the ● zone selector button to exit pairing mode. The system is ready to use.

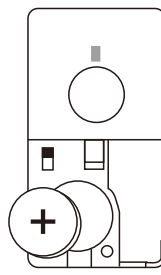


Code Conflict

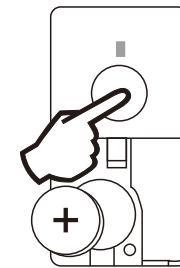
If the call button coding is the same as another transmitter you must change the code. When you have changed the code re-pair the call button.



Open the cover



Remove the CR2032 battery

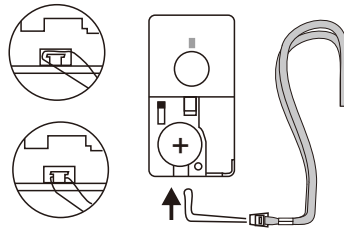


Press and hold the test button, insert the battery whilst holding the button for 5 seconds. The LED will flash 5 times when a new code is generated

OPERATION

Install the lanyard

1. Open the battery cover
2. Push the lanyard into the gap
3. Pull the lanyard to hold on the column
4. Close the battery cover



When the person needs help press the call button once.

Temporarily cancel the CALL function

Press and hold the Call/Test button for 6 seconds, the LED will blink 4 times to indicate the call function is cancelled. To recall the call function press and hold Call/Test button 6 seconds again, the LED will blink twice to indicate the call function is recalled. Replacing the batteries will recall the test function.

WARNINGS / CAUTIONS

- For best results, use good quality alkaline batteries.
- Always replace old or weak batteries.
- Keep call button dry. If wet, dry immediately.
- Do not use cleaning solvents on electronic products.
- Solvents contain chemicals that can damage circuitry. Use damp towel or cloth to clean. Dry immediately.
- Do not expose the bell unit to rain or immerse in water. It is not water resistant.

BATTERIES

- Keep batteries away from children and pets.
- Do not mix used and new batteries.
- Remove the batteries if left for long periods.
- Never dispose of batteries in a fire.
- Battery disposal, spent or expired batteries must be properly disposed of and recycled in compliance with local regulations. For detailed information, contact your local authority.
- Follow the battery manufacturer's safety, usage, and disposal instructions.

DISPOSAL

- Dispose of all packaging, paper, cartons and plastic, plastic bags in accordance with your local recycling regulations.
- At the end of the product's lifespan please dispose of it at an authorised household WEEE waste recycling centre.

