

Tablet Stand 10781

Instructions for Use

Please read and retain these instructions for future reference

v001: 21/02/17





INSTALLATION GUIDE:

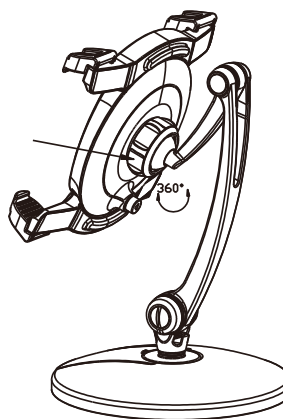
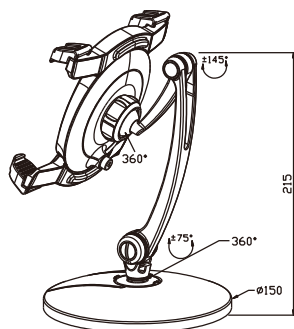
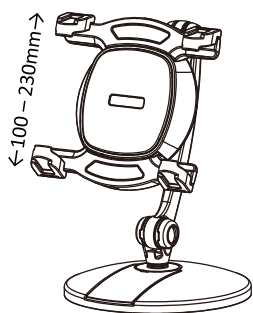
Product Size: 300mm x 215mm

Weight: 1.17kg

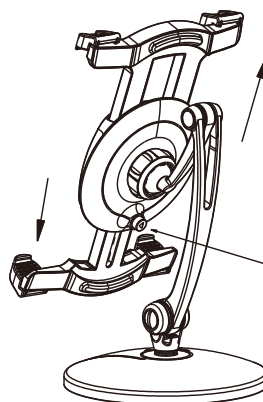
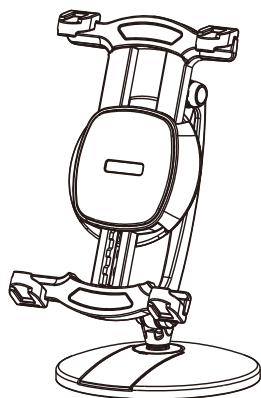
- Suitable for all 7in – 12in tablets. Can be used on wall, table top or on a cabinet.
- 360° rotating head. Rotate for Portrait or Landscape use.
- Quick release design, easy for installation and disassembly.

Parts

	1 Tablet stand	2 Wall plate	3 Screw	4 Wall anchor
Display				
Quantity	1	1	3	3

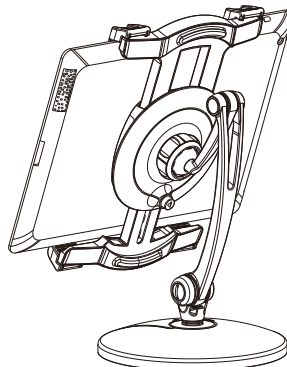
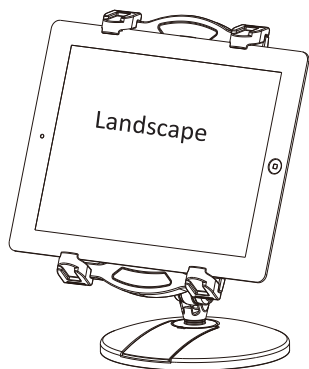


1. Rotate where the arrow points to the right to increase the torsion of the main body

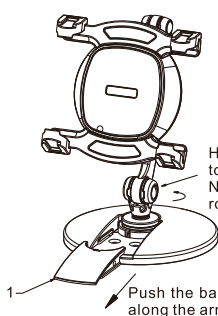


Pull along the arrow direction to adjust the appropriate distance

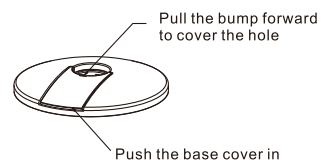
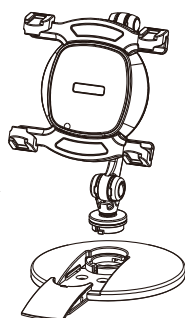
Push the button to adjust downward the appropriate distance



Quick release arm



Hold where the arrow points, rotate to the left and take the upper half out. Note: you will not take it out if it's not rotated to the right spot.



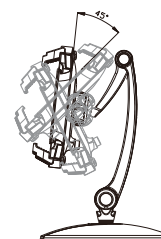
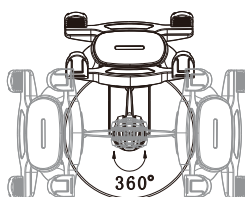
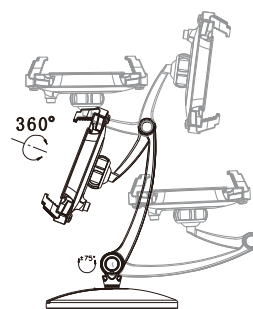
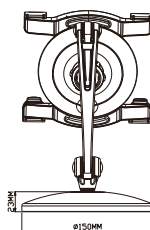
1. Push the base cover out along the arrow direction. Hold where the arrow points, rotate to the left and take the upper half out. Note: you will not take it out if it's not rotated to the right spot.

2. After taken out (as pictured)

3. Push the base cover in, pull the bump which the arrow marks forward, cover the hole.

Use specification –

Wall mounted tablet holder only



Tablet Stand 10781

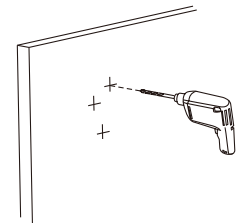
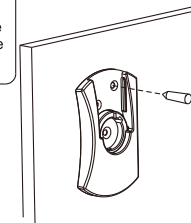
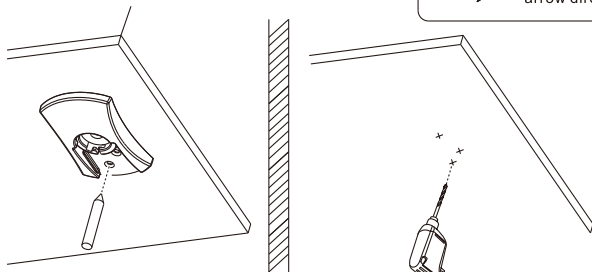
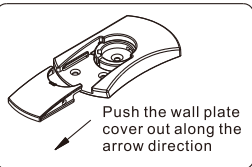
Instructions for Use

Please read and retain these instructions for future reference

v001: 21/02/17

Install the screen –

Wall mounting

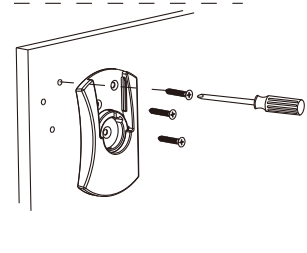
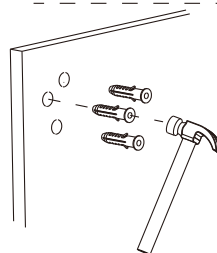
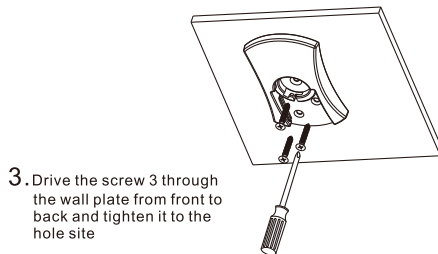


1. Make marks according to the hole site of the wall plate. (opening forward)

2. Use 2.5MM drill to punch holes.

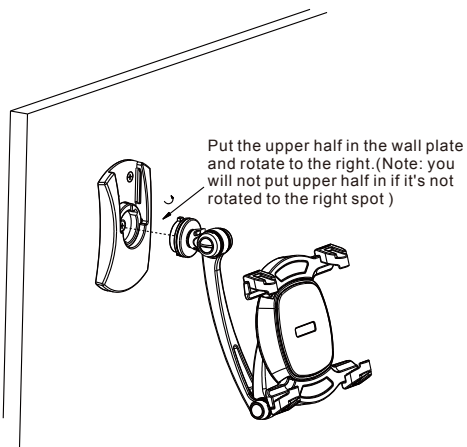
1. Make marks according to the hole site of the wall plate. (opening upward)

2. Use 8MM drill to punch holes.

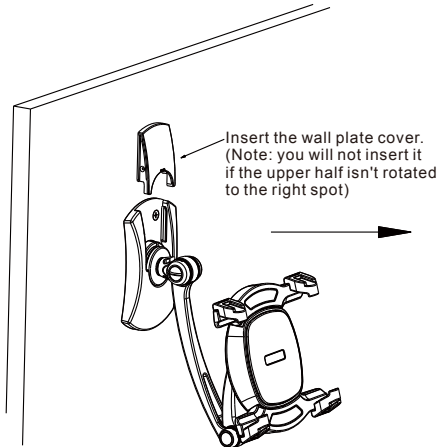


3. Carefully drive the wall anchor 4 into the wall with a hammer

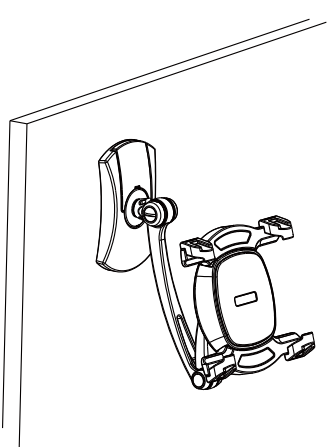
4. Drive the screw 3 through the wall plate from front to back and tighten it to the wall anchor.



1. Put the upper half which is separated in step 4 in the wall plate and rotate to the right. (Note: you will not put upper half in if it's not rotated to the right spot)

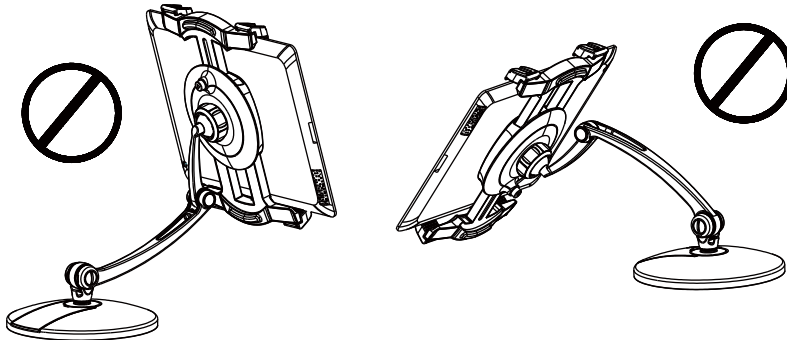


2. Insert the wall plate cover which is separated in step 3. (note: you will not insert it if the upper half isn't rotated to the right spot)



3. After assembled as pictured

WARNINGS / CAUTIONS:



When using it as a tabletop stand, please adjust the extension of the arm appropriately and pay attention to the balance of the fulcrum, avoid the damage cause by the falling over of the tablet.

DISPOSAL:

- Dispose of all packaging, paper, cartons and plastic, plastic bags in accordance with your local recycling regulations.
- At the end of the product's lifespan please dispose of it at an authorised household waste recycling centre.