



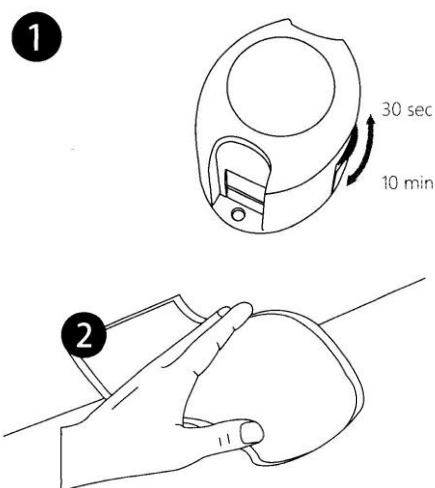
FOR INDOOR DOMESTIC USE ONLY

TECHNICAL DETAILS:

Package contains 2x1.5m LED light strip, 2x sensors, 1x mains power adapter (12V dc)
LED consumes up to 7.5W to produce the same light as up to 25W incandescent bulb.

When stepping out of bed at night a light will turn on to guide you safely across the room. The soft illumination will then automatically turn off when no motion is detected.

Installation Instructions



Timing adjustment

The factory set sensor timing time is 30 seconds which can be easily adjusted to any other time between 30 seconds and 10 minutes. Adjust the side of the sensor's button to 10 minutes.

See Figure 1

Clean surface

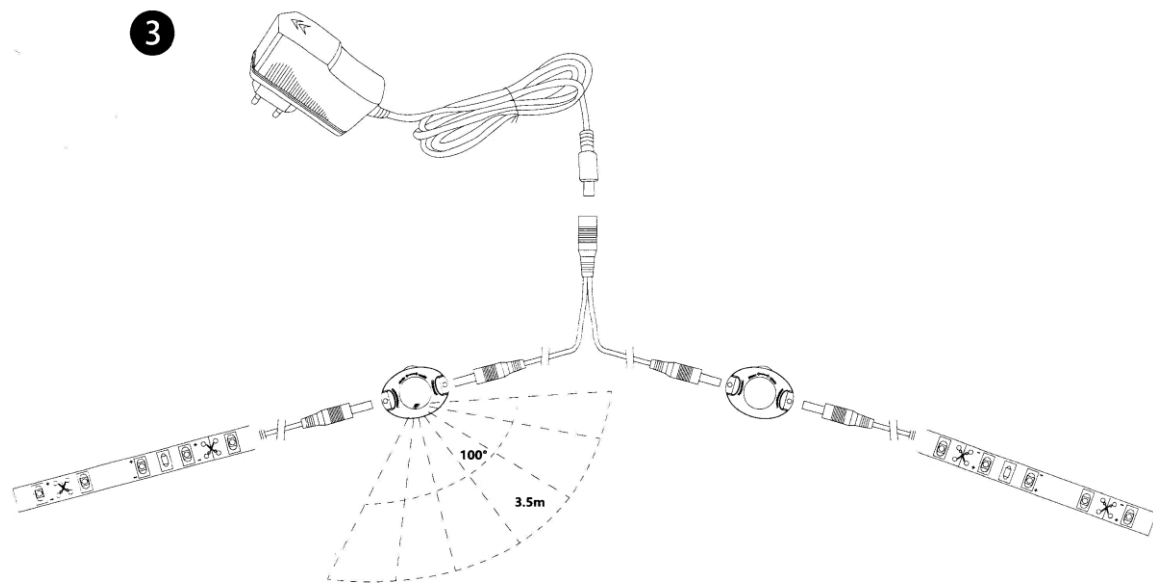
Before installation, please completely clean and wipe the surface with a dry cloth.

See Figure 2



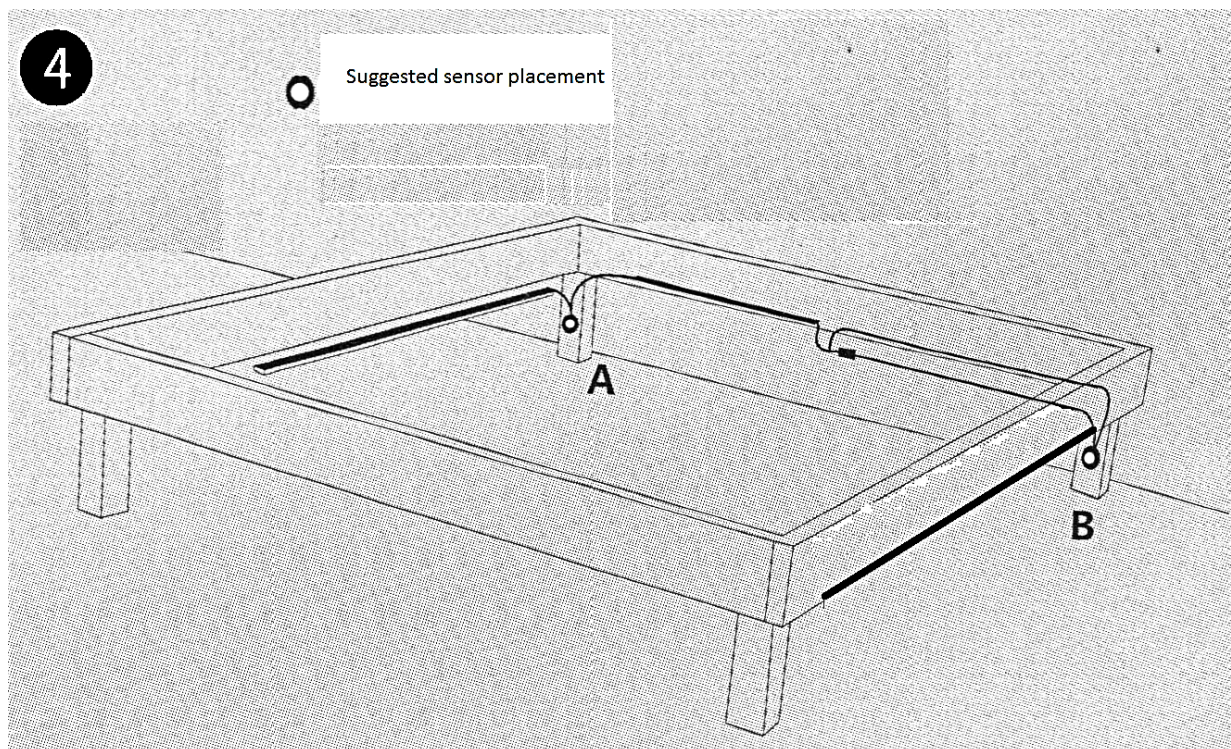
Option

LED Strip can be cut with scissors at the indicated symbol according to the length required.



Connect components

Uncoil the LED strip and connect one end to the sensor and one end to the adapter.
See Figure 3



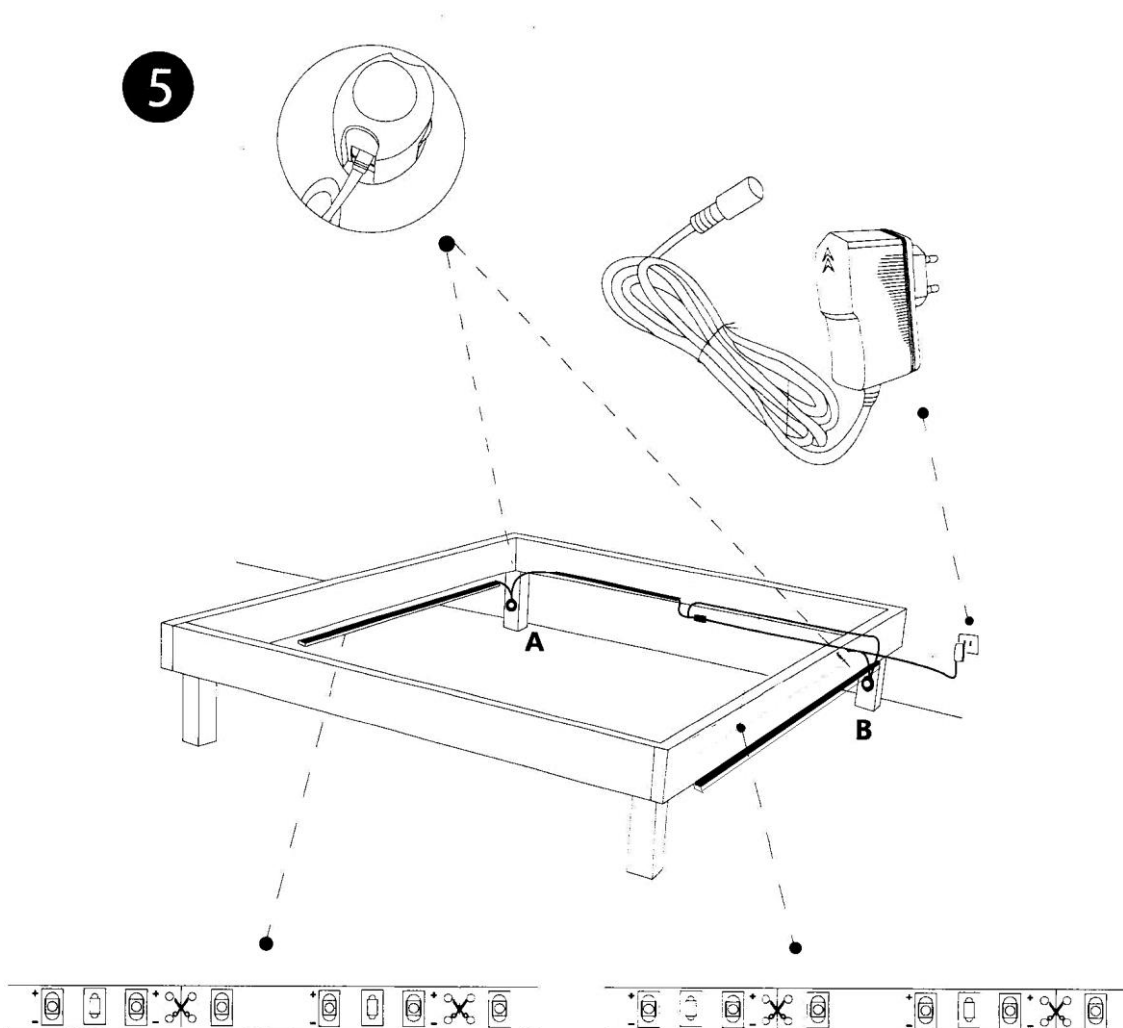
Choose the Sensor installation position

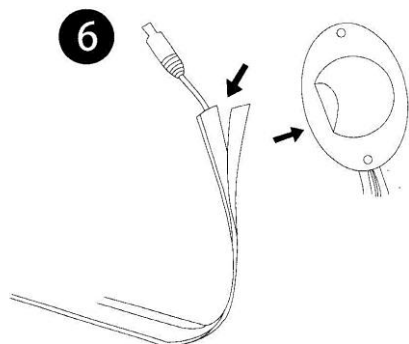
Choose the best position for the sensor to be installed where body motion movement or ambient light can be detected, see figure 4. To install sensors remove 3M tape adhesive backing layer and fit in position.

The sensor light will only come on when it is dark.

Power supply

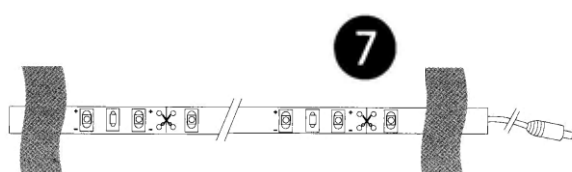
Plug the adaptor into the socket, see figure 5 and the sensor will be automatically start timing about 30 seconds after power is turned on.





Installation under the bed

Place the connected components under the bed. Plug the adapter into a power socket or extension block. Before installing the sensor and strips, please remove 3M tape adhesive backing layer. See Figure 6.



Fixed strips

See Figure 7, used for fixing both ends of the strips, to prevent the strip from falling down.

WARNINGS AND SAFETY INSTRUCTIONS:

WHEN USING ELECTRICAL APPLIANCES, BASIC SAFETY PRECAUTIONS SHOULD ALWAYS BE FOLLOWED:

- READ ALL INSTRUCTIONS BEFORE USE.
- FOR DOMESTIC INDOOR USE ONLY. DO NOT USE OUTDOORS OR FOR COMMERCIAL USE.
- DO NOT USE ANY OTHER ADAPTOR THAN THE 12V DC MAINS ADAPTOR PROVIDED.
- BEFORE USE, CHECK THOROUGHLY FOR ANY DEFECTS AND DO NOT USE IF DEFECTS ARE FOUND. TAKE CARE NOT TO DROP THE APPLIANCE AS HEAVY IMPACTS MAY CAUSE INTERNAL DAMAGE.
- BEFORE CONNECTING THE APPLIANCE, CHECK IF THE VOLTAGE INDICATED ON THE BOTTOM OF THE APPLIANCE IS IN ACCORDANCE WITH THE MAINS VOLTAGE IN YOUR HOME.
- CHECK THE APPLIANCE AND POWER CABLE CAREFULLY FOR DAMAGE BEFORE EACH USE.
- KEEP AWAY FROM CHILDREN.
- THE USE OF ANY ACCESSORY OR ATTACHMENTS NOT RECOMMENDED BY COOPERS OF STORTFORD MAY CAUSE INJURIES AND INVALIDATE ANY WARRANTY YOU MAY HAVE.
- DO NOT COVER THE ITEM IN ANY WAY WHEN IN USE AS THIS MAY CAUSE OVERHEATING.
- DO NOT USE THIS APPLIANCE FOR ANY OTHER USE THAN THE INTENDED USE IT IS DESIGNED FOR.
- DO NOT USE IF THE ADAPTOR OR SENSOR LIGHTS ARE FAULTY.
- ANY REPAIRS MUST BE CONDUCTED BY A QUALIFIED ELECTRICIAN OR ELECTRICAL SERVICE AGENT.

DISPOSAL:

- Dispose of all packaging, paper, cartons and plastic, plastic bags in accordance with your local recycling regulations.
- At the end of the product's lifespan please dispose of it at an authorised household WEEE waste recycling centre.

