

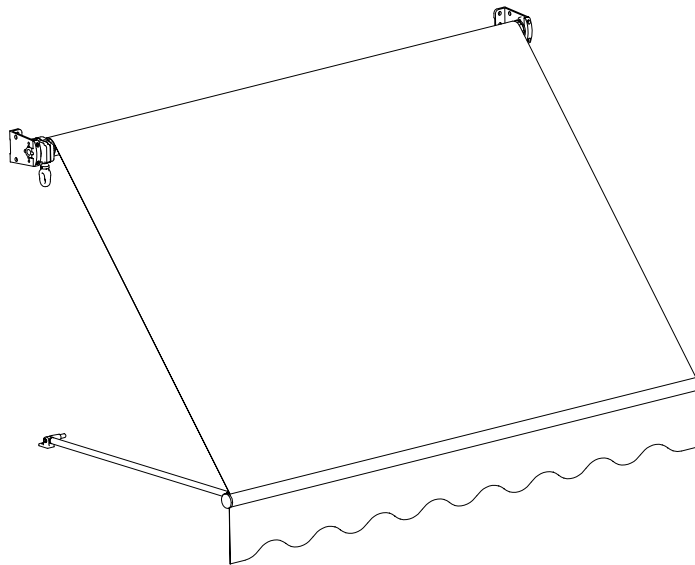
1.5m Window Awning Shaftesbury 11006

Instructions for Use

2m Window Awning Shaftesbury 11007

Please read and retain these instructions for future reference

v001: 23/10/17



Specifications:

Expansion bolts supplied are for fixing to concrete and masonry walls only.

When fitting the awning to the brackets check carefully that you have allowed for enough clearance between the extending arms and any opening door or windows so they do not snag or catch the aperture.

It is recommended the height of the awning above the aperture should be greater than 5cm.

Safety advice:

- Do not install in high windy places.
- Do not use in rainy or windy conditions.
- Use for a sun awning only.
- Be careful where you place fingers during the installation of this product.
- Please ensure all fixing are tightened at each step of the awning installation.
- Two people are required for the installation of the product.
- Do not place awning in areas of high temperature such as on furnace walls.
- Do not place heavy items on the frame of the awning.
- We do not recommend installing this product on prefabricated structures such as caravans, static homes and wooden buildings.

*Calls cost 7 pence per minute plus your telephone company's network access charge

Head Office, 11 Bridge Street,
Bishop's Stortford CM23 2JU
Tel: 0844 482 4400*
Fax: 01279 756 595
www.coopersofstortford.co.uk

Coopers
OF STORTFORD

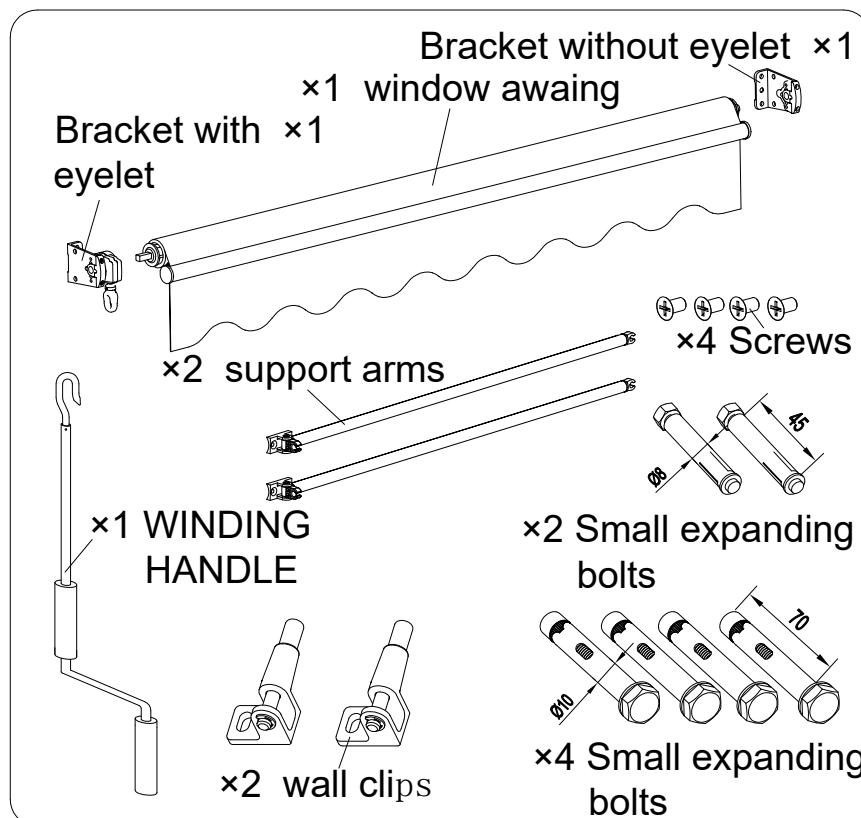
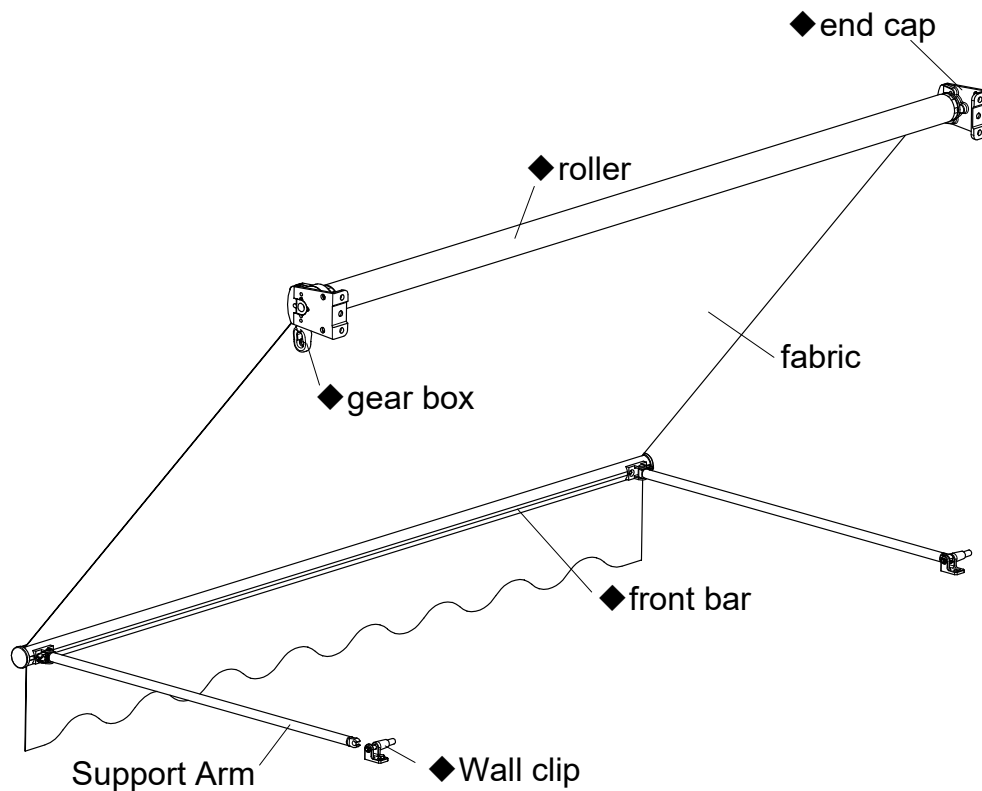
1.5m Window Awning Shaftesbury 11006

Instructions for Use

2m Window Awning Shaftesbury 11007

Please read and retain these instructions for future reference

v001: 23/10/17



*Calls cost 7 pence per minute plus your telephone company's network access charge

Head Office, 11 Bridge Street,
Bishop's Stortford CM23 2JU
Tel: 0844 482 4400*
Fax: 01279 756 595
www.coopersofstortford.co.uk

Coopers
OF STORTFORD

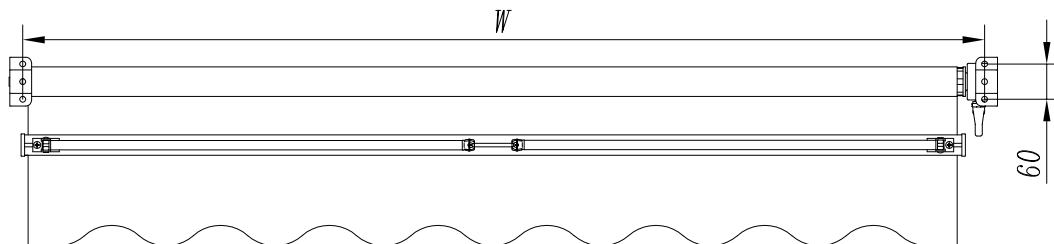
1.5m Window Awning Shaftesbury 11006

Instructions for Use

2m Window Awning Shaftesbury 11007

Please read and retain these instructions for future reference

v001: 23/10/17

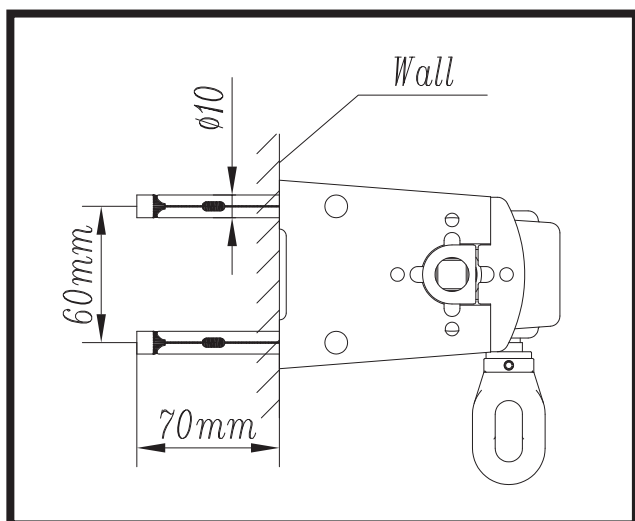


Product model	W
1.5 × 1.5m	1430mm
2 × 1.5m	1930mm

The measurements are taken from the centre of the bracket location holes.

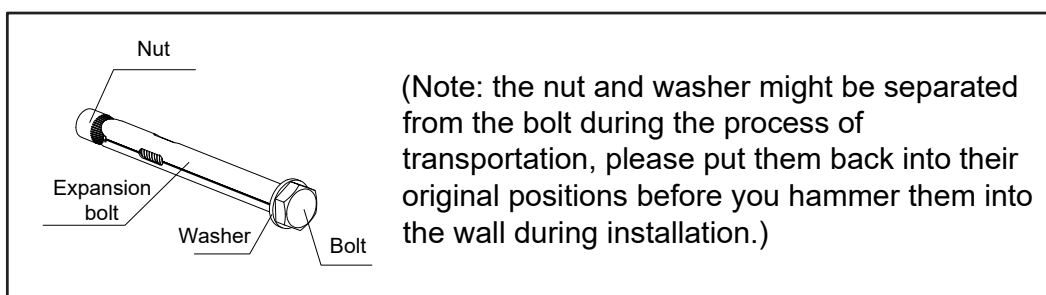
ASSEMBLY INSTRUCTIONS:

Using the size of the awning as a guide position the brackets in the desired location onto the wall taking care to mark the fixing holes in the bracket to the wall with a suitable item.



Step 1:

The brackets need to be a minimum of 5 cm above the window aperture. Using a 10mm masonry bit drill a hole approx. 70mm deep on the marks you have made for the location of the awning. Repeat with the second marked hole. Using the expansion bolts tighten the bracket with the silver hoop (gearbox) to the wall. Repeat for the second bracket.



*Calls cost 7 pence per minute plus your telephone company's network access charge

Head Office, 11 Bridge Street,
Bishop's Stortford CM23 2JU
Tel: 0844 482 4400*
Fax: 01279 756 595
www.coopersofstortford.co.uk

Coopers
OF STORTFORD

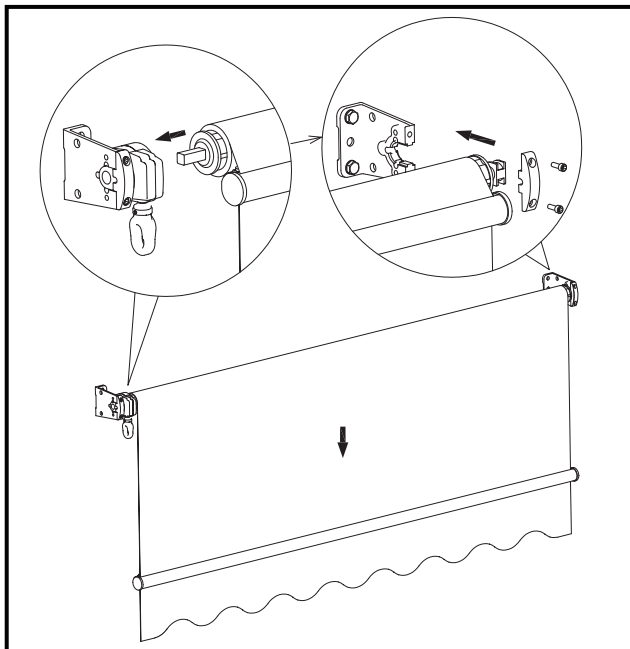
1.5m Window Awning Shaftesbury 11006

Instructions for Use

2m Window Awning Shaftesbury 11007

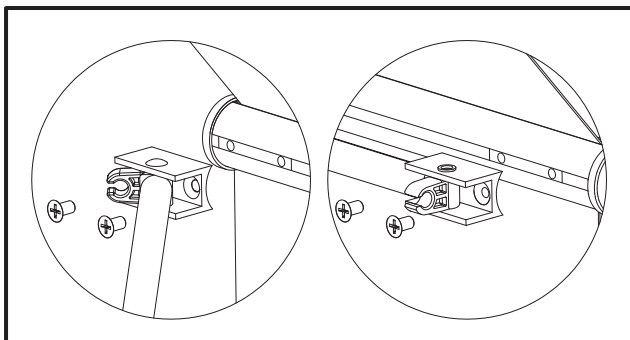
Please read and retain these instructions for future reference

v001: 23/10/17



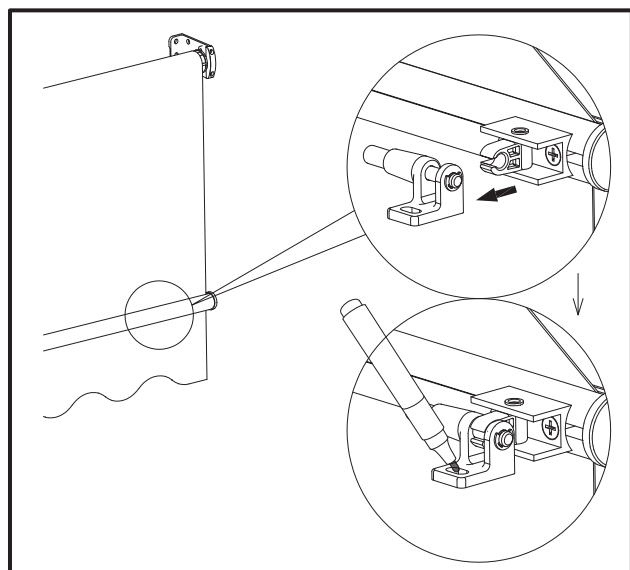
Step 2:

The right hand bracket (non-eyelet) has a covered section to be unscrewed before the awning can slide into location on the bracket. Place the awning into left hand bracket (eyelet). Then slide awning into the uncovered location in the right hand bracket (non-eyelet). Then retighten the cover for the right hand bracket. Unwind the fabric for the next step.



Step 3:

Fix the extending arms into the location points in the front bar using the 2 small screws, one set for each arm.



Step 4:

Let the support arm swing loose from the front bar. Attach the wall clip to the support arms. Unwind the awning to the desired size and position the wall bracket where the support arm holds the awning in the desired spot. The support arms are not likely to be horizontal as shown in the diagrams but at an angle. Mark against the wall where the bracket meets the wall.

Head Office, 11 Bridge Street,
Bishop's Stortford CM23 2JU
Tel: 0844 482 4400*
Fax: 01279 756 595
www.coopersofstortford.co.uk

Coopers
OF STORTFORD

*Calls cost 7 pence per minute plus your telephone company's network access charge

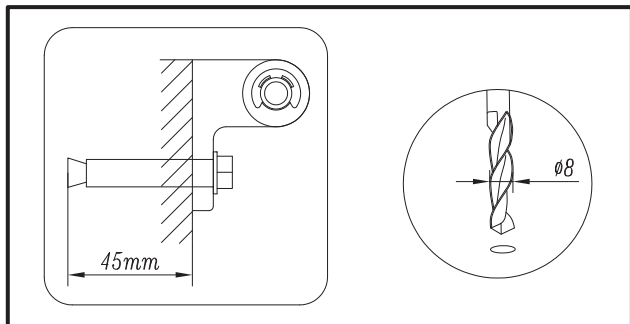
1.5m Window Awning Shaftesbury 11006

Instructions for Use

2m Window Awning Shaftesbury 11007

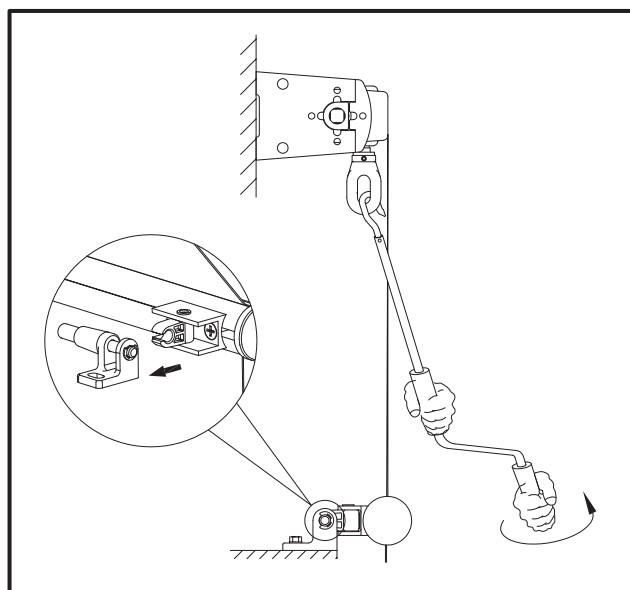
Please read and retain these instructions for future reference

v001: 23/10/17



Step 5:

To fix the wall clips to the wall drill an 8mm hole and tighten into place using the smaller expanding bolts.

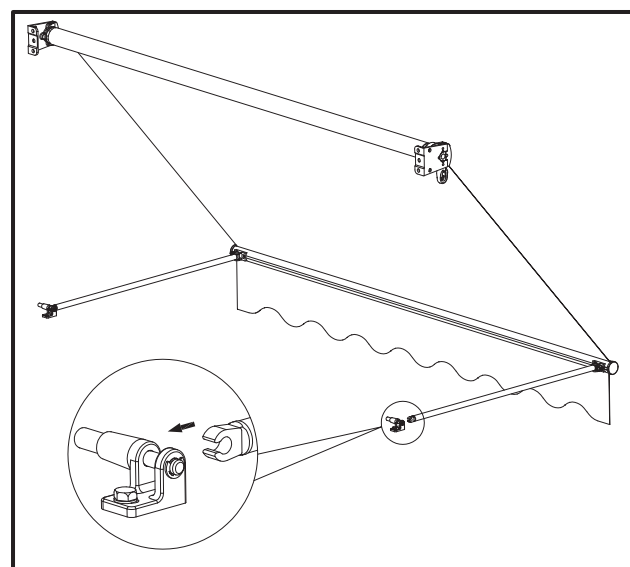


Step 6:

To extend the awning attach the winding handle to the winding ring loop and turn clockwise until fully open.

To retract the awnings turn the handle anti-clockwise.

The winding handle can be removed when the awning is not in use.



To retract the awning, wind the fabric to the closed position.

The arms will then move towards the wall and rest in position until lowered again by unwinding the awning to its desired height.

*Calls cost 7 pence per minute plus your telephone company's network access charge

Head Office, 11 Bridge Street,
Bishop's Stortford CM23 2JU
Tel: 0844 482 4400*
Fax: 01279 756 595
www.coopersofstortford.co.uk

Coopers
OF STORTFORD

1.5m Window Awning Shaftesbury 11006

Instructions for Use

2m Window Awning Shaftesbury 11007

Please read and retain these instructions for future reference

v001: 23/10/17

CARE AND CLEANING INSTRUCTIONS:

- Stains and bird droppings should be washed or sponged away using a mild detergent.
- It is recommended that you remove the awning from the wall during the winter months to prolong the life of the awning.
- Keep the plastic protective cover it was delivered in. This will help keep it clean while over wintering.

DISPOSAL

- Dispose of all packaging, paper, cartons, plastic and plastic bags in accordance with your local recycling regulations.
- At the end of the product's lifespan please dispose of it at an authorised household waste recycling centre.

*Calls cost 7 pence per minute plus your telephone company's network access charge

Head Office, 11 Bridge Street,
Bishop's Stortford CM23 2JU
Tel: 0844 482 4400*
Fax: 01279 756 595
www.coopersofstortford.co.uk

Coopers
OF STORTFORD