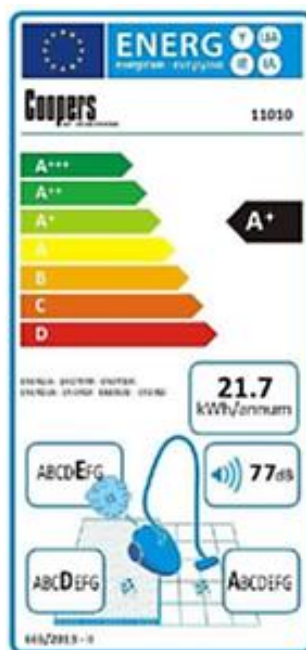
**Power Details:**

Voltage:	220-240V
Frequency:	50/60Hz
Wattage:	600W max
Size:	108cm x24cm x19.3cm
Weight:	1.55kg
Capacity:	0.8l
Noise level:	77db (approx.)

**Features:**

- Removable handle and 2-in-1 design (stick vac/handheld vac)
- Lightweight stick design allows for easy manoeuvring
- Versatility and ability to vacuum awkward spaces
- Works great on hard floors
- Full set accessories to cover variable cleaning needs
- This appliance uses cyclone filter system with bag-less design. The appliance uses a washable filter system. The dust cup is easy to detach and is washable.

**Energy Label:**

Energy Efficiency: A+

Average annual energy consumption: 21.7kWh

Sound power Level: 77dB

Hard floor cleaning Class: A

Dust re-emission Class: E

Carpet cleaning Class: D

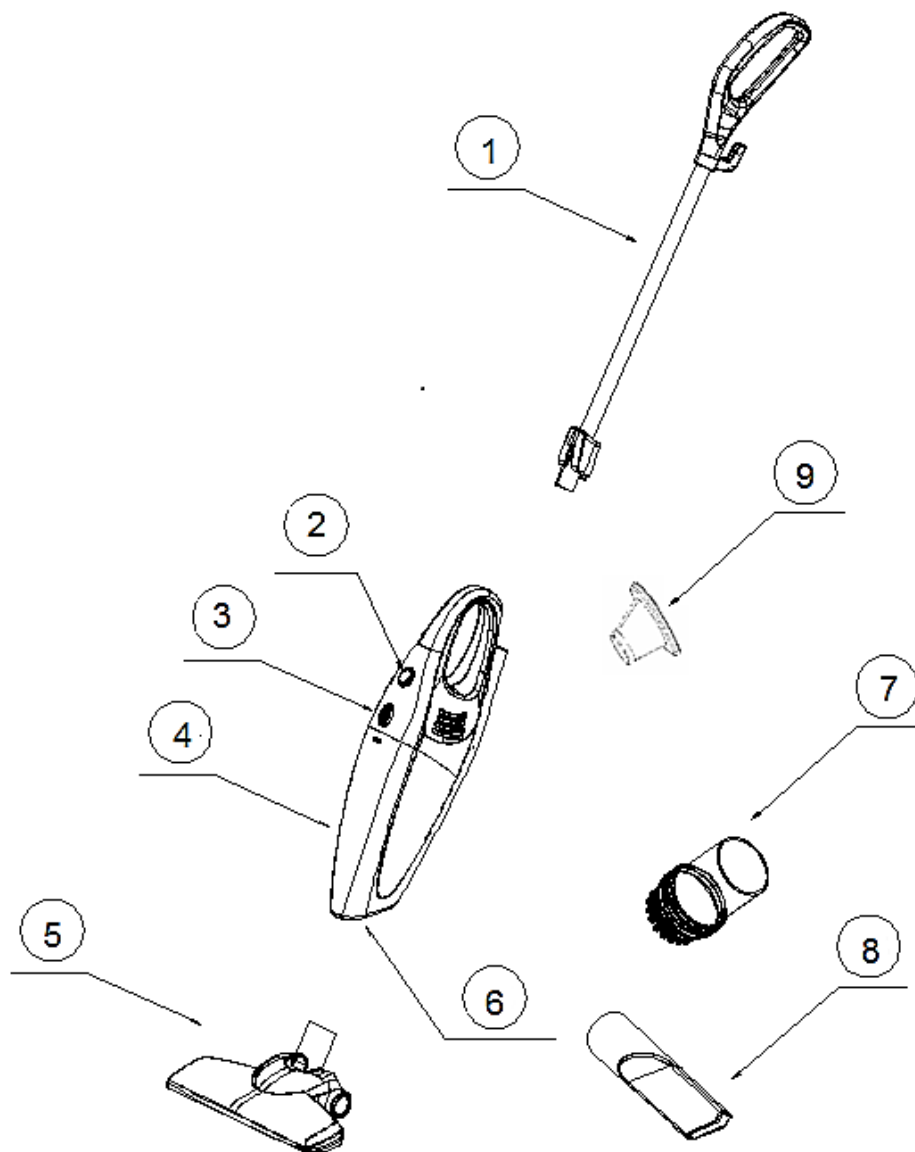
Head Office, 11 Bridge Street,  
Bishop's Stortford CM23 2JU  
Tel: 0844 482 4400\*  
Fax: 01279 756 595  
www.coopersofstortford.co.uk

**Coopers**  
OF STORTFORD

Please read this instruction manual thoroughly before starting and ensure you are familiar with the operation of your new 2in1 vacuum.

**CAUTION:**

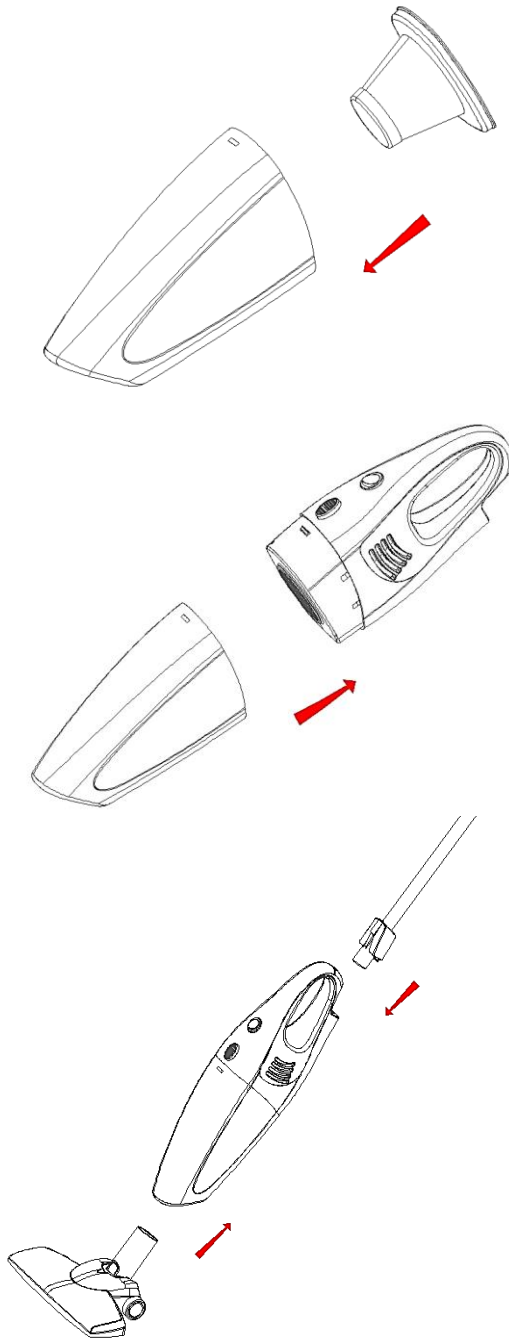
- DO NOT PULL THE APPLIANCE BY THE POWER CABLE.
- DO NOT USE TO VACUUM HOT ASHES.
- DO NOT USE TO VACUUM LIQUIDS.
- DO NOT USE TO VACUUM SHARP OBJECTS.
- ALWAYS CHECK THE DUST CUP FILTER REGULARLY AND EMPTY AND CLEAN WHEN FULL. WE SUGGEST AT LEAST A WEEKLY CHECK.

**PARTS AND ACCESSORIES:**

1. Hand shank
2. Switch
3. Dust hopper button
4. Dust hopper
5. Brush
6. Intake opening
7. Hairbrush
8. Flat suction nozzle
9. Dust Cup

**ASSEMBLY GUIDE:**

Please do not plug into mains during assembly.



1. Insert dust cup into dust hopper.

2. Connect top and bottom parts of dust hopper.

3. Insert hand shank into top of dust hopper and brush into bottom of dust hopper for using appliance in upright position.  
For handheld use attach either hairbrush or flat suction nozzle.

**TO EMPTY THE DUST CUP FILTER:**

- Follow above instructions in reverse order.
- Carefully remove the dust filter over a suitable receptacle. (Remember which way the filter fits.)
- Shake dust filter and front housing to empty.
- Rinse the front housing and dust filter in cold water and allow to dry naturally.
- Reassemble when dry.

**TROUBLESHOOTING:**

Not enough suction	<ol style="list-style-type: none"> <li>1. Filter system blocked</li> <li>2. Parts connection</li> </ol>	<ol style="list-style-type: none"> <li>1. Clean dust cup</li> <li>2. Re-assemble parts ensuring connections are tight</li> </ol>
--------------------	---------------------------------------------------------------------------------------------------------	----------------------------------------------------------------------------------------------------------------------------------

**WARNINGS AND SAFETY INSTRUCTIONS:**

WHEN USING ELECTRICAL APPLIANCES, BASIC SAFETY PRECAUTIONS SHOULD ALWAYS BE FOLLOWED:

- READ ALL INSTRUCTIONS BEFORE USE.
- FOR DOMESTIC INDOOR USE ONLY.
- DO NOT USE OUTDOORS OR FOR COMMERCIAL USE.
- BEFORE USE, CHECK THOROUGHLY FOR ANY DEFECTS AND DO NOT USE IF DEFECTS ARE FOUND. TAKE CARE NOT TO DROP THE APPLIANCE AS HEAVY IMPACTS MAY CAUSE INTERNAL DAMAGE.
- BEFORE CONNECTING THE APPLIANCE, CHECK IF THE VOLTAGE INDICATED ON THE BOTTOM OF THE APPLIANCE IS IN ACCORDANCE WITH THE MAINS VOLTAGE IN YOUR HOME.
- CHECK THE APPLIANCE AND POWER CABLE CAREFULLY FOR DAMAGE BEFORE EACH USE.
- THIS APPLIANCE CAN BE USED BY CHILDREN AGED FROM 8 YEARS AND ABOVE AND PERSONS WITH REDUCED PHYSICAL, SENSORY OR MENTAL CAPABILITIES OR LACK OF EXPERIENCE AND KNOWLEDGE IF THEY HAVE BEEN GIVEN SUPERVISION OR INSTRUCTION CONCERNING USE OF THE APPLIANCE IN A SAFE WAY AND UNDERSTAND THE HAZARDS INVOLVED. CHILDREN SHALL NOT PLAY WITH THE APPLIANCE. CLEANING AND USER MAINTENANCE SHALL NOT BE MADE BY CHILDREN WITHOUT SUPERVISION.
- CHILDREN OF LESS THAN 3 YEARS SHOULD BE KEPT AWAY UNLESS CONTINUOUSLY SUPERVISED.
- **SOME PARTS OF THIS PRODUCT CAN BECOME VERY HOT AND CAUSE BURNS. PARTICULAR ATTENTION HAS TO BE GIVEN WHERE CHILDREN AND VULNERABLE PEOPLE ARE PRESENT.**
- THE USE OF ANY ACCESSORY ATTACHMENTS NOT RECOMMENDED BY COOPERS OF STORTFORD MAY CAUSE INJURIES AND INVALIDATE ANY WARRANTY YOU MAY HAVE.
- DO NOT COVER THE ITEM IN ANY WAY WHEN IN USE AS THIS MAY CAUSE OVERHEATING.
- DO NOT USE THIS APPLIANCE FOR ANY OTHER USE THAN THE INTENDED USE IT IS DESIGNED FOR.
- TO PROTECT AGAINST ELECTRIC SHOCK, DO NOT IMMERSE POWER CABLE, PLUG OR APPLIANCE, IN WATER OR ANY OTHER LIQUID.
- UNPLUG FROM OUTLET WHEN NOT IN USE AND BEFORE CLEANING.
- DO NOT OPERATE ANY APPLIANCE WITH A DAMAGED POWER CABLE OR PLUG OR AFTER THE APPLIANCE MALFUNCTIONS, OR HAS BEEN DAMAGED IN ANY MANNER. WE RECOMMEND THAT THE POWER CABLE IS NOT KINKED OR STORED IN A TWISTED MANNER, AND THAT YOU REGULARLY CHECK ITS CONDITION.
- ANY REPAIRS MUST BE CONDUCTED BY A QUALIFIED ELECTRICIAN OR ELECTRICAL SERVICE AGENT.

**PLUG WIRING (UK & IRELAND)**

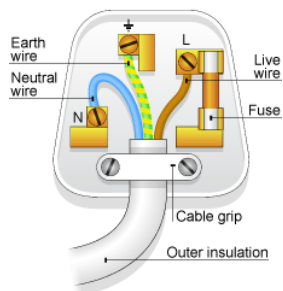
This appliance is fitted with a BS 1363 13-amp plug. If you have to replace the fuse, only those that are ASTA or BSI approved to BS1362 and with a rated current of 13-amps should be used. If there is a fuse cover fitted, this cover must be re-fitted after changing the fuse. If the fuse cover is lost or damaged the plug must not be used. Spare fuse holders and fuses are available from electrical outlets. If the socket outlets in your home or office are not suitable for this product's plug, the plug must be removed and disposed of safely. Attempts to insert the plug into the wrong socket is likely to cause electric hazard. A replacement plug should be wired according to the following instructions:

**The cable**

A mains electricity cable contains two or three inner wires. Each has a core of copper and an outer layer of flexible plastic. This product is double insulated; the wires in the plug are colour coded in the following way:

BLUE	NEUTRAL
BROWN	LIVE
GREEN & YELLOW	EARTH

The diagram below shows the key features of a correctly wired three-pin mains plug.

**Note:**

Double insulated appliances do not need the green & yellow Earth wire. They may only have the Brown and Blue wires.

**CARE AND CLEANING INSTRUCTIONS**

- Always switch off and unplug before cleaning.
- Do NOT immerse in water. Risk of electric shock.
- Do NOT use abrasive cleaners or sharp utensils to clean this appliance.
- Wipe surfaces with a soft dry cloth.
- Allow to dry thoroughly before further use.
- Store the appliance in a cool, dry place.

**DISPOSAL**

- Dispose of all packaging, paper, cartons, plastic and plastic bags in accordance with your local recycling regulations.
- At the end of the product's lifespan please dispose of it at an authorised household WEEE waste recycling centre.

