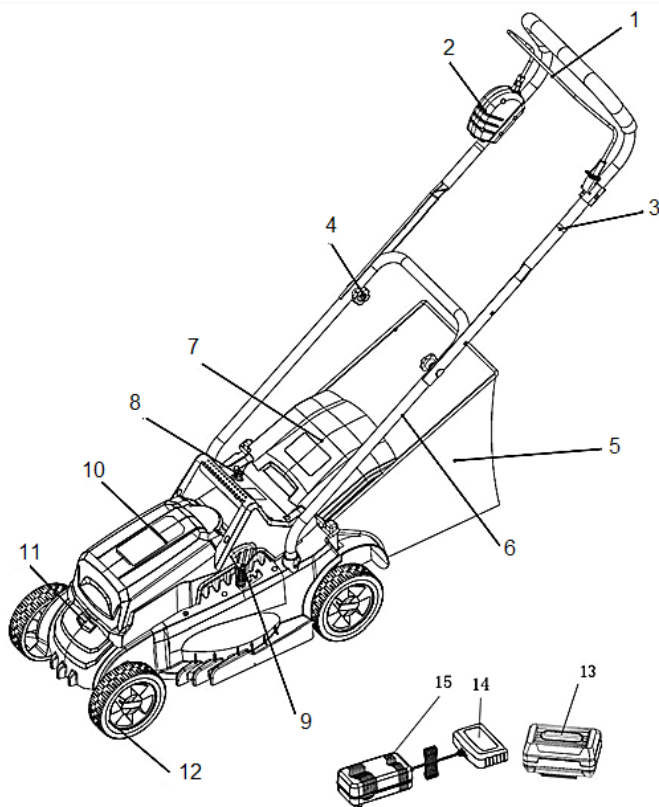


Battery pack	2000mAh
Battery type:	40V Lithium-Ion
Charger time:	Approx. 3hours
No-load speed:	3700/min
Height adjustments:	30mm-65mm
Upper handle adjustments:	4 positions
Cutting Length: (working width)	320mm
Unit weight (without battery):	11Kg
Allowable charging temperature range:	0-50°C
Volume of grass catcher	25L

IMPORTANT: Read and understand this manual before assembling or operating this appliance. Improper use of this appliance can cause severe injury.

Description



Parts List:

1. Bail lever
2. Safety Lock-out button
3. Upper handle
4. Locking knobs
5. Grass catcher box
6. Grass box
7. Rear cover
8. Key
9. Height adjustment handle
10. Battery door
11. Battery door button
12. Wheels
13. Battery
14. Charger
15. LED light

Warning:

The vibration emission during actual use of the power tool can differ from the declared total value depending on the ways in which the tool is used.

There is the need to identify safety measures to protect the operator that are based on an estimation of exposure in the actual conditions of use (taking account of all parts of the operating cycle such as the times when the tool is switched off and when it is running idle in addition to the trigger time).

**Residual risks**

Even when the tool is used as prescribed it is not possible to eliminate all residual risk factors. The following hazards may arise in connection with the tool's construction and design:

- 1) Damage to lungs if an effective dust mask is not worn.
- 2) Damage to hearing if effective hearing protection is not worn.

Health defects resulting from vibration emission if the power tool is being used over longer period of time or not adequately managed and properly maintained.

WARNING! This machine produces an electromagnetic field during operation. This field may under some circumstances interfere with active or passive medical implants.

To reduce the risk of serious or fatal injury, we recommend persons with medical implants to consult their physician and the medical implant manufacturer before operating this machine.

Summary

Description.....	1
Assembly.....	2
Operation:.....	4
CHARGING THE BATTERY:.....	6
Blade Maintenance:.....	7
Troubleshooting:	8
After Usage/Storage:	9
SAFETY INSTRUCTIONS:	10
Explanation of symbols on the machine:	12
CARE AND CLEANING INSTRUCTIONS:	13
MAINTENANCE:	13

Assembly**For Your Safety**

- Warning! Switch off, remove the safety switch and the battery before adjusting, cleaning or if cable is cut, damaged or entangled.
- The blades continue to rotate for a few seconds after the machine is switched off.
- Caution –do not touch the rotating blade.

Unpacking: Carefully remove the mower and any accessories from the box. Make sure that all items listed in the packing list are included.

- Inspect the product carefully to make sure no breakage or damage occurred during shipping.

Head Office, 11 Bridge Street,
Bishop's Stortford CM23 2JU

Tel: 0844 482 4400*

Fax: 01279 756 595

www.coopersofstortford.co.uk

Coopers
OF STORTFORD

*Calls cost 7 pence per minute plus your
telephone company's network access charge

- Do not discard the packing material until you have carefully inspected and satisfactorily operated the product.

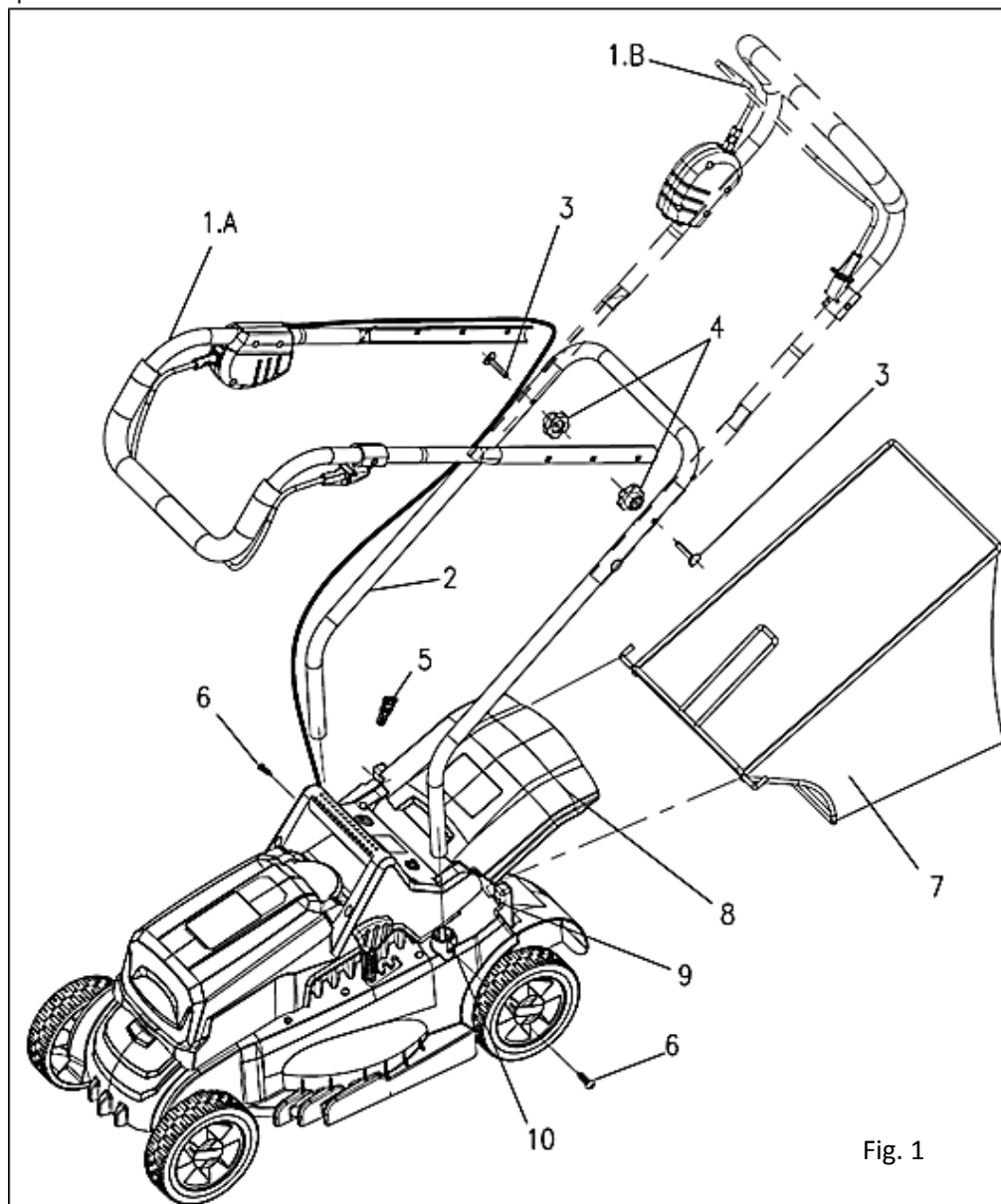


Fig. 1

Mower assembly

- Insert the lower handle (**Fig.1 No.2**) into the position hole (**Fig.1 No.10**) towards the main part. Make sure that the lower handle is in place .
- Insert screw B(**Fig.1 No.6**) into the screw hole, then tighten the screw firmly. Make sure that connection is tight.
- Turn the upper handle(**Fig.1 No.1**) from position A to position B, make sure that the square hole in the upper handle is aligned with the round hole in the lower handle. There are 3 square holes in the upper handle , depending on the required height choose a suitable one to install.
- Insert screw A(**Fig.1 No.3**) into the screw hole, then tighten the locking knob (**Fig.1 No.4**) . Make sure that the connection is tight.
- Raise the rear cover into position, then put the grass catcher bag (**Fig.1 No.7**) on the mower body. Ensure that the hook in the grass catcher bag sits on the position pole (**Fig.1 No.9**).

Installing the battery:

1. Press the battery door button (**Fig.2 No.1**),
2. Lift and hold up the battery door (**Fig.2 No.2**),
3. Place the battery (**Fig.2 No.3**) in the mower. Align guided ribs on battery with grooves in the mower's battery port.
4. Close the door.

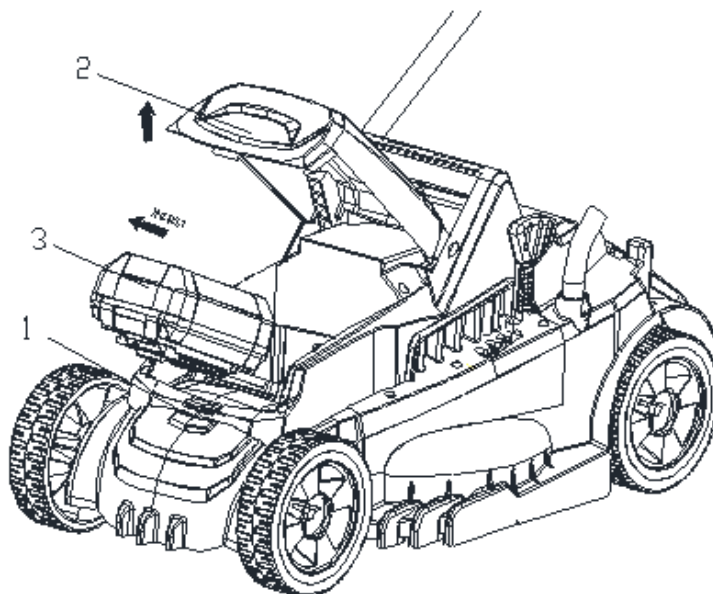


Fig. 2

Removing battery:

1. Release the power lever to stop the mower.
2. Remove the key.
3. Press the Battery door button.
6. Lift and hold up the battery door.
5. Remove battery from the mower.

Operation:

- Do not rapidly switch off and on.

To start the motor

- Insert the key (**Fig.1 No.5**) into the slot.
- Press and hold the safety lock-out button (1). (**See Fig. 3**)
- Pull the bail lever (2) upward to the handle to start the mower and release the button.

Stopping

- Release the bail lever as shown in Fig. 3.
- The blade continues to rotate for a few seconds after the machine is switched off. Allow the motor/blade to stop rotating before switching "on" again.

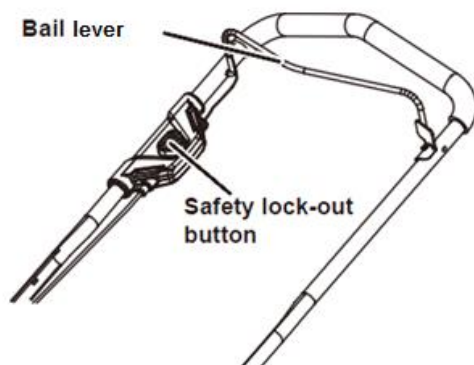


Fig. 3

Cutting height adjustment:

When supplied, the wheels on the mower are set to a low position. Before using the mower for the first time, raise the cutting position to the height best suited for your lawn. The height can be adjusted from 30mm to 65mm. To adjust the blade height:

- **To raise** the blade height, grasp the adjust handle (**Fig.4 No.1**), pull in direction A, then grasp the handle (**Fig.4 No.4**) with one hand, **lift** the handle in direction D to suitable position, then release the adjust handle.
- **To lower** the blade height, grasp the adjust handle (**Fig.4, No. 1**), pull in direction A, then grasp the handle (**Fig.4, no. 4**) with one hand. **Press** the handle in direction D to suitable position, then release the adjust handle.

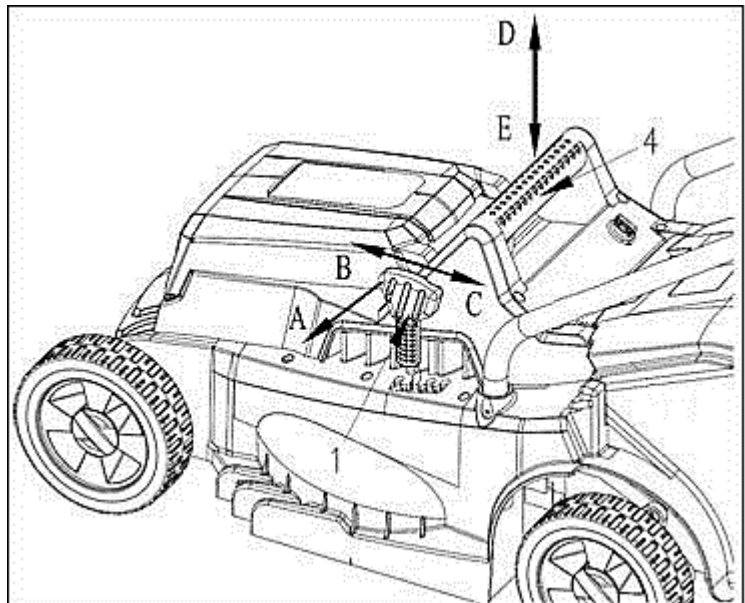


Fig. 4

Over current protection:

The Mower is equipped with a “Over current protection” device. It is activated when the blade jams, clogs or the motor is overloaded and reached its maximum current value. The machine will stop when this happens.

To start the mower again, please remove all obstacles, and wait about 3 minutes , then press the red button of the circuit breaker (**Fig.4 No.2**). The machine can be start normally.

- **Always wear gardening gloves when handling or working near the sharp blades.**

Emptying the grass catcher (Fig. 5)

- 1) Stop mower, allow blades to completely stop, and remove key.
- 2) Lift the rear cover.
- 3) Lift the grass catcher bag by its handle to remove from mower.
- 4) Empty grass clippings.
- 5) Lift the rear chute cover and reinstall the grass catcher bag as described earlier in the instructions.



Fig. 5

CHARGING THE BATTERY:

The battery needs to be charged before first use and whenever it fails to produce sufficient power to cut grass. After several charge and discharge cycles, the battery will attain full capacity. The battery may become warm while charging; this is normal and does not indicate a problem.

Remove it from the mower and insert it into the charger (14). The battery pack will only fit into the charger in one way. Do not force it. Be sure that battery pack is fully seated in the charger.

Read all of the safety instructions in the battery charger section of this manual before attempting to charge the battery pack for your tool. Always use correct battery pack (pack supplied with tool or replacement pack exactly like it). Never install any other battery pack, it will ruin your tool and may create a hazard.

1. CHARGING PROCEDURE

These chargers require no adjustment and are designed to be as easy as possible to operate. Simply place your battery pack into the receptacle of a plugged in charger and it will automatically charge the pack.

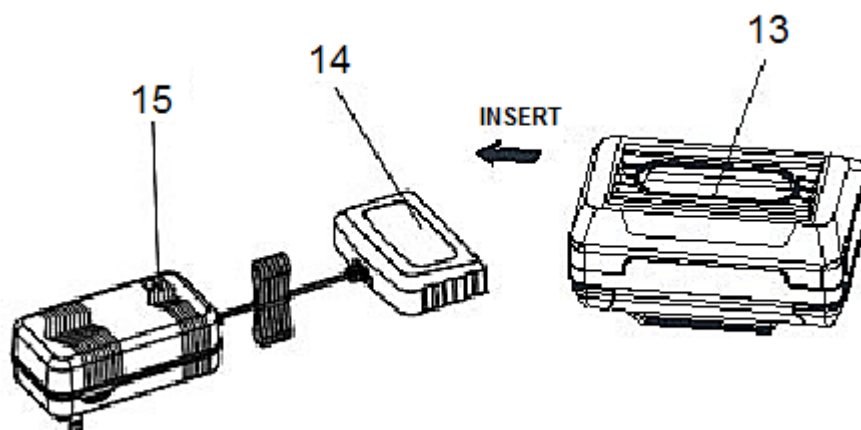


Fig. 6

- 1) Plug the charger into an appropriate AC power outlet. The red indicator (15) lights up to tell you that the charger is ready for use.
- 2) Insert the battery pack (13) into the charger (14), as shown in Fig 6, making sure the pack is fully seated in the charger. The green indicator (15) flashes 1Hz to tell you that the battery pack is on charge.



NOTE! If the red indicator (15) flashes 1Hz means the battery is too hot and it cannot be charged. The battery cannot be charged immediately after using the appliance. Allow the battery pack to cool before charging,

If the red indicator (15) and the green indicator (14) flash together, that means the battery pack is faulty.

(3) The battery pack will be fully charged in about 2 hours. The green indicator (14) stops flashing and stays green to indicate the battery pack is fully charged.

2. IMPORTANT CHARGING NOTES.

Longest life and best performance can be obtained if the battery pack is charged when the air temperature is between 18-24°C. Do not charge the battery pack in a very low or very high air temperature. This is important and will prevent serious damage to the battery pack.

(1) When using your tool continuously, the batteries in your battery pack will become hot. You should let a hot battery pack cool down for approximately 30 minutes before attempting to recharge.

(2) The charger and battery pack may become warm to the touch while charging. This is a normal condition, and does not indicate a problem.

(3) Use the charger in normal room temperatures whenever possible. To prevent overheating, do not cover the charger and do not charge battery packs in direct sunlight or near heat sources.

(4) If the battery pack does not charge properly

- Check current at receptacle by plugging in a lamp or other appliance.
- Move charger and battery pack to a location where the surrounding air temperature is approximately 18-24°C.
- If charging problems persist, take or send the tool, battery pack and charger to your local service centre.

(5) The battery pack should be recharged when it fails to produce sufficient power. DO NOT CONTINUE to use under these conditions. Follow the charging procedure. You may also charge a partially used pack whenever you need with no adverse effect on the battery pack.

(6) Under certain conditions, with the charger plugged in to the power supply, the exposed charging contacts inside the charger can be shorted by foreign material. Foreign materials of a conductive nature such as, but not limited to, steel wool, aluminium foil, or any build-up of metallic particles which should be kept away from charger cavities. Always unplug the charger from the power supply when there is no battery pack in the cavity. Unplug charger before attempting to clean it.

(7) Do not immerse charger in water or any other liquid.

(8) WARNING! Don't allow any liquid to get inside charger. Electric shock may result. To facilitate the cooling of the battery pack after use, avoid placing the charger or battery pack in a warm environment.

(9) CAUTION! Never attempt to open the battery pack for any reason. If the plastic housing of the battery pack breaks or cracks. Please recycle; do not put it into further use.

Blade Maintenance:

- **Warning! Switch "off", remove the key, battery and grass catcher box before adjusting or cleaning.**
- **Always wear gardening gloves when handling or working near the sharp blades.**
- **Do not lubricate blade or blade bolt during refitting.**

Turn the machine on its right side and inspect the blade; if blunt or damaged, replace.

Head Office, 11 Bridge Street,
Bishop's Stortford CM23 2JU

Tel: 0844 482 4400*

Fax: 01279 756 595

www.coopersofstortford.co.uk

Coopers
OF STORTFORD

*Calls cost 7 pence per minute plus your
telephone company's network access charge

Use the following procedure to remove and re-place the blade:

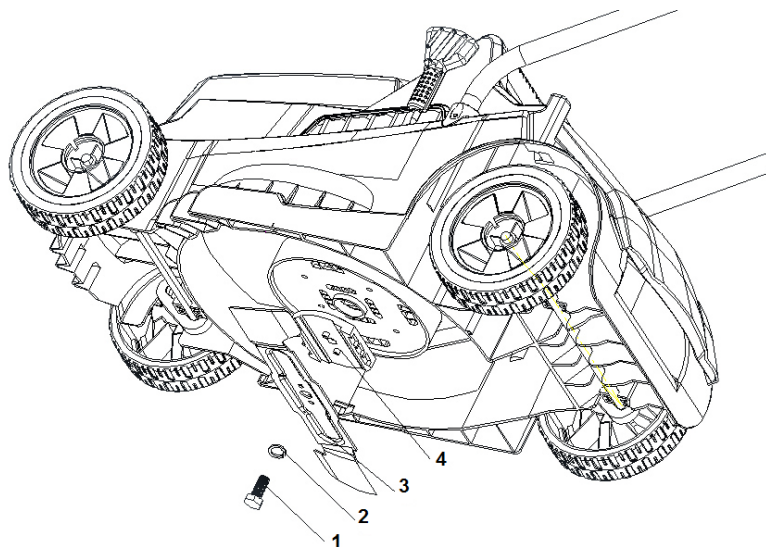


Fig. 7

- 1) While wearing strong padded gloves, wedge a block of wood between the blade and the mower deck in order to prevent the blade from turning when the nut is being removed.
- 2) Using a 19 mm wrench or socket, loosen the blade nut (**Fig.7 No.1**) and remove the blade (**Fig.7 No.3**). Turn the nut "COUNTER-CLOCKWISE" to loosen it and "CLOCKWISE" to tighten it.
- 3) Remove the blade nut, the washer (**Fig.7 No.2**), the blade, and blade holder (**Fig.7 No.4**).
- 4) To re-install the blade, position the blade with the cutting edges toward the ground. Assemble the holder, the blade, the washer, and the nut as shown. Using a 19 mm socket or wrench, turn the blade nut "CLOCKWISE" in order to secure the blade.

Troubleshooting:

The following chart lists problem symptoms, possible causes and corrective action, if your machine does not operate properly. If these do not identify and correct the problem, contact your service agent.

- Warning! Switch off and remove the key before investigating any fault

Problem	Possible Cause	Corrective Action
The machine does not work	Possible clogging	Check underneath the machine and clear obstruction (always wear gardening gloves)
	Battery not fully charged	Charge battery
	Battery not inserted (properly)	Insert the battery
	Grass too long	Increase height of cut and tilt machine to reduce starting load
	Safety switch damage	Contact Service Agent
	Over current protection has activated	Allow motor to cool /increase height of cut
	Battery too hot/cold	Allow to cool/warm
	Safety switch key not inserted correctly/fully	Fit correctly

Machine start, immediately stop	Battery not fully charged	Charge battery
	Key not inserted correctly/fully	Fit correctly
	Battery not inserted (properly)	Insert battery
Machine functions intermittently	Internal wiring of machine damaged	Contact Service Agent
	Battery not fully charged	Charge battery
Machine leaves ragged finish and/ Motor obstructed	Height of cut too low	Increase height of cut(see "Adjusting the Cutting Height")
	Cutting blade dull	Replace the blade(see "Blade Maintenance")
	Possible clogging	Check underneath the machine and clear out as necessary (always wear gardening gloves)
	Blade fitted upside down	Refit blade correctly(see "Blade Maintenance")
Area of cut (battery duration) not large enough	Height of cut too low	Increase cut height and walk slower
	Grass too high	Increase cut height and walk slower
	Grass wet or damp	Wait until grass is dry and walk slower
	Grass is dense	Increase cut height , walk slower and cut more frequently
	An additional battery can be purchased from an authorized customer service agent for garden products	Contact Service Agent
Cutting blade not rotating while machine switched on	Cutting blade obstructed	Switch off machine clear obstruction (always wear gardening gloves)
	Blade nut/bolt loose	Tighten blade nut/bolts
Excessive vibrations/noise	Blade nut/bolt loose	Tighten blade nut/bolts
	Cutting blade damaged	Contact Service Agent replace the blade
No charging procedure possible	Battery contacts contaminated	Clean the battery contacts (e.g. by inserting and removing the battery several times) or replace the battery (Batteries can be purchased to service agents)
	The battery is defective, due to a disconnection in the battery	Replace the battery (Batteries can be purchased to service agents)
Charger plug into the AC power access, the Power LED is not lit	Mains plug of battery charger not plugged in (properly)	Insert mains plug (fully) into the socket outlet
	Socket outlet, mains cable or battery charger defective	Check power supply voltage, if necessary, a battery charger, an authorized inspection station contact customer service

After Usage/Storage: Cleaning the mower

In order to reduce the risk of electric shock, do not expose the mower to water. The underside of the mower deck should be cleaned after each use, because grass clippings, leaves, dirt, and other debris will accumulate, which will cause rust and corrosion.

Remove any build-up of grass and leaves on or around the motor cover (do not use water). Occasionally wipe the mower clean with a dry cloth. If debris builds up on the underside of the mower during use, stop the motor, disconnect it from the battery, and then tilt the mower forward or on its side, and scrape it clean using an appropriate tool.

Storing the mower

The following steps should be taken in order to prepare the lawn mower for storage.

- Clean the mower as described in the previous section.
- Inspect the blade, and replace it or sharpen it, if required (refer to the Maintenance section).
- Lubricate the mower (refer to the Maintenance section).
- Store the mower in a dry, clean location. Do not store it next to corrosive materials, such as fertilizer or rock salt.
- Store the mower indoors, in a cool, dry place, out of the reach of children. Do not cover the lawn mower with a solid plastic sheet. Plastic coverings trap moisture around the mower, which causes rust and corrosion.
- Remove the battery and store it in a cool dry location, if possible. Charge the battery every two months when not in use in order to increase its life.
- Remove the key and store in a secure place.

SAFETY INSTRUCTIONS:

Warning! Read these instructions carefully, be familiar with the controls and the proper use of the machine.

Please keep the instructions safe for later use!

Operation

- NEVER ALLOW CHILDREN OR PEOPLE UNFAMILIAR WITH THESE INSTRUCTIONS TO USE THE MACHINE. LOCAL REGULATIONS MAY RESTRICT THE AGE OF THE OPERATOR.
- WHEN NOT IN USE STORE THE MACHINE OUT OF REACH OF CHILDREN.
- THIS APPLIANCE IS NOT INTENDED FOR USE BY PERSONS (INCLUDING CHILDREN) WITH REDUCED PHYSICAL, SENSORY OR MENTAL CAPABILITIES, OR LACK OF EXPERIENCE AND KNOWLEDGE, UNLESS THEY HAVE BEEN GIVEN SUPERVISION OR INSTRUCTION CONCERNING USE OF THE APPLIANCE BY A PERSON RESPONSIBLE FOR THEIR SAFETY. CHILDREN SHOULD BE SUPERVISED TO ENSURE THAT THEY DO NOT PLAY WITH THE APPLIANCE.
- NEVER MOW WHILE PEOPLE, ESPECIALLY CHILDREN OR PETS, ARE NEARBY.
- THE OPERATOR OR USER IS RESPONSIBLE FOR ACCIDENTS OR HAZARDS OCCURRING TO OTHER PEOPLE OR THEIR PROPERTY.
- DO NOT OPERATE THE MACHINE WHEN BAREFOOT OR WEARING OPEN SANDALS, ALWAYS WEAR SUBSTANTIAL FOOTWEAR AND LONG TROUSERS.
- THOROUGHLY INSPECT THE AREA WHERE THE MACHINE IS TO BE USED AND REMOVE ALL STONES, STICKS, WIRES, BONES AND OTHER FOREIGN OBJECTS.
- BEFORE USING, ALWAYS VISUALLY INSPECT TO SEE THAT THE BLADES, BLADE BOLTS AND CUTTER ASSEMBLY ARE NOT WORN OR DAMAGED. REPLACE WORN OR DAMAGED BLADES AND BOLTS IN SETS TO PRESERVE BALANCE.
- MOW ONLY IN DAYLIGHT OR IN GOOD ARTIFICIAL LIGHT.
- AVOID OPERATING THE MACHINE IN WET GRASS, WHERE FEASIBLE.
- ALWAYS WALK, NEVER RUN.
- NEVER OPERATE THE APPLIANCE WITH DEFECTIVE GUARDS, OR WITHOUT SAFETY DEVICES, FOR EXAMPLE DEFLECTORS AND/OR GRASS CATCHERS, IN PLACE.

- WORKING ON BANKS CAN BE DANGEROUS.
- DO NOT MOW ON EXCESSIVELY STEEP SLOPES.
- ALWAYS BE SURE OF YOUR FOOTING ON SLOPES OR WET GRASS.
- MOW ACROSS THE FACE OF SLOPES, NEVER UP AND DOWN.
- EXERCISE EXTREME CAUTION WHEN CHANGING DIRECTION ON SLOPES.
- USE EXTREME CAUTION WHEN STEPPING BACK OR PULLING THE MACHINE TOWARDS YOU.
- NEVER MOW BY PULLING THE MOWER TOWARDS YOU.
- STOP THE BLADES IF THE MACHINE HAS TO BE TILTED FOR TRANSPORTATION WHEN CROSSING SURFACES OTHER THAN GRASS AND WHEN TRANSPORTING THE MACHINE TO AND FROM THE AREA TO BE MOWED.
- SWITCH ON THE MOTOR ACCORDING TO INSTRUCTIONS AND WITH FEET WELL AWAY FROM THE BLADE(S).
- DO NOT TILT THE MACHINE WHEN STARTING OR SWITCHING ON THE MOTOR, EXCEPT IF THE MACHINE HAS TO BE TILTED FOR STARTING IN LONG GRASS. IN THIS CASE, DO NOT TILT IF MORE THAN ABSOLUTELY NECESSARY AND TILT ONLY THE PART WHICH IS AWAY FROM THE OPERATOR. ALWAYS ENSURE THAT BOTH HANDS ARE IN THE OPERATING POSITION BEFORE RETURNING THE MACHINE TO THE GROUND.
- SWITCH ON THE MOTOR ACCORDING TO THE INSTRUCTIONS WITH FEET WELL AWAY FROM ROTATING PARTS.
- DO NOT PUT HANDS OR FEET NEAR OR UNDER ROTATING PARTS. KEEP CLEAR OF THE DISCHARGE OPENING AT ALL TIMES.
- ALWAYS STAND CLEAR OF THE DISCHARGE ZONE WHEN OPERATING THE MACHINE.
- NEVER PICK UP OR CARRY THE MACHINE WHILE THE MOTOR IS RUNNING.
- REMOVE THE SAFETY SWITCH:
 - WHENEVER YOU LEAVE THE MACHINE;
 - BEFORE CLEARING A BLOCKAGE;
 - BEFORE CHECKING, CLEANING OR WORKING ON THE MACHINE;
 - AFTER STRIKING A FOREIGN OBJECT, INSPECT THE MACHINE FOR DAMAGE AND MAKE REPAIRS AS NECESSARY;
 - IF THE MACHINE STARTS TO VIBRATE ABNORMALLY (CHECK IMMEDIATELY).

Recommendations for Optimal Handling of the battery

- **Ensure the switch is in the off position before inserting battery.** Inserting the battery into machines that have the switch on invites accidents.
- **Keep the battery charger away from rain or moisture.** Penetration of water in the battery charger increases the risk of an electric shock.
- **Recharge only with the charger specified by the manufacturer.** A charger that is suitable for one type of battery may create a risk of fire when used with another battery.
- **Do not charge other batteries.** The battery charger is suitable only for charging lithium ion batteries within the listed voltage range. Otherwise there is danger of fire and explosion.
- **Keep the battery charger clean.** Contamination can lead to danger of an electric shock.
- **Before each use, check the battery charger, cable and plug. If damage is detected, do not use the battery charger. Never open the battery charger yourself. Have repairs performed only by a qualified technician and only using original spare parts.** Damaged battery chargers, cables and plugs increase the risk of an electric shock.
- **Do not operate the battery charger on easily inflammable surfaces (e.g., paper, textiles, etc.) or surroundings.** The heating of the battery charger during the charging process can pose a fire hazard.
- **Use only batteries intended specifically for the machine.** Use of any other battery may create a risk of injury and fire.

Head Office, 11 Bridge Street,
Bishop's Stortford CM23 2JU

Tel: 0844 482 4400*

Fax: 01279 756 595

www.coopersofstortford.co.uk

Coopers
OF STORTFORD

*Calls cost 7 pence per minute plus your
telephone company's network access charge

- **When battery is not in use, keep it away from other metal objects like paper clips, coins, keys, nails, screws, or other small metal objects that can make a connection from one terminal to another.** Shorting the battery terminals together may cause burns or a fire.
- **Do not open the battery.** Danger of short-circuiting.
- **Protect the battery against heat, e.g., also against continuous sun irradiation and fire.** There is danger of explosion.
- **Do not short-circuit the battery.** There is danger of explosion.
- In case of damage and improper use of the battery, vapours may be emitted. Provide for fresh air. Vapours can irritate the respiratory system.
- Protect the battery against moisture and water.
- Store the battery only within a temperature range between 0°C and 50°C. As an example, do not leave the battery in the car in summer.

Explanation of symbols on the machine:



General hazard safety alert.



Read instruction manual.



Pay attention that bystanders are not injured through foreign objects thrown from the machine.



Keep bystanders a safe distance away from the machine.



Beware of blades severing toes or fingers.



Switch off and remove isolator key before adjusting, cleaning and before leaving the product unattended for any period.



Not applicable.



Wait until all machine components have completely stopped before touching them. The blades continue to rotate after the machine is switched off, a rotating blade can cause injury.



Do not use the machine in the rain or leave it outdoors when it is raining.



Beware electric shock hazard.



Only use the battery charger indoors.

CARE AND CLEANING INSTRUCTIONS:

- Always switch off and unplug before cleaning.
- Do NOT immerse in water. Risk of electric shock.
- Do NOT use abrasive cleaners or sharp utensils to clean this appliance.
- Wipe surfaces with a soft dry cloth.
- Allow to dry thoroughly before further use.
- Store the appliance in a cool, dry place.

MAINTENANCE:

- Keep all nuts, bolts and screws tight to be sure that the machine is in safe working condition.
- Check the grass catcher frequently for wear or deterioration.
- Examine the machine and replace worn or damaged parts for safety.
- Ensure replacement cutting means of the right type are used.
- Ensure that batteries are charged using the correct charger recommended by the manufacturer. Incorrect use may result in electric shock, overheating or leakage of corrosive liquid from the battery.
- Always wear gardening gloves when handling or working near the sharp blades.

BATTERIES:

- Keep batteries away from children and pets.
- Do not mix used and new batteries.
- Install batteries in accordance with its polarity symbols.
- Remove the batteries if left for long periods.
- Never dispose of batteries in a fire.
- Battery disposal, spent or expired batteries must be properly disposed of and recycled in compliance with local regulations. For detailed information, contact your local authority.
- Follow the battery manufacturer's safety, usage, and disposal instructions.

DISPOSAL

- Dispose of all packaging, paper, cartons and plastic and plastic bags in accordance with your local recycling regulations.
- At the end of the product's lifespan please dispose of it at an authorised household WEEE waste recycling centre.

